


College of Arts, Humanities, & Social Sciences
 Dean
Tom Williams 

Associate Dean
Gayle Seymour

Associate Dean
Paige Rose

UCA Public Appearances
Amanda Horton, Director

Oxford American
Sara Lewis, Executive Director

Department of Art and Design

Bryan Massey, Chair

Degree programs:

- ♦ BA, Art – Art Education, Art History, Fine Art
- ♦ BA/BS Interior Design
- ♦ BFA, Studio Art – Ceramics, Graphic Design, Painting, Photography, Printmaking, Sculpture

Organizations/programs:

- ♦ Baum Gallery of Fine Art
- ♦ Black Box Student Gallery

School of Communication

Donna Stephens, Director

Degree programs:

- ♦ BA/BS, Communication
- ♦ BA, Journalism – Broadcast, Online, Print
- ♦ BA, Public Relations
- ♦ BA, Writing, Rhetoric, & Information Design – Technical & Professional Writing, Writing Studies

Organizations/programs:

- ♦ Channel 6
- ♦ *The Echo, The Scroll*
- ♦ UCA Forensics
- ♦ First-Year Writing Program
- ♦ Principles of Communication Program
- ♦ Center for Writing & Communication

Department of Film, Theatre, & Creative Writing

Shauna Meador, Chair

Degree programs:

- ♦ BA, Creative Writing
- ♦ BA, Film
- ♦ BA, Theatre
- ♦ MFA, Creative Writing
- ♦ MFA, Film

Organizations/programs/publications:

- ♦ Arkansas Shakespeare Theatre
- ♦ Arkatext Literary Festival
- ♦ UCA Film Festival
- ♦ *The Vortex, Arkana*

Department of History

Wendy Lucas, Chair

Degree programs:

- ♦ BA/BS, History
- ♦ BA, African/African-American Studies
- ♦ BSE, Social Studies
- ♦ MA, History

Other program:

- ♦ Minors: Asian Studies, Southern & Arkansas Studies
- ♦ History Day Arkansas

School of Language & Literature

Ty Hawkins, Director

Degree programs:

- ♦ BA, English – teacher licensure (option)
- ♦ BA, Linguistics – Language, TESOL, Computer Science, General Linguistics
- ♦ BA, Modern Languages – Chinese, French, Spanish
- ♦ MA, English
- ♦ MA, GC, Spanish (teaching out through Summer 2024)

Other programs/publication:

- ♦ Intensive English Program
- ♦ Minors: German, Latin American & Latino Studies, TESOL
- ♦ Community Language School
- ♦ *Slant: A Journal of Poetry*

Department of Music

Stephen Plate, Chair

Degree programs:

- ♦ BA, Music
- ♦ BM, Music – Composition, Performance, Piano Pedagogy, Jazz & Studio Music
- ♦ BME, Music Education – Vocal, Piano, Instrumental
- ♦ GC, Music (Professional Studies)
- ♦ MM, Music – Performance, Conducting, Theory, Education

Organizations/programs:

- ♦ Community Music Outreach Division
- ♦ Conway Symphony Orchestra
- ♦ UCA Marching Band

Department of Philosophy and Religion

Taine Duncan, Chair

Degree programs:

- ♦ BA/BS, Philosophy
- ♦ BA/BS, Religious Studies

Other programs:

- ♦ Minor: Gender Studies
- ♦ UCA Ethics Bowl Competitive Team

Department of Political Science

Clay Arnold, Chair

Degree programs:

- ♦ BA/BS, Political Science
- ♦ BPA, Public Administration
- ♦ BA, International Studies

Other programs/publication:

- ♦ Minor: Legal Studies
- ♦ Model United Nations
- ♦ *Midsouth Political Science Review*

Department of Sociology, Criminology, and Anthropology

Edward Powers, Chair

Degree programs:

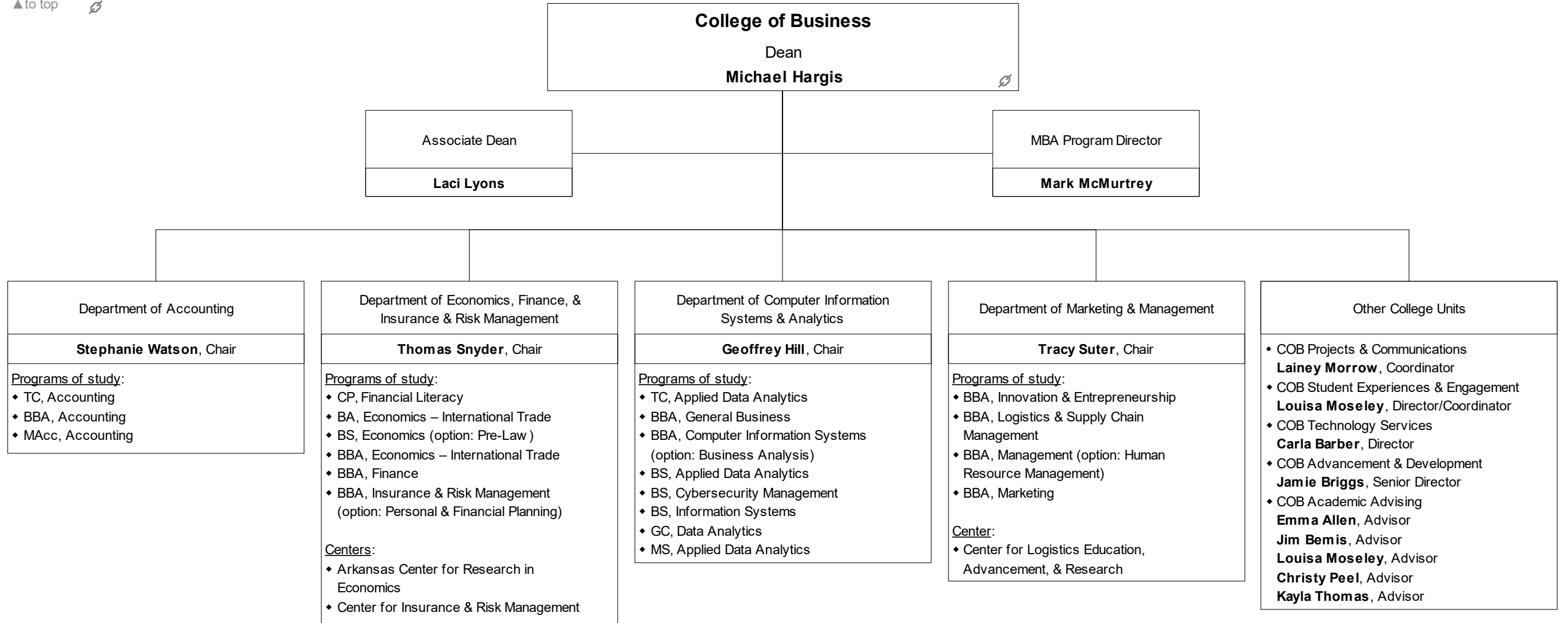
- ♦ BS, Anthropology
- ♦ BS, Criminology
- ♦ BS, Sociology

Organizations/publications:

- ♦ Jamie C. Brandon Center for Archaeological Research
- ♦ *Journal of Undergraduate Research in Anthropology (JURA)*

Other College Programs/Units/Publications

<u>Degree programs:</u>	<u>Center programs:</u>	<u>Publication:</u>
♦ AA, General Education	♦ Asian Studies Development Program Regional Center	♦ Student Journal (online)
♦ BGS, Bachelor of General Studies	♦ Quoined Corner: CAHSS Student Research & Creativity Conference	
	♦ Arts/Humanities/Social Sciences Fair	





College of Education
Dean
Victoria Groves-Scott

Associate Dean
Michael Mills

Department of Elementary, Literacy, & Special Education

Sunny Styles-Foster, Chair (interim)

Programs of study:

- ♦ BSE, Elementary Education
- ♦ BSE, Special Education
- ♦ GC, Dyslexia
- ♦ GC, Integrated Early Childhood Education (B-K)
- ♦ GC, Special Education
- ♦ MSE, Literacy with Dyslexia Endorsement
- ♦ MAT, Special Education
- ♦ MSE, Special Education
- ♦ Special Education Resource Endorsement
- ♦ Special Education Minor (non-licensure)

Centers/Institutes:

- ♦ Child Study Center
- ♦ Mashburn Institute

Department of Leadership Studies

Louis Nadelson, Chair

Programs of study:

- ♦ GC, Computer Science Teaching & Learning
- ♦ GC, Media Design & Development
- ♦ GC, Online Teaching & Learning
- ♦ MS, College Student Personnel Administration
- ♦ MS, Instructional Technology
- ♦ MS, Library Media & Information Technologies
- ♦ MS, School Counseling
- ♦ MS, School Leadership, Management, & Administration
- ♦ PMC, District-Level Administration
- ♦ PMC, Building Administration
- ♦ PMC, Curriculum Administration
- ♦ PMC, Special-Education Program Administration
- ♦ PMC, Gifted & Talented Program Administration
- ♦ EdS, Educational Leadership

Department of Student Transitions

Leslie Gomes, Chair

Academic programming:

- ♦ Corequisite Developmental Courses
- ♦ Academic Success & Personal Development Courses
- ♦ Autism and Neurodiversity Program
- ♦ Upward Bound (TRIO Grant)

Department of Teaching & Learning

Deborah Dailey, Chair

Programs of study:

- ♦ BSE, Middle-Level Education
- ♦ GC, Gifted & Talented Education
- ♦ MAT, Teaching
- ♦ MSE, Advanced Studies in Teacher Leadership
- ♦ EdS, Digital Age Teaching and Learning

Undergraduate Minors:

- ♦ Education for Community Engagement (non-licensure)
- ♦ Teaching and Learning (professional education courses for students in a Secondary Education teacher licensure program)

College-Administered Program

- ♦ PhD, Leadership for Equity & Inclusion
Michael Mills, Program Chair

Other College Services

- ♦ Assessment & Accreditation
Donna Wake, Coordinator
- ♦ Candidate Services
Gary Bunn, Director
- ♦ Technology Learning Center
Ashley Cooksey, Director
- ♦ Academic Advising
Christina Wolfe, Advisor
Aniaya Worth, Advisor

Arkansas Public School Resource Center

Scott Smith, Executive Director

Arkansas Research Center

Greg Holland, Director



College of Health & Behavioral Sciences
Dean
Nancy Reese

Associate Dean
Darshon Reed

Associate Dean for
Interprofessional Education &
Community Engagement
Chad Lairamore

Interprofessional Teaching
Center Manager
Teilena Keathley

Department of Communication Sciences
& Disorders
Dee Lance, Chair
Programs of study:
♦ BS, Communication Sciences and
Disorders
♦ MS, Communication Sciences and
Disorders

Department of Exercise & Sport Science
Kim Eskola, Chair (interim)
Programs of study:
♦ BSE, Physical Education (PETE)
♦ BS, Exercise Science
♦ MS, Athletic Training
♦ MS, Exercise Science
♦ MA, Sport Management

Department of Health Sciences
Denise Demers, Chair
Programs of study:
♦ Pre-Cardiorespiratory Care
♦ Pre-Dental Hygiene
♦ BS, Addiction Studies
♦ BS, Health Promotion
♦ BS, Health Sciences, Health Services
Administration
♦ BS, Medical Laboratory Sciences
♦ BS, Nuclear Medicine Technology
♦ BS, Radiography
♦ MS, Health Promotion

Department of Military Science &
Leadership
LTC Brett Mardis, Chair
Program of study:
♦ Minor in Military Science

School of Nursing
Susan Gatto, Director
Programs of study:
♦ BSN, Pre-Licensure, Nursing
♦ BSN, RN to BSN, Nursing
♦ MSN, Nurse Educator
♦ PMC, Nurse Educator, Family Nurse
Practitioner
♦ DNP, BSN to DNP, Family Nurse
Practitioner
♦ DNP, Post-Master's, Nursing

Department of Nutrition & Family
Sciences
Nina Roofe, Chair
Programs of study:
♦ BSE, Family & Consumer Sciences
♦ BS, Family & Consumer Sciences
♦ BS, Community Nutrition
♦ BS, Dietetics
♦ BS, Nutrition Science
♦ MS, Family and Consumer Sciences
♦ MS, Nutrition, with Dietetics & Nutrition
Therapy track

Department of Occupational Therapy
Tina Mankey, Chair
Program of study:
♦ OTD, Occupational Therapy

Department of Physical Therapy
Kevin Garrison, Chair
Programs of study:
♦ DPT, Physical Therapy
♦ PhD, Physical Therapy
♦ Residency in Pediatric Physical
Therapy

Department of Psychology & Counseling
Art Gillaspy, Chair
Programs of study:
♦ BS, Psychology
♦ MS, Mental Health Counseling
♦ EdS, School Psychology
♦ PhD, Psychology



College of Natural Sciences & Mathematics

Dean

Stephen Addison



Associate Dean

Kari Naylor (interim)

Department of Biology

Brent Hill, Chair

Programs of study:

- ◆ BS, Biology
- ◆ BS, Environmental Science – Biology
- ◆ MS, Biology

Other facilities:

- ◆ Microscope facility
- ◆ Jewel Moore Nature Reserve

Department of Computer Science & Engineering

Emre Celebi, Chair

Programs of study:

- ◆ BS, Computer Engineering
- ◆ BS, Computer Science
- ◆ BS, Cybersecurity
- ◆ BS, Data Science
- ◆ MS, Computer Science

Department of Mathematics

Fred Hickling, Chair (interim)

Programs of study:

- ◆ BS, Mathematics
- ◆ MA, Mathematics Education
- ◆ MS, Applied Mathematics

Department of Physics & Astronomy

Carl Frederickson, Chair

Programs of study:

- ◆ BS, Engineering Physics
- ◆ BS, Physics
- ◆ BS, General Science

Other facilities:

- ◆ Observatory
- ◆ Planetarium

Department of Chemistry & Biochemistry

Kristin Dooley, Chair

Programs of study:

- ◆ BS, Chemistry
- ◆ BS, Environmental Science – Chemistry

Department of Geography

Stephen O'Connell, Chair

Programs of study:

- ◆ BS, Geography
- ◆ BS, Environmental Science – Planning and Administration
- ◆ GC, Geographic Information Systems
- ◆ MGIS, Geographic Information Systems

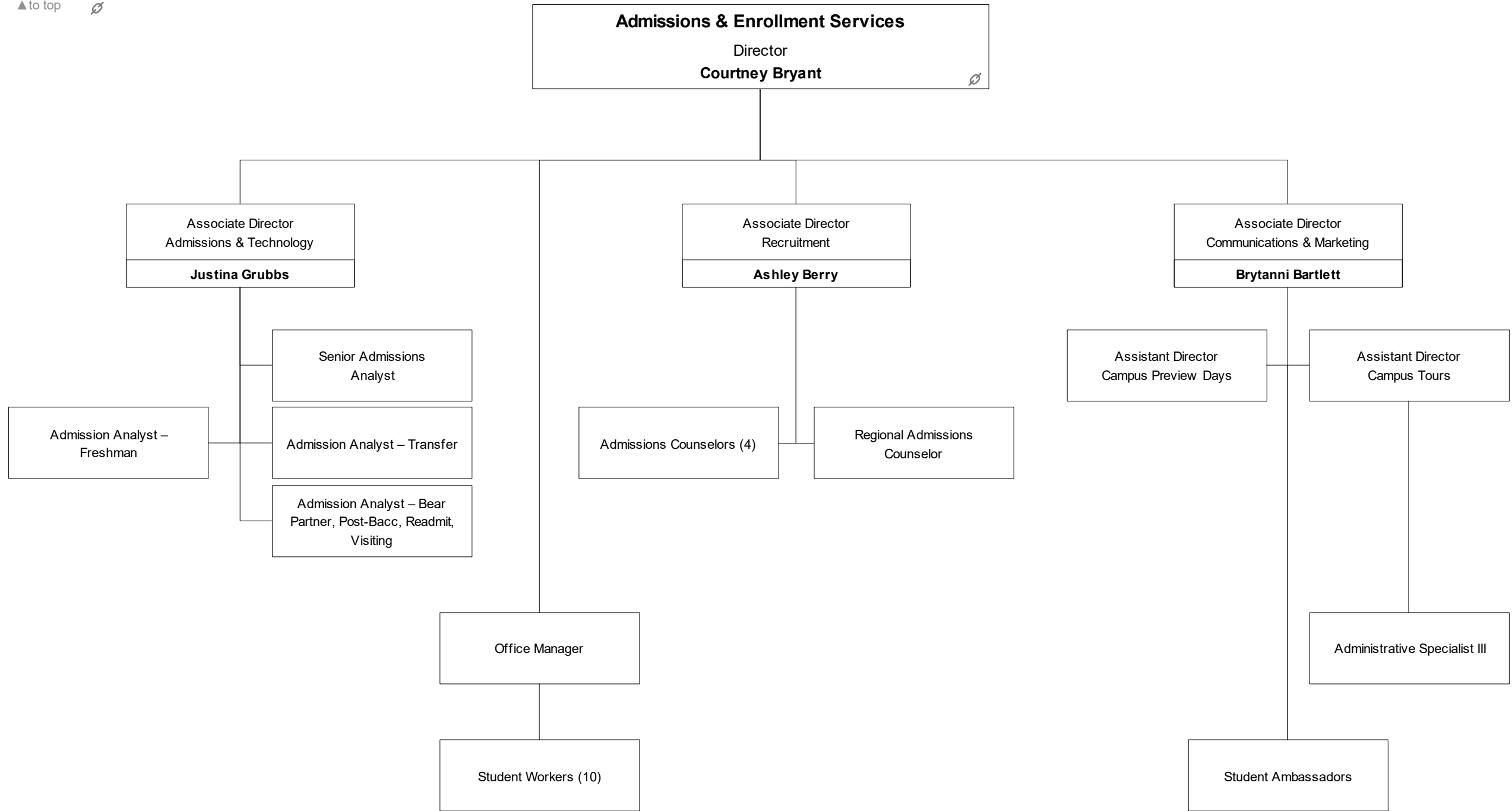
Special Initiatives

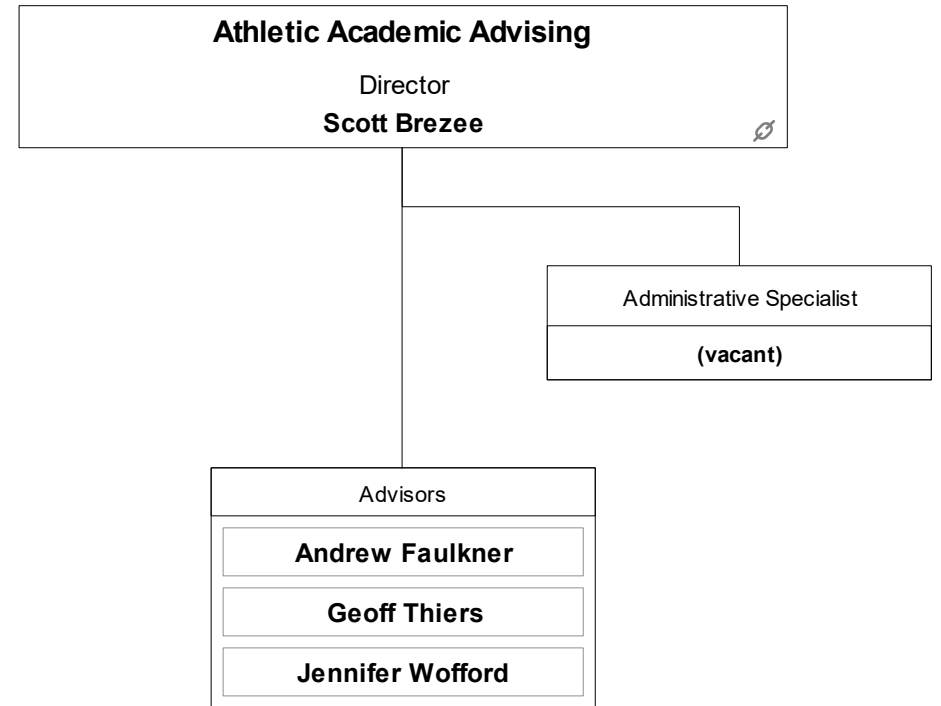
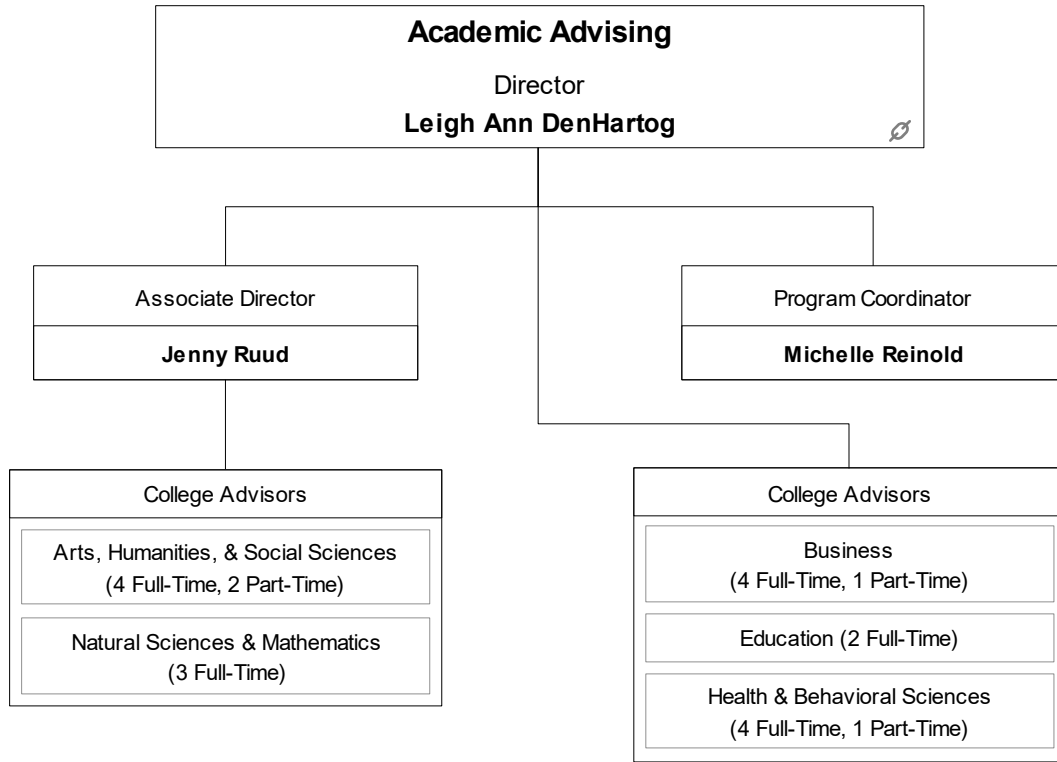
UCA STEM Institute
Lisa Skultety & Todd Abel
Co-Directors

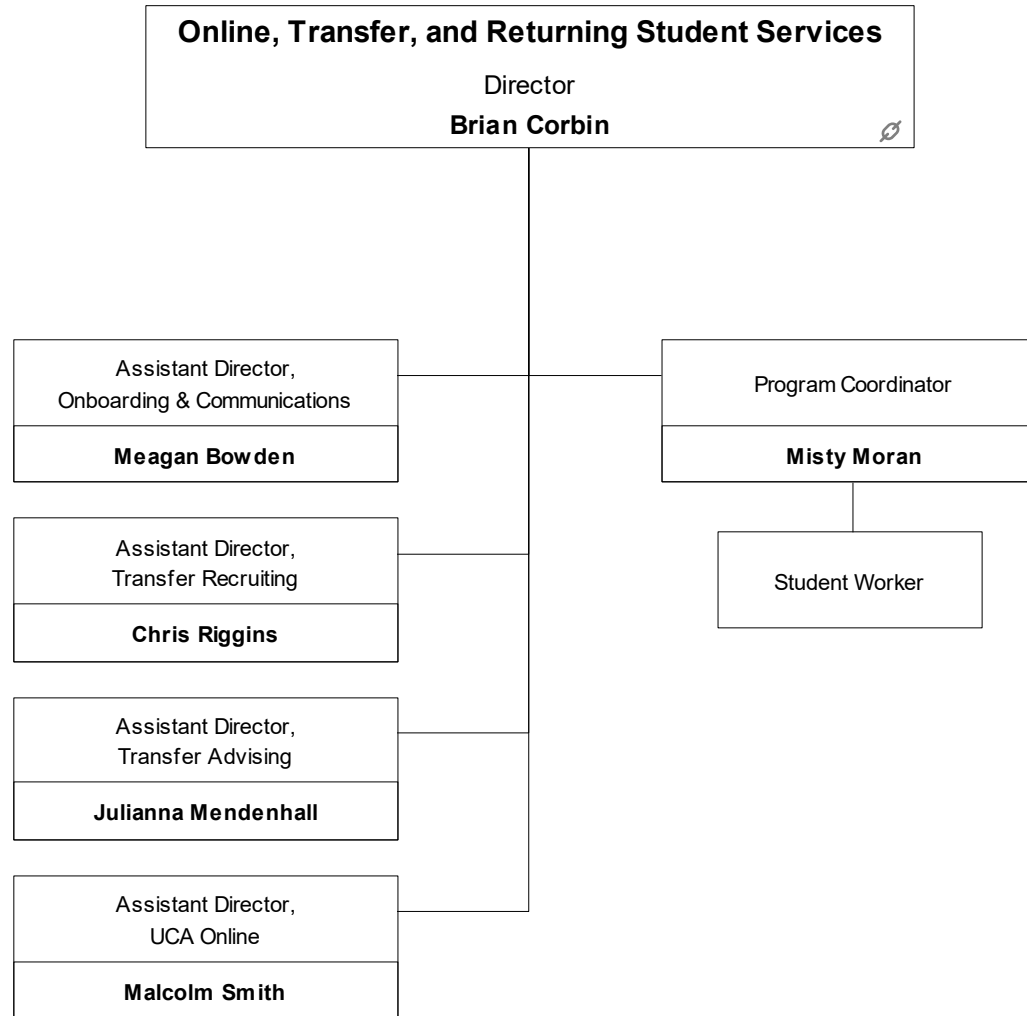


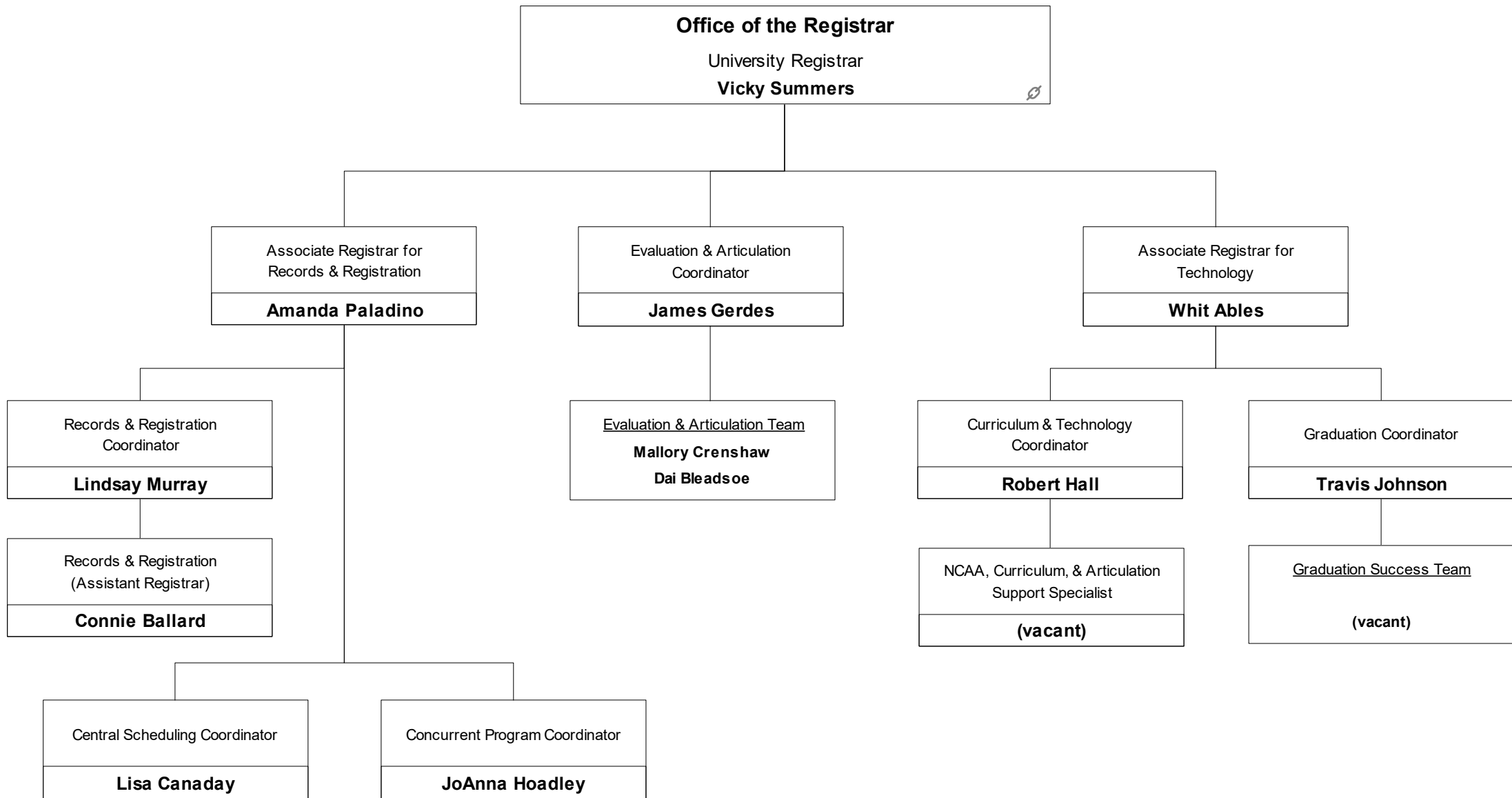
Arkansas Coding Academy
Alison Wish, Director





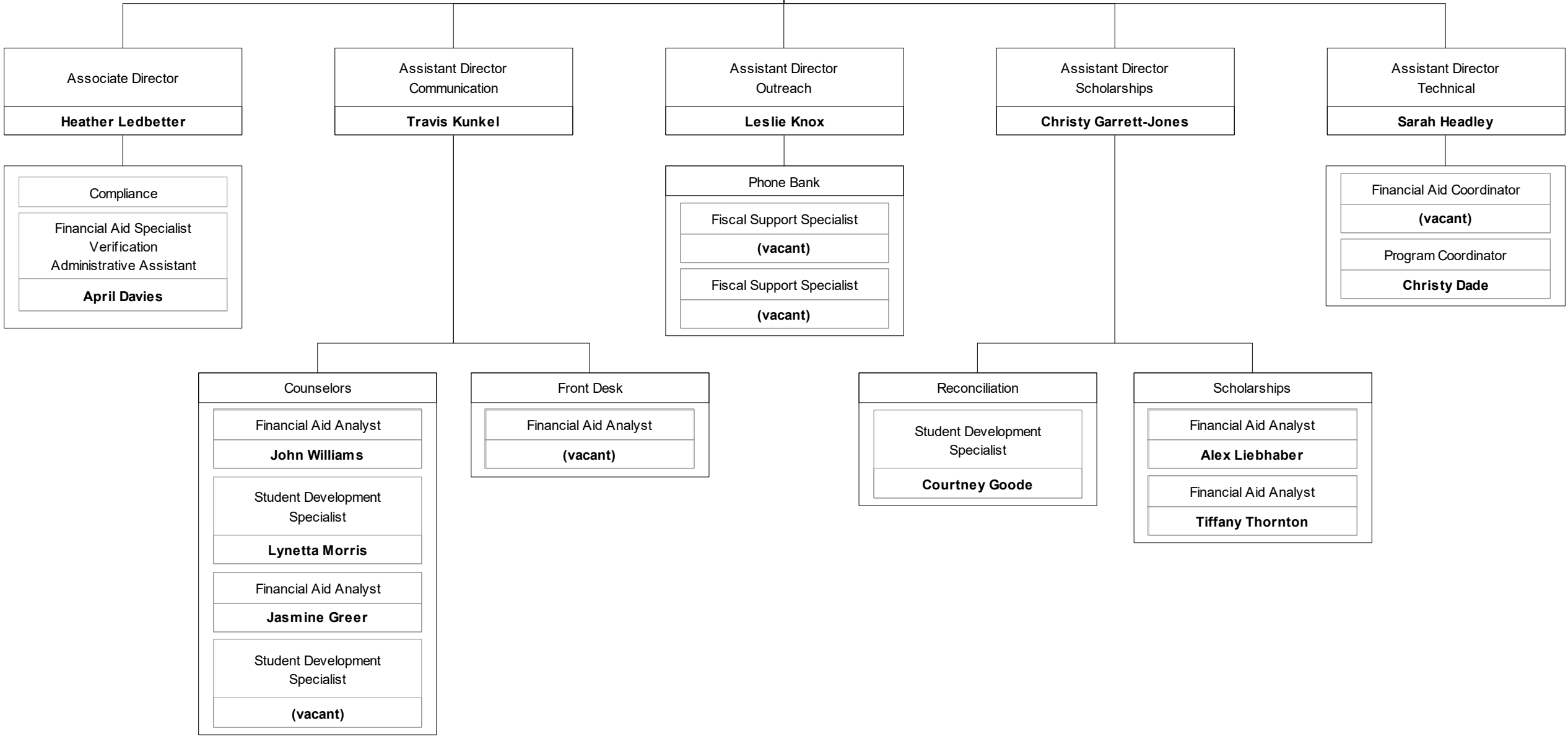


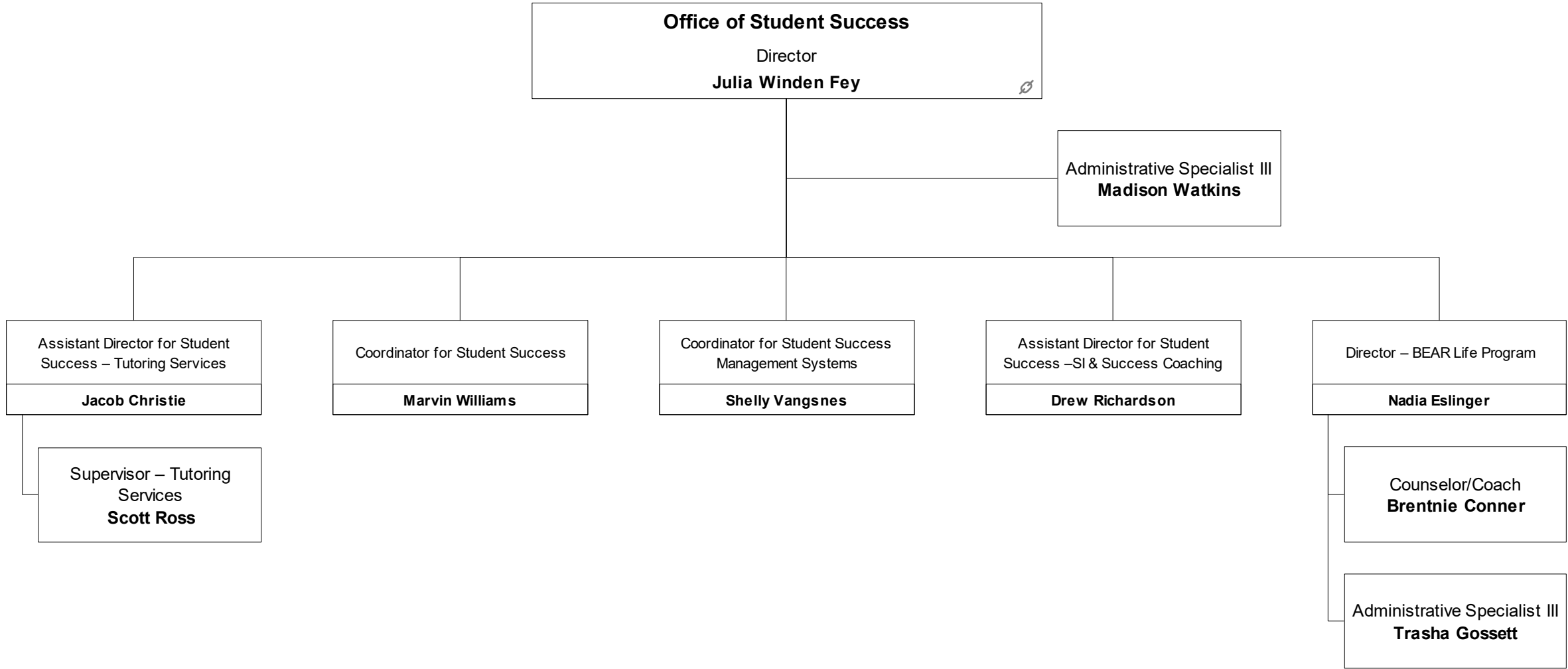


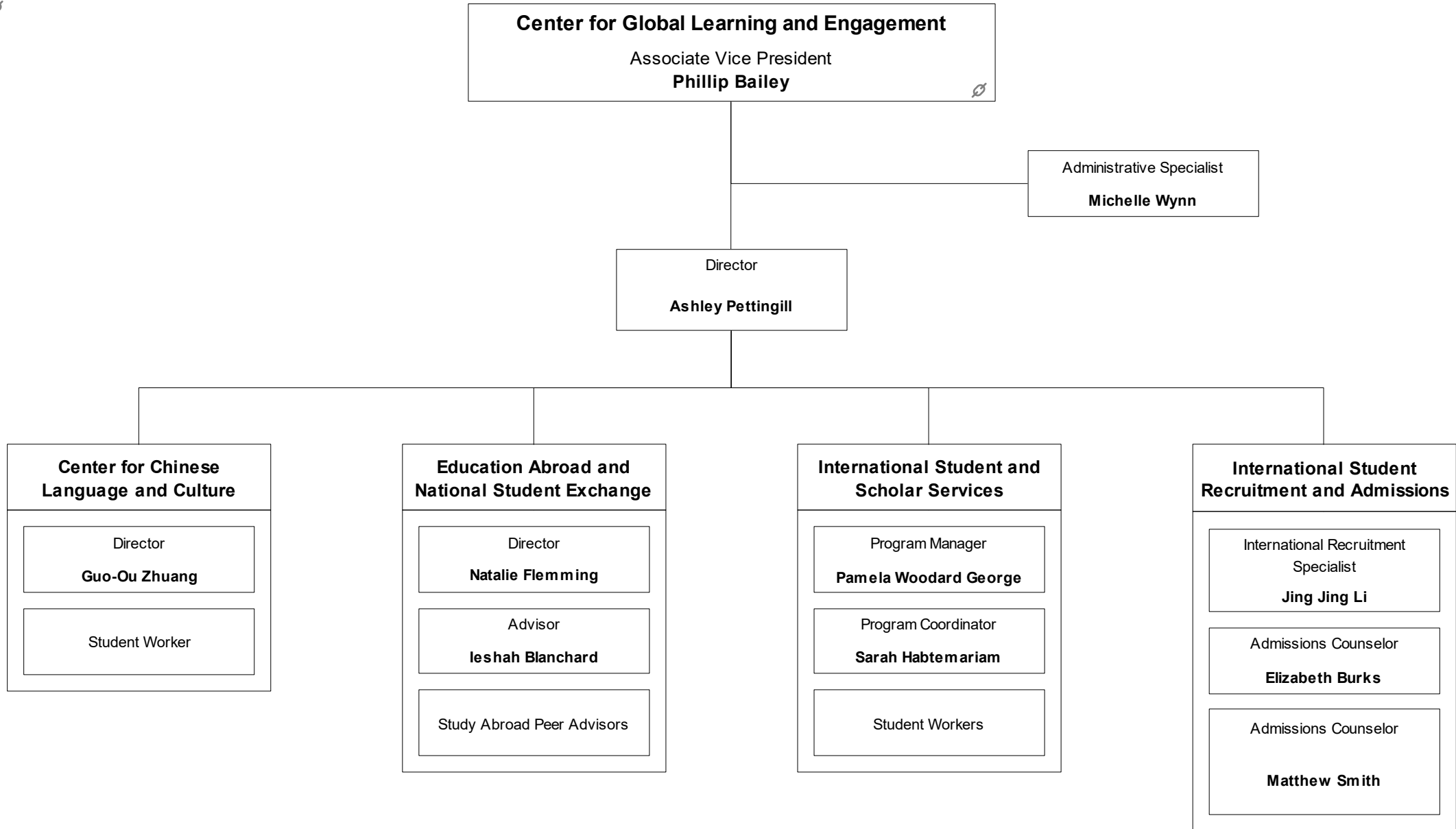


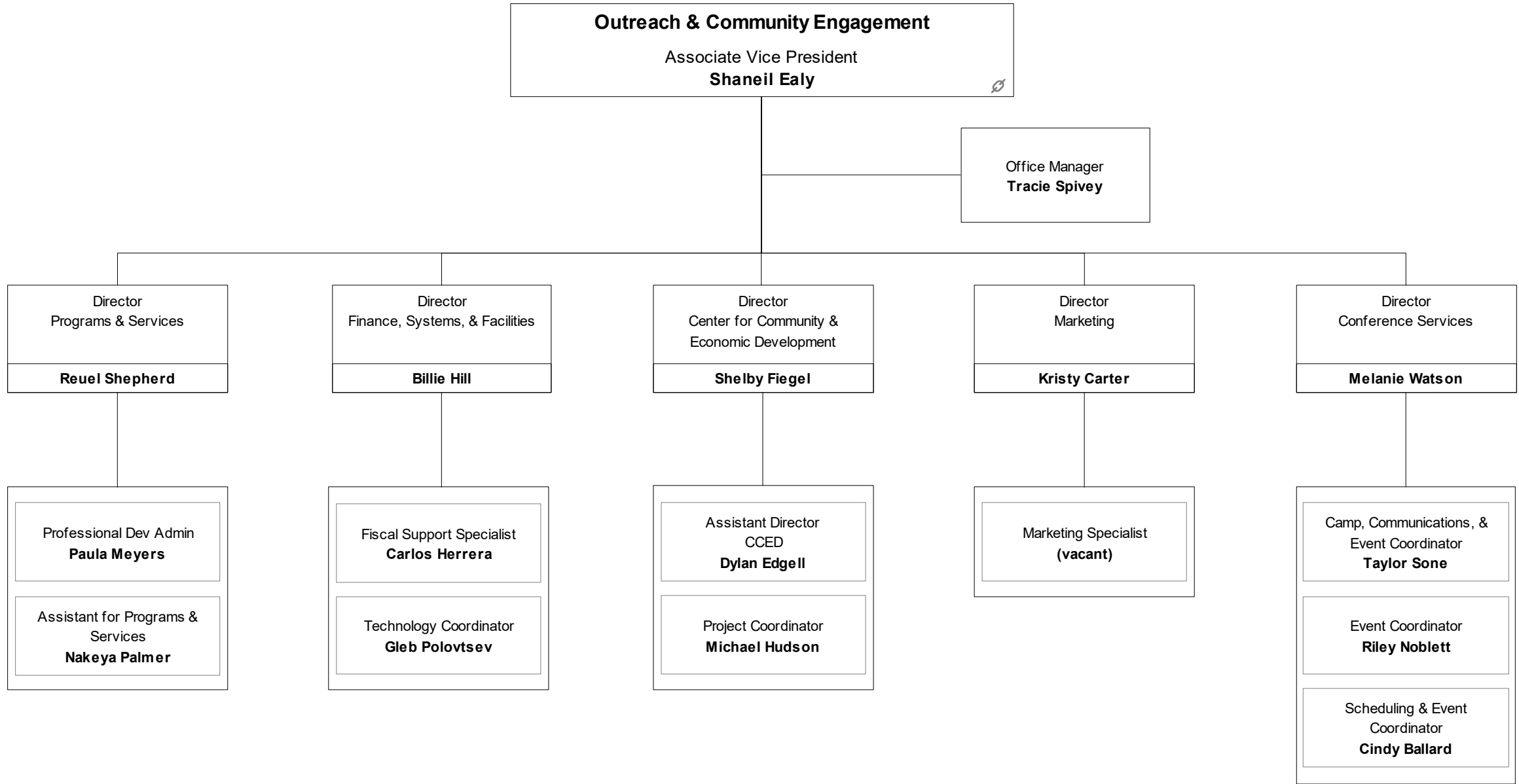


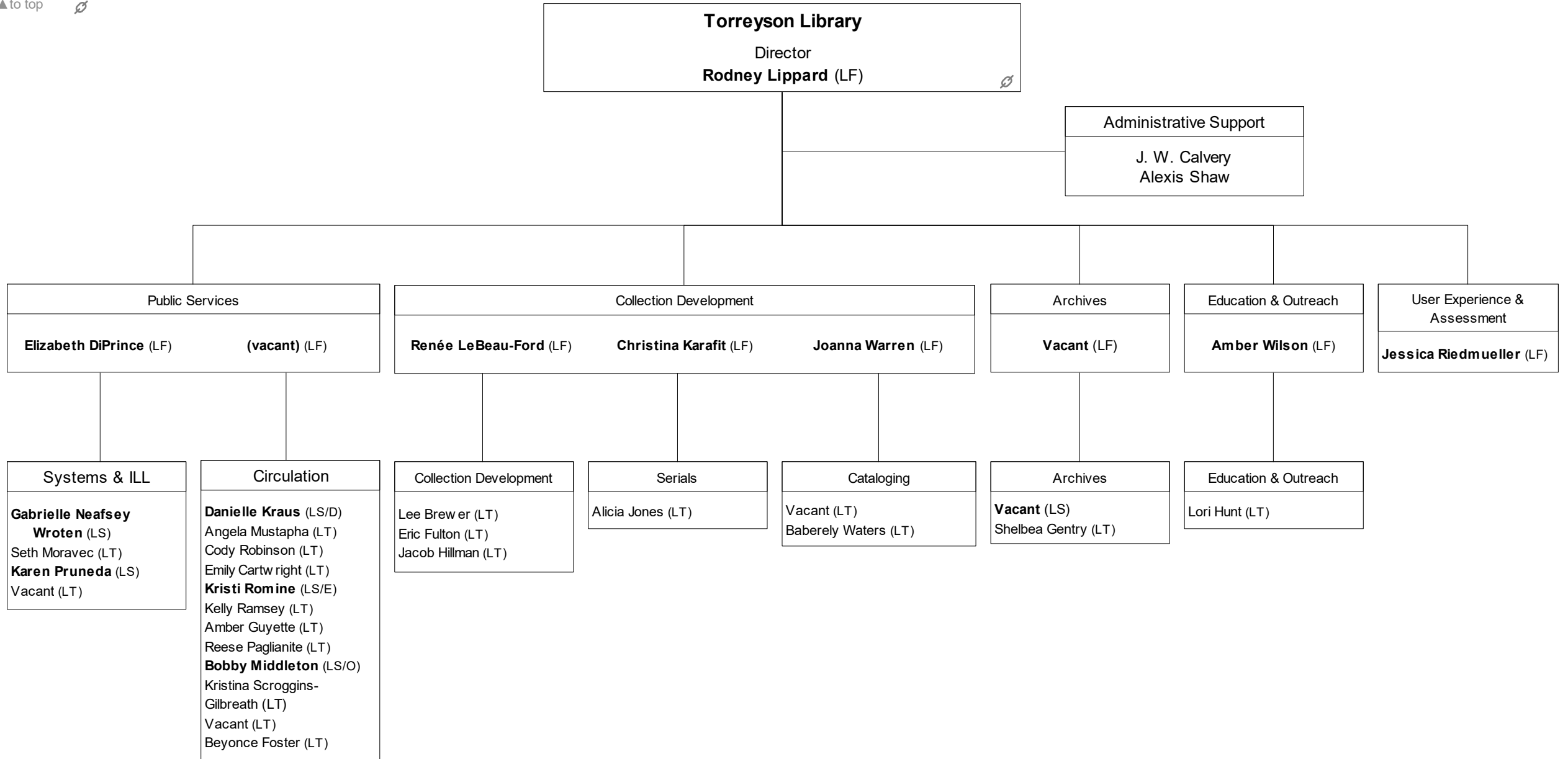
Student Financial Aid
Director
Kimberly Stubbs











Legend:

LF = Library Faculty
 LS = Library Supervisor
 LT = Library Technician

D = Day
 E = Evening
 O = Overnight