

# UCA OT-Level I Fieldwork-OT Process

## COURSES COMPLETED TO DATE

Professional Foundations of Occupational Therapy  
Art and Science of Occupation  
Doctoral Seminar I (Service Learning – lab with occupation course)  
Applied Human Anatomy  
Human Movement and Performance  
Research

## COURSE OBJECTIVES

Upon completion of the course, the student will be able to:

1. Integrate appropriate professional behaviors, confidentiality, and compliance with ethical standards within a practice setting during interactions with clients, families and other professionals.
2. Demonstrate sound judgment in regard to safety of self and others and adhere to safety regulations as appropriate to the setting and scope of practice.
3. Demonstrate clinical reasoning to analyze evaluation, synthesize, diagnose problems, and provide occupation-based interventions related to occupational performance and participation.
4. Demonstrate the ability to use interview and observation to collect data as part of the OT evaluation process and for completing an occupational profile.
5. Document findings of an interview and/or observation with a client with a given diagnosis; specifically, translate findings from the occupational profile into a format consistent with selected documentation procedures
6. Identify occupational needs through effective communication with patients, families, communities, and members of the interprofessional team in a responsive and responsible manner that supports a team approach to the promotion of health and wellness.
7. Develop and implement contextually relevant individual and/or group interventions address psychosocial development and/or behavioral health that affect occupational performance based on data collected.
8. Apply, analyze, and evaluate the interaction of occupation and activity, including areas of occupation, performance skills, performance patterns, context(s) and environments, and client factors.
9. Assess, grade, and modify the way persons, groups, and populations perform occupations and activities by adapting processes, modifying environments, and applying ergonomic principles to reflect the changing needs of the client, sociocultural context, and technological advances.
10. Complete psychological and social analysis of intervention and determine methods for enhancing the use of client-centered occupations within the constraints of the practice environment.
11. Reflect upon the application of the OT process including use of legitimate tools within occupational therapy practice in a variety of settings.

## COURSE DESCRIPTION

Application of professional skills and foundational components of the occupational therapy process with a focus on the social and psychological aspects that influence engagement of occupation within a practice setting.

## OT Doctoral Curriculum Sequence

<https://uca.edu/ot/files/2016/06/OTD-Curriculum-Sequence-with-Course-as-of-4.2.18.pdf>

## Curriculum Course Descriptions

<https://uca.edu/gbulletin/courses/occupational-therapy/>

## EVALUATIONS TO BE SUBMITTED AT END OF FW:

May also be found at: <https://uca.edu/ot/fieldwork-educator/resources-for-fieldwork-educators/>

### Click for: Performance Evaluation

Completed by fieldwork educator – reviewed with student

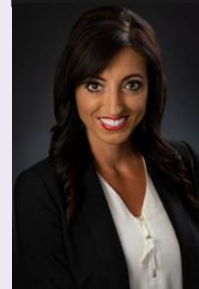
May also be found at: <https://uca.edu/web/forms/view.php?id=1171>

### Click for: Student Review

Completed by student – reviewed with fieldwork educator

May also be found at: <https://uca.edu/web/forms/view.php?id=1172>

## FIELDWORK OFFICE



### Course Instructor Academic Fieldwork Coordinator

Brittany Saviers, MS, OTR/L

bbrown@uca.edu

Office: 501-852-0984

Fax: 501-450-5568

### Interim Fieldwork Assistant

Megan Orton, BS

morton@uca.edu

Office: 501-450-5017

Fax: 501-450-5568

