


# College of Arts, Humanities, & Social Sciences

Dean  
**Tom Williams** 

Associate Dean  
**Gayle Seymour**

Associate Dean  
**Paige Rose**

UCA Public Appearances  
**Amanda Horton**, Director

Oxford American  
**Sara Lewis**, Executive Director

Department of Art and Design  
**Bryan Massey**, Chair

Degree programs:

- ♦ BA, Art – Art Education, Art History, Fine Art
- ♦ BA/BS Interior Design
- ♦ BFA, Studio Art – Ceramics, Graphic Design, Painting, Photography, Printmaking, Sculpture

Organizations/programs:

- ♦ Baum Gallery of Fine Art
- ♦ Black Box Student Gallery

School of Communication  
**Donna Stephens**, Director

Degree programs:

- ♦ BA/BS, Communication
- ♦ BA, Journalism – Broadcast, Online, Print
- ♦ BA, Public Relations
- ♦ BA, Writing, Rhetoric, & Information Design – Technical & Professional Writing, Writing Studies

Organizations/programs:

- ♦ Channel 6
- ♦ *The Echo, The Scroll*
- ♦ UCA Forensics
- ♦ First-Year Writing Program
- ♦ Principles of Communication Program
- ♦ Center for Writing & Communication

Department of Film, Theatre, & Creative Writing  
**Shauna Meador**, Chair

Degree programs:

- ♦ BA, Creative Writing
- ♦ BA, Film
- ♦ BA, Theatre
- ♦ MFA, Creative Writing
- ♦ MFA, Film

Organizations/programs/publications:

- ♦ Arkansas Shakespeare Theatre
- ♦ Arkatext Literary Festival
- ♦ UCA Film Festival
- ♦ *The Vortex, Arkana*

Department of History  
**Wendy Lucas**, Chair

Degree programs:

- ♦ BA/BS, History
- ♦ BA, African/African-American Studies
- ♦ BSE, Social Studies
- ♦ MA, History

Other program:

- ♦ Minors: Asian Studies, Southern & Arkansas Studies
- ♦ History Day Arkansas

School of Language & Literature  
**Ty Hawkins**, Director

Degree programs:

- ♦ BA, English – teacher licensure (option)
- ♦ BA, Linguistics – Language, TESOL, Computer Science, General Linguistics
- ♦ BA, Modern Languages – Chinese, French, Spanish
- ♦ MA, English
- ♦ MA, GC, Spanish (teaching out through Summer 2024)

Other programs/publication:

- ♦ Intensive English Program
- ♦ Minors: German, Latin American & Latino Studies, TESOL
- ♦ Community Language School
- ♦ *Slant: A Journal of Poetry*

Department of Philosophy and Religion  
**Taine Duncan**, Chair

Degree programs:

- ♦ BA/BS, Philosophy
- ♦ BA/BS, Religious Studies

Other programs:

- ♦ Minor: Gender Studies
- ♦ UCA Ethics Bowl Competitive Team

Department of Music  
**Stephen Plate**, Chair

Degree programs:

- ♦ BA, Music
- ♦ BM, Music – Composition, Performance, Piano Pedagogy, Jazz & Studio Music
- ♦ BME, Music Education – Vocal, Piano, Instrumental
- ♦ GC, Music (Professional Studies)
- ♦ MM, Music – Performance, Conducting, Theory, Education

Organizations/programs:

- ♦ Community Music Outreach Division
- ♦ Conway Symphony Orchestra
- ♦ UCA Marching Band

Department of Philosophy and Religion  
**Taine Duncan**, Chair

Degree programs:

- ♦ BA/BS, Philosophy
- ♦ BA/BS, Religious Studies

Other programs:

- ♦ Minor: Gender Studies
- ♦ UCA Ethics Bowl Competitive Team

Department of Political Science  
**Clay Arnold**, Chair

Degree programs:

- ♦ BA/BS, Political Science
- ♦ BPA, Public Administration
- ♦ BA, International Studies

Other programs/publication:

- ♦ Minor: Legal Studies
- ♦ Model United Nations
- ♦ *Midsouth Political Science Review*

Department of Sociology, Criminology, and Anthropology  
**Edward Powers**, Chair

Degree programs:

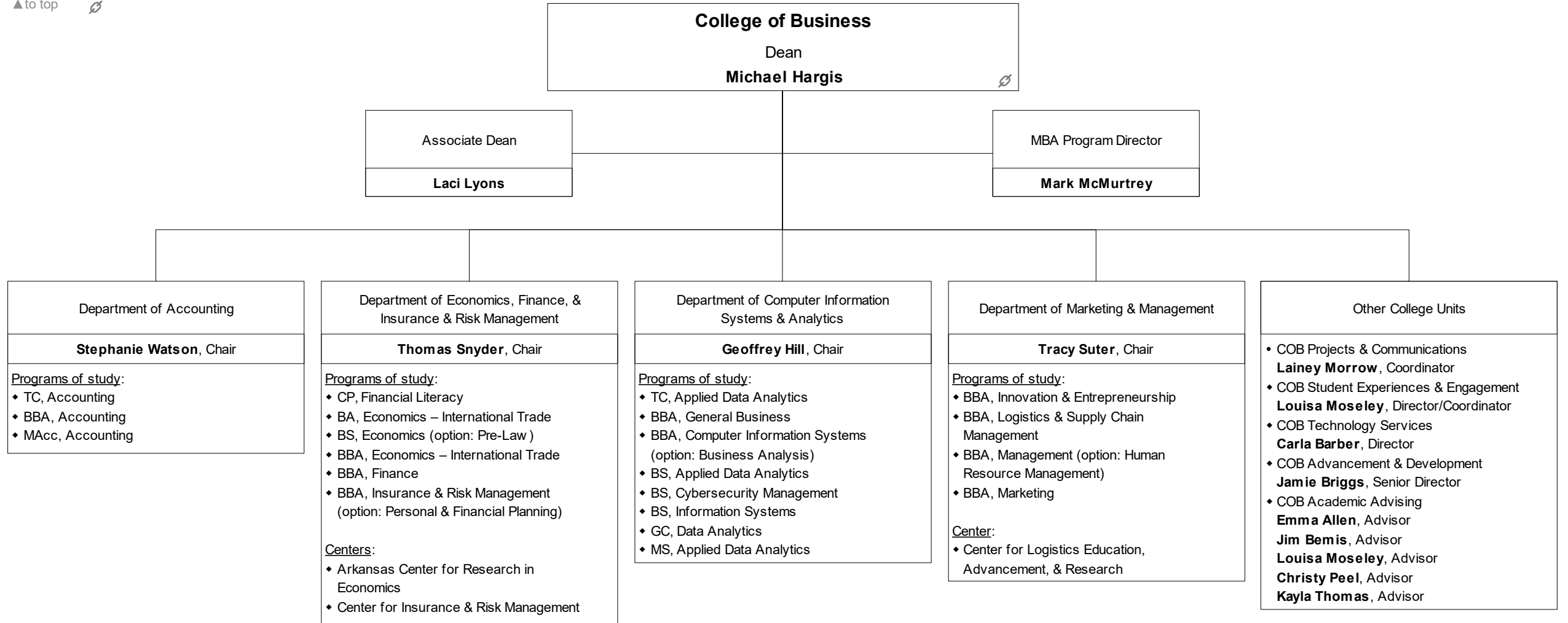
- ♦ BS, Anthropology
- ♦ BS, Criminology
- ♦ BS, Sociology

Organizations/publications:

- ♦ Jamie C. Brandon Center for Archaeological Research
- ♦ *Journal of Undergraduate Research in Anthropology (JURA)*

Other College Programs/Units/Publications

<u>Degree programs:</u>	<u>Center programs:</u>	<u>Publication:</u>
♦ AA, General Education	♦ Asian Studies Development Program Regional Center	♦ Student Journal (online)
♦ BGS, Bachelor of General Studies	♦ Quoined Corner: CAHSS Student Research & Creativity Conference	
	♦ Arts/Humanities/Social Sciences Fair	





**College of Education**  
Dean  
**Victoria Groves-Scott**

Associate Dean  
**Michael Mills**

Department of Elementary, Literacy, & Special Education

**Sunny Styles-Foster**, Chair (interim)

Programs of study:

- ♦ BSE, Elementary Education
- ♦ BSE, Special Education
- ♦ GC, Dyslexia
- ♦ GC, Integrated Early Childhood Education (B-K)
- ♦ GC, Special Education
- ♦ MSE, Literacy with Dyslexia Endorsement
- ♦ MAT, Special Education
- ♦ MSE, Special Education
- ♦ Special Education Resource Endorsement
- ♦ Special Education Minor (non-licensure)

Centers/Institutes:

- ♦ Child Study Center
- ♦ Mashburn Institute

Department of Leadership Studies

**Louis Nadelson**, Chair

Programs of study:

- ♦ GC, Computer Science Teaching & Learning
- ♦ GC, Media Design & Development
- ♦ GC, Online Teaching & Learning
- ♦ MS, College Student Personnel Administration
- ♦ MS, Instructional Technology
- ♦ MS, Library Media & Information Technologies
- ♦ MS, School Counseling
- ♦ MS, School Leadership, Management, & Administration
- ♦ PMC, District-Level Administration
- ♦ PMC, Building Administration
- ♦ PMC, Curriculum Administration
- ♦ PMC, Special-Education Program Administration
- ♦ PMC, Gifted & Talented Program Administration
- ♦ EdS, Educational Leadership

Department of Student Transitions

**Leslie Gomes**, Chair

Academic programming:

- ♦ Corequisite Developmental Courses
- ♦ Academic Success & Personal Development Courses
- ♦ Autism and Neurodiversity Program
- ♦ Upward Bound (TRIO Grant)

Department of Teaching & Learning

**Deborah Dailey**, Chair

Programs of study:

- ♦ BSE, Middle-Level Education
- ♦ GC, Gifted & Talented Education
- ♦ MAT, Teaching
- ♦ MSE, Advanced Studies in Teacher Leadership
- ♦ EdS, Digital Age Teaching and Learning

Undergraduate Minors:

- ♦ Education for Community Engagement (non-licensure)
- ♦ Teaching and Learning (professional education courses for students in a Secondary Education teacher licensure program)

College-Administered Program

- ♦ PhD, Leadership for Equity & Inclusion  
**Michael Mills**, Program Chair

Other College Services

- ♦ Assessment & Accreditation  
**Donna Wake**, Coordinator
- ♦ Candidate Services  
**Gary Bunn**, Director
- ♦ Technology Learning Center  
**Ashley Cooksey**, Director
- ♦ Academic Advising  
**Christina Wolfe**, Advisor  
**Aniaya Worth**, Advisor

Arkansas Public School Resource Center

**Scott Smith**, Executive Director

Arkansas Research Center

**Greg Holland**, Director



**College of Health & Behavioral Sciences**  
 Dean  
**Nancy Reese**

Associate Dean  
**Darshon Reed**

Associate Dean for  
 Interprofessional Education &  
 Community Engagement  
**Chad Lairamore**

Interprofessional Teaching  
 Center Manager  
**Teilena Keathley**

Department of Communication Sciences  
 & Disorders  
**Dee Lance**, Chair  
 Programs of study:  
 ♦ BS, Communication Sciences and  
 Disorders  
 ♦ MS, Communication Sciences and  
 Disorders

Department of Exercise & Sport Science  
**Kim Eskola**, Chair (interim)  
 Programs of study:  
 ♦ BSE, Physical Education (PETE)  
 ♦ BS, Exercise Science  
 ♦ MS, Athletic Training  
 ♦ MS, Exercise Science  
 ♦ MA, Sport Management

Department of Health Sciences  
**Denise Demers**, Chair  
 Programs of study:  
 ♦ Pre-Cardiorespiratory Care  
 ♦ Pre-Dental Hygiene  
 ♦ BS, Addiction Studies  
 ♦ BS, Health Promotion  
 ♦ BS, Health Sciences, Health Services  
 Administration  
 ♦ BS, Medical Laboratory Sciences  
 ♦ BS, Nuclear Medicine Technology  
 ♦ BS, Radiography  
 ♦ MS, Health Promotion

Department of Military Science &  
 Leadership  
**LTC Brett Mardis**, Chair  
 Program of study:  
 ♦ Minor in Military Science

School of Nursing  
**Susan Gatto**, Director  
 Programs of study:  
 ♦ BSN, Pre-Licensure, Nursing  
 ♦ BSN, RN to BSN, Nursing  
 ♦ MSN, Nurse Educator  
 ♦ PMC, Nurse Educator, Family Nurse  
 Practitioner  
 ♦ DNP, BSN to DNP, Family Nurse  
 Practitioner  
 ♦ DNP, Post-Master's, Nursing

Department of Nutrition & Family  
 Sciences  
**Nina Roofo**, Chair  
 Programs of study:  
 ♦ BSE, Family & Consumer Sciences  
 ♦ BS, Family & Consumer Sciences  
 ♦ BS, Community Nutrition  
 ♦ BS, Dietetics  
 ♦ BS, Nutrition Science  
 ♦ MS, Family and Consumer Sciences  
 ♦ MS, Nutrition, with Dietetics & Nutrition  
 Therapy track

Department of Occupational Therapy  
**Tina Mankey**, Chair  
 Program of study:  
 ♦ OTD, Occupational Therapy

Department of Physical Therapy  
**Kevin Garrison**, Chair  
 Programs of study:  
 ♦ DPT, Physical Therapy  
 ♦ PhD, Physical Therapy  
 ♦ Residency in Pediatric Physical  
 Therapy

Department of Psychology & Counseling  
**Art Gillaspy**, Chair  
 Programs of study:  
 ♦ BS, Psychology  
 ♦ MS, Mental Health Counseling  
 ♦ EdS, School Psychology  
 ♦ PhD, Psychology



**College of Natural Sciences & Mathematics**  
Dean  
**Stephen Addison**

Associate Dean  
**Kari Naylor (interim)**

Department of Biology

---

**Brent Hill, Chair**

---

Programs of study:

- ◆ BS, Biology
- ◆ BS, Environmental Science – Biology
- ◆ MS, Biology

Other facilities:

- ◆ Microscope facility
- ◆ Jew el Moore Nature Reserve

Department of Computer Science & Engineering

---

**Emre Celebi, Chair**

---

Programs of study:

- ◆ BS, Computer Engineering
- ◆ BS, Computer Science
- ◆ BS, Cybersecurity
- ◆ BS, Data Science
- ◆ MS, Computer Science

Department of Mathematics

---

**Fred Hickling, Chair (interim)**

---

Programs of study:

- ◆ BS, Mathematics
- ◆ MA, Mathematics Education
- ◆ MS, Applied Mathematics

Department of Physics & Astronomy

---

**Carl Frederickson, Chair**

---

Programs of study:

- ◆ BS, Engineering Physics
- ◆ BS, Physics
- ◆ BS, General Science

Other facilities:

- ◆ Observatory
- ◆ Planetarium

Department of Chemistry & Biochemistry

---

**Kristin Dooley, Chair**

---

Programs of study:

- ◆ BS, Chemistry
- ◆ BS, Environmental Science – Chemistry

Department of Geography

---

**Stephen O'Connell, Chair**

---

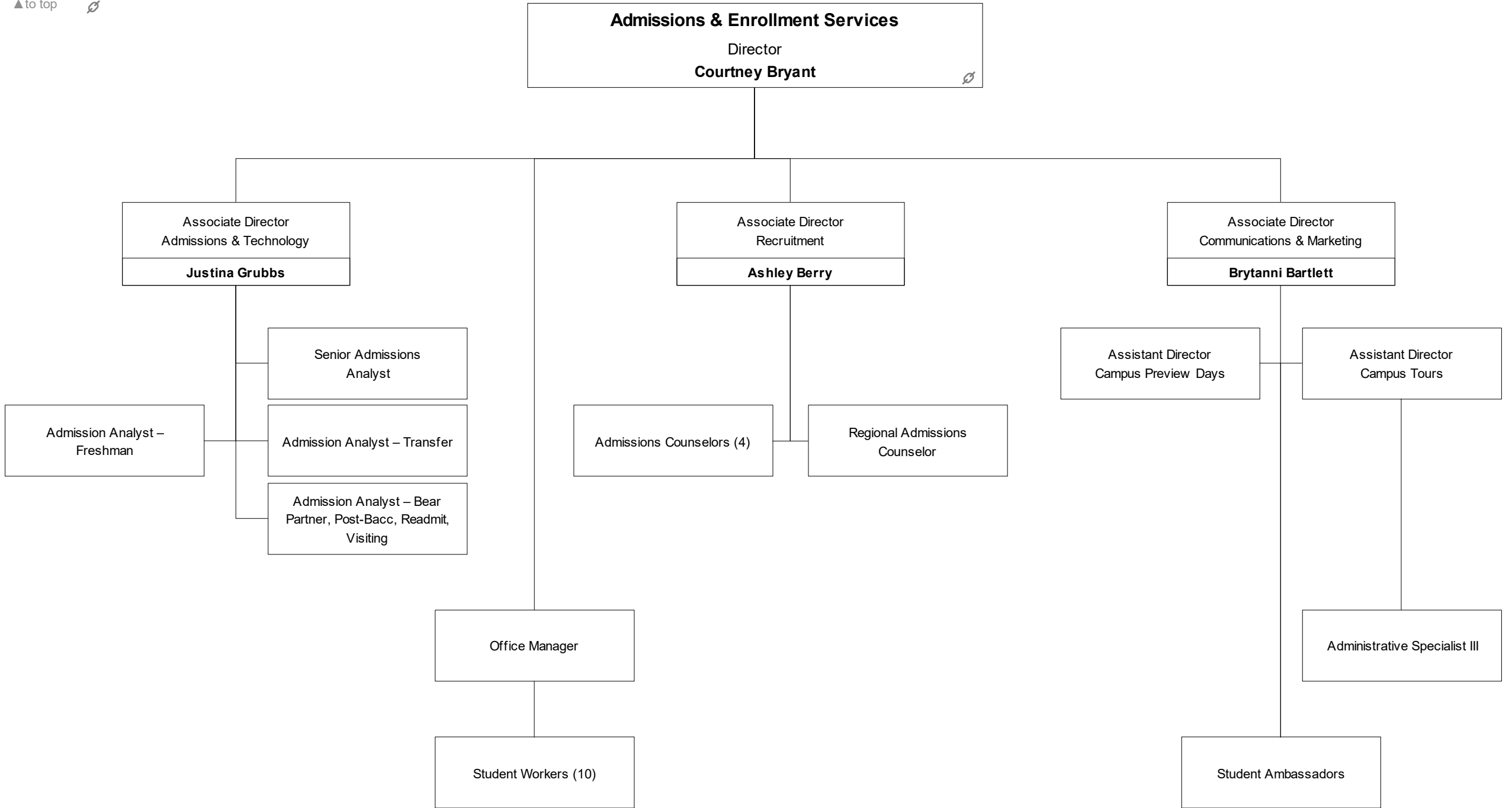
Programs of study:

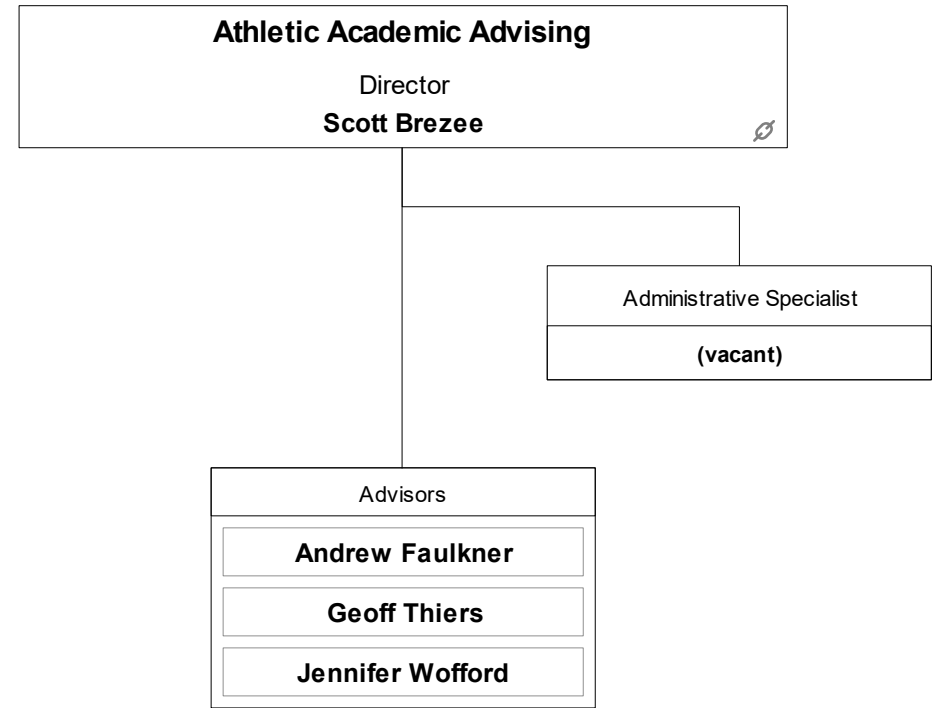
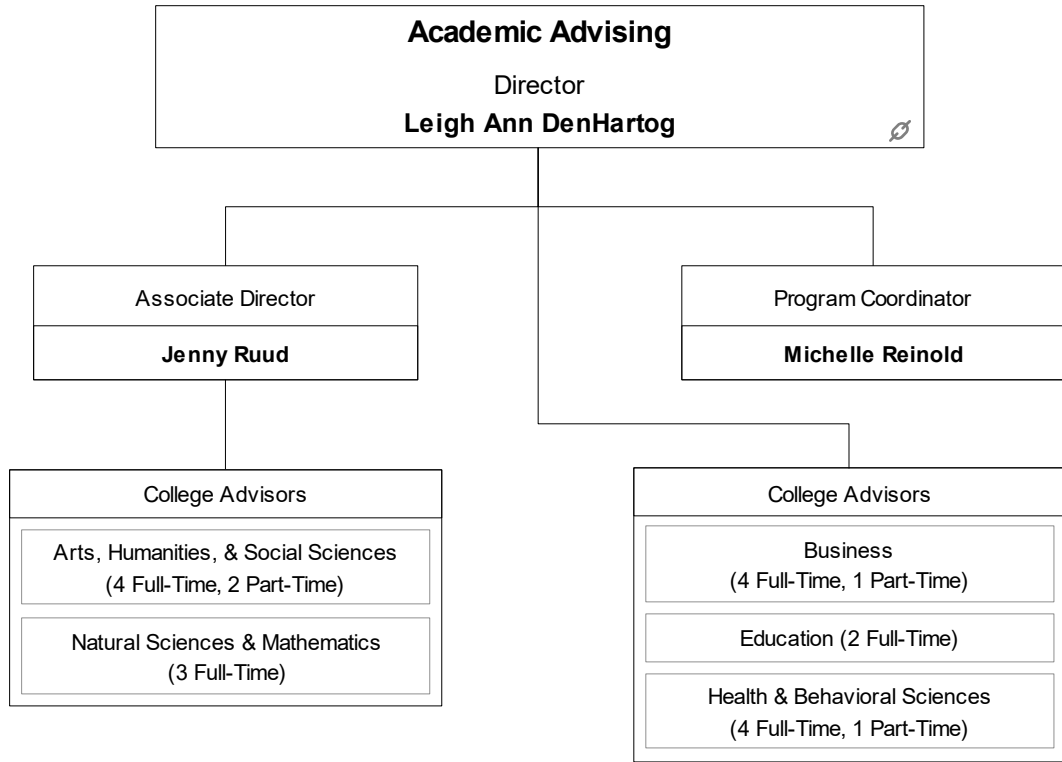
- ◆ BS, Geography
- ◆ BS, Environmental Science – Planning and Administration
- ◆ GC, Geographic Information Systems
- ◆ MGIS, Geographic Information Systems

Special Initiatives

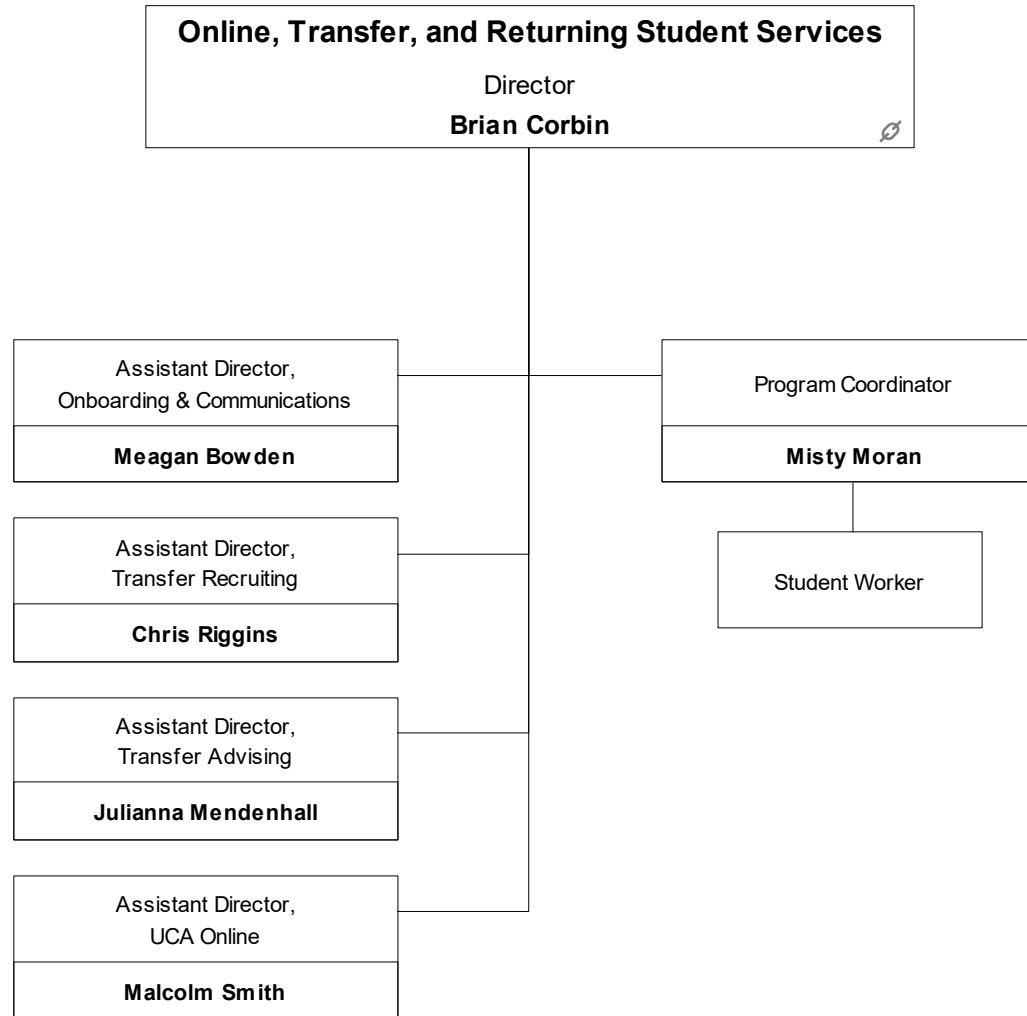
UCA STEM Institute  
**Lisa Skultety & Todd Abel**  
Co-Directors

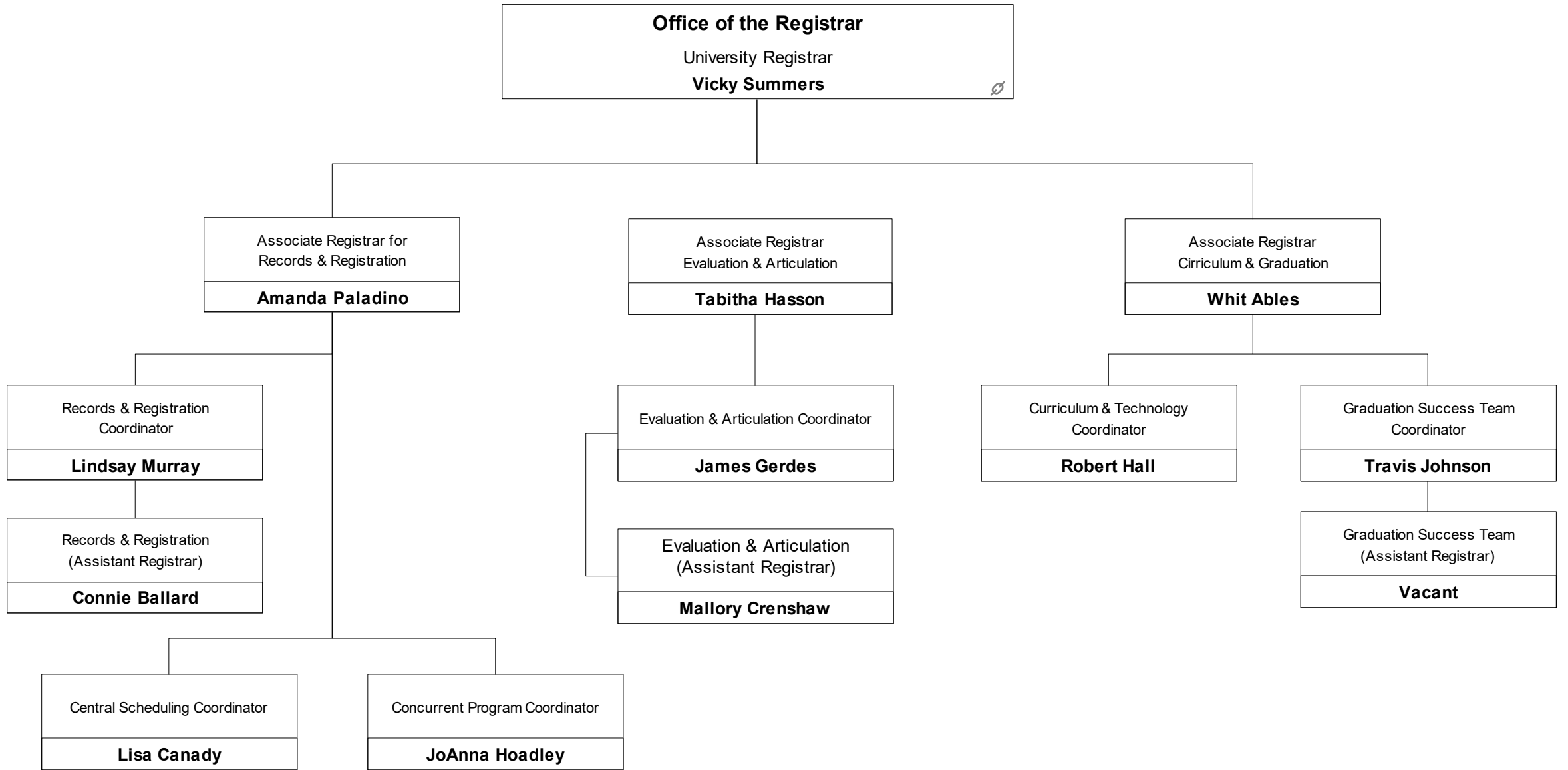
Arkansas Coding Academy  
**Alison Wish, Director**





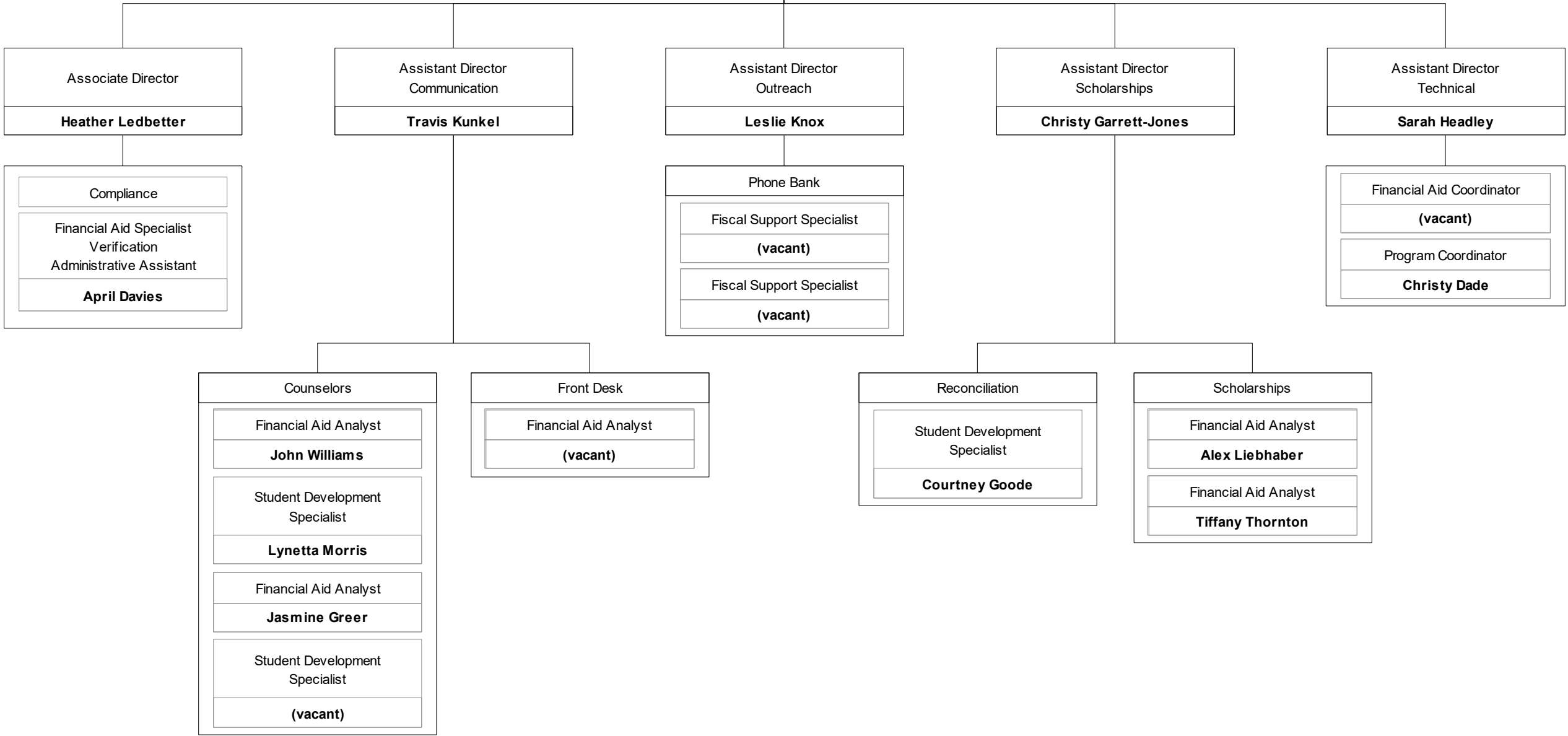


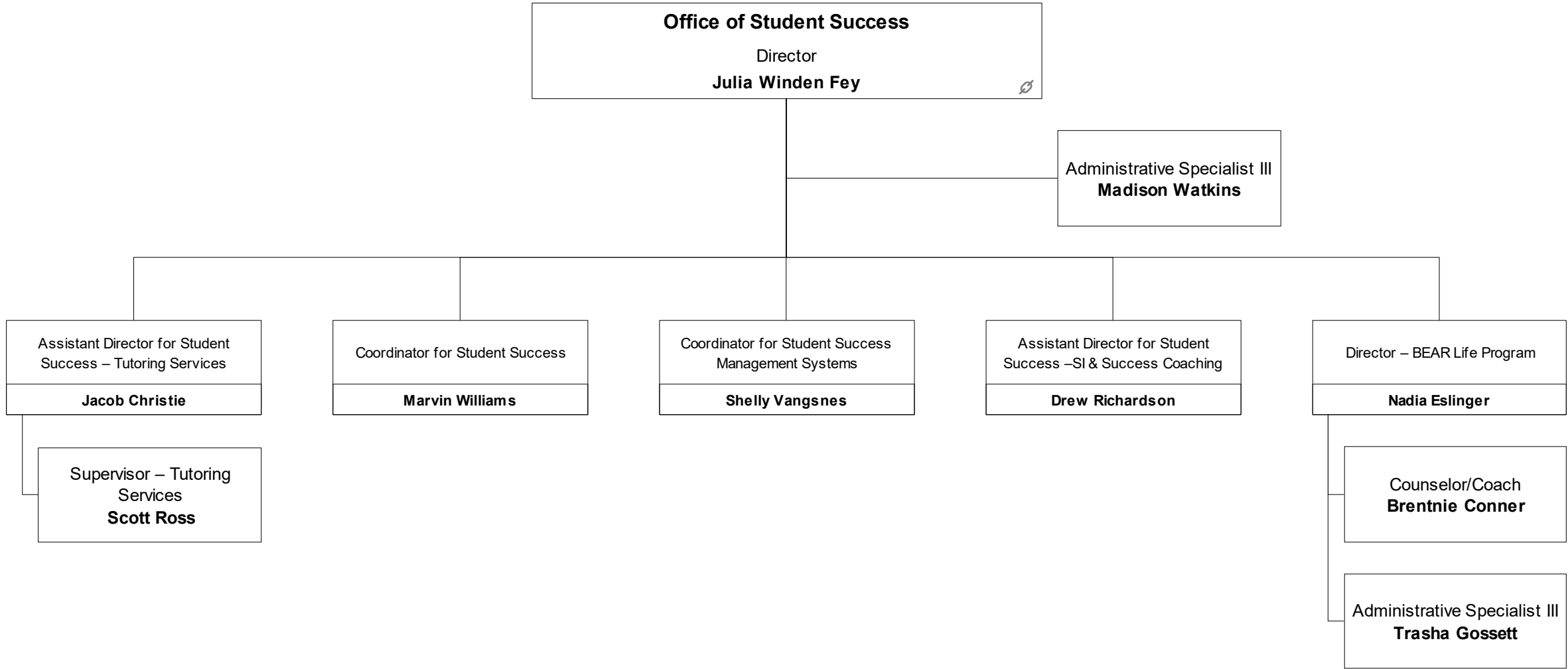


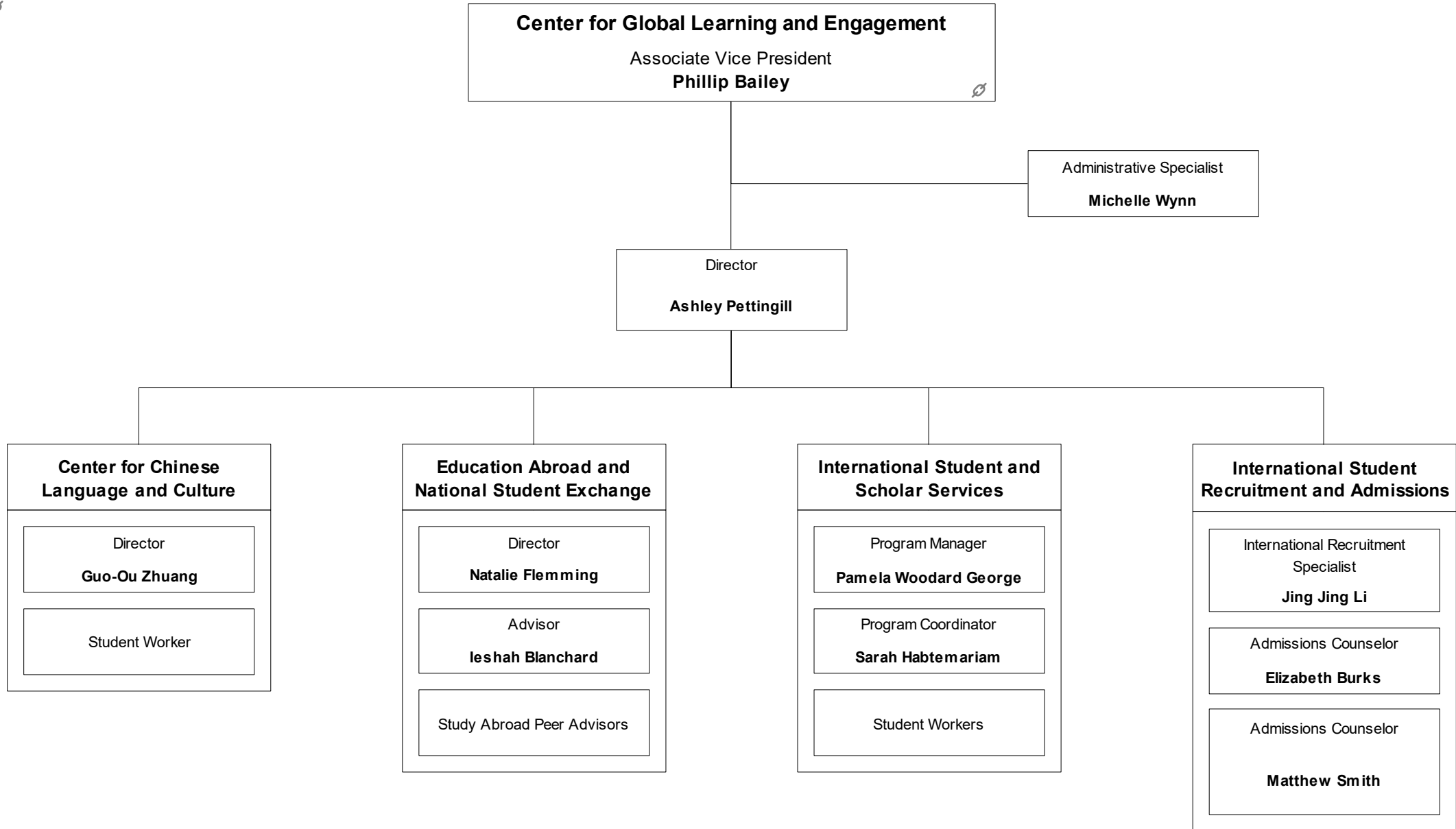


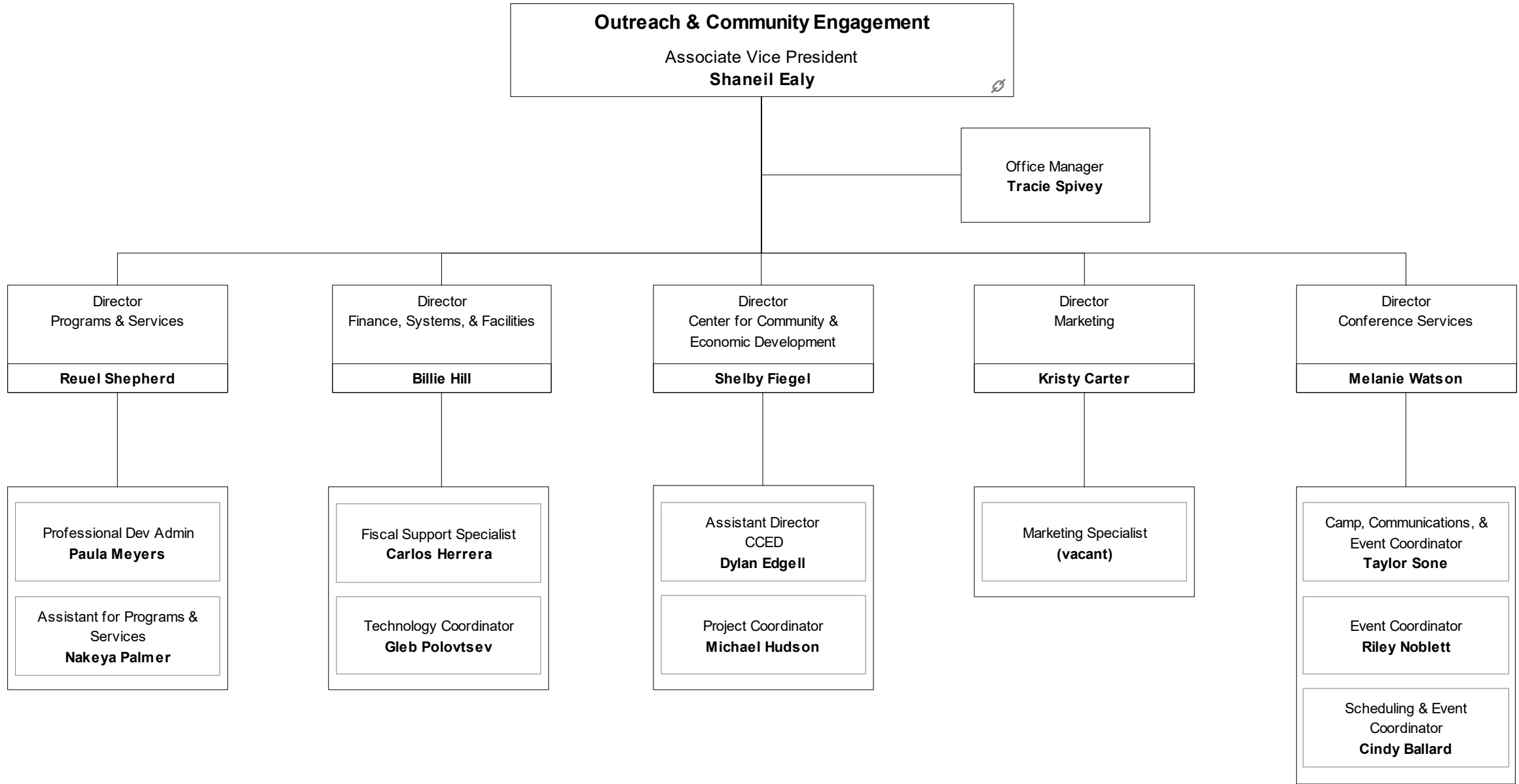


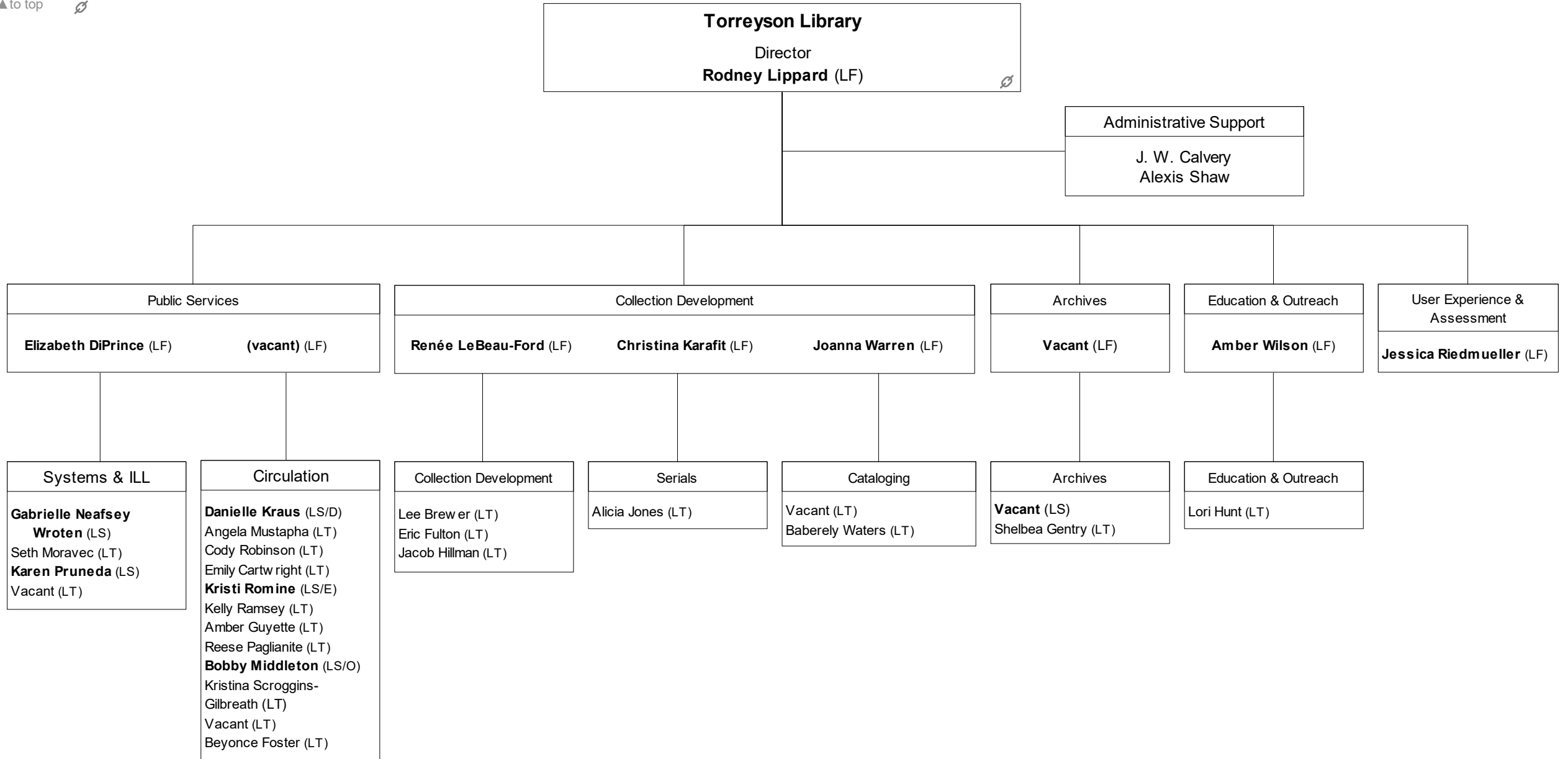
**Student Financial Aid**  
Director  
**Kimberly Stubbs**











Legend:

LF = Library Faculty  
 LS = Library Supervisor  
 LT = Library Technician

D = Day  
 E = Evening  
 O = Overnight