



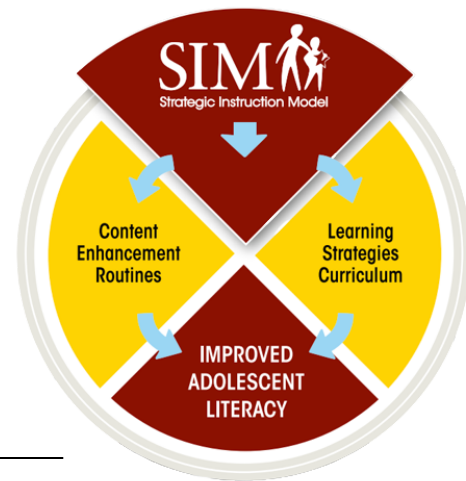
UNIVERSITY OF
CENTRAL
ARKANSAS™

The UCA Mashburn Center for Learning

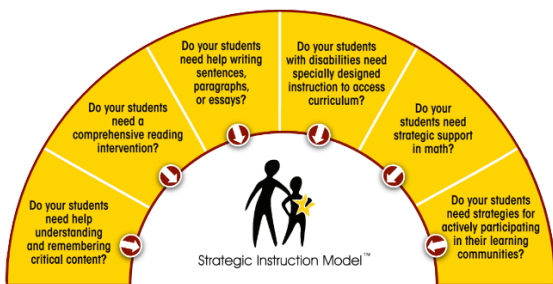
SIM Instructional Tools & Interventions

The Strategic Instruction Model is a comprehensive, research-validated approach to adolescent literacy that addresses the needs of students to be able to read and understand large volumes of complex materials as well as their need to be able to express themselves effectively in writing.

[SIM Overview \(click here\)](#)



The University of Kansas Center for Research on Learning has been working to improve the lives of learners who struggle since 1978. We would like to share with you some of the ways in which their work has changed lives for the better. [SIM Impact \(click here\)](#)



For more than 40 years, the University of Kansas Center for Research on Learning has worked directly with classroom teachers to develop materials that improve the learning experience for students and the teaching experience for teachers. As a result, we have the research, success stories, and proven track record to help schools succeed in meeting the needs of their students.

High-Leverage Practices and SIM

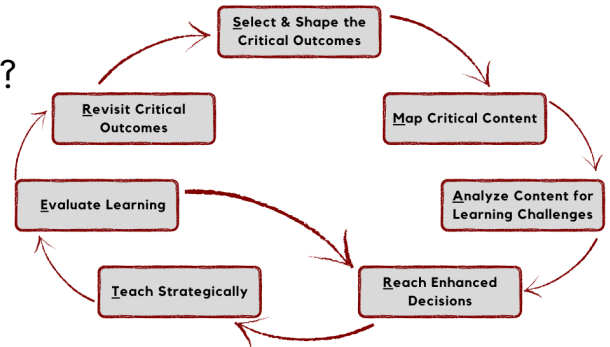
[A Crosswalk: High-Leverage Practices in Special Education and Strategic Instruction Model \(SIM™\) Instructional Tools and Interventions \(click here\)](#)

PLC Connections with SIM SMARTER Planning & Instructional Cycle

A PLC Aims to Answer Four Essential Questions:

- What do we want all students to know and be able to do?
- How will we know if they learn it?
- How will we respond when some students do not learn?
- How will we extend the learning for students who are already proficient?

SMARTER PLANNING & INSTRUCTIONAL CYCLE



Arkansas SIM Professional Development Participation

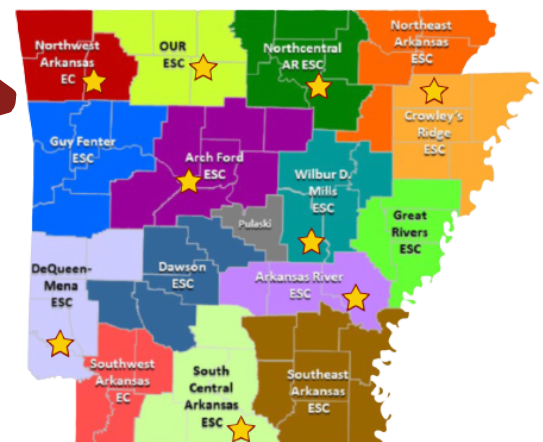
What Can I Expect to Receive?

- SIM Overview
- SIM Professional Materials
- SIM Professional Development
- Instructional Coaching

What Will be Expected of Me?

- Participation in the SIM Professional Development
- Implementation of Professional Learning with Students
- Participation in Coaching Sessions
- Data Collection and Reporting

Where are SIM Professional Developers Located in Arkansas?



Patty Kohler, Ed.D.

Co-Director, UCA Mashburn Center for Learning
Phone: (501) 450-3171

Renee Calhoon, Ed.D.

Co-Director, UCA Mashburn Center for Learning
Phone: (501) 852-0282