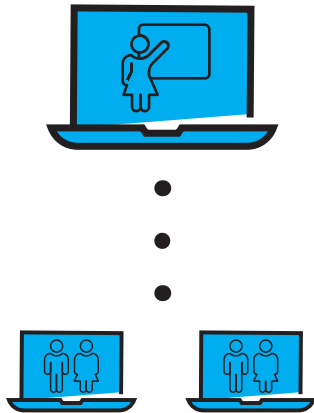




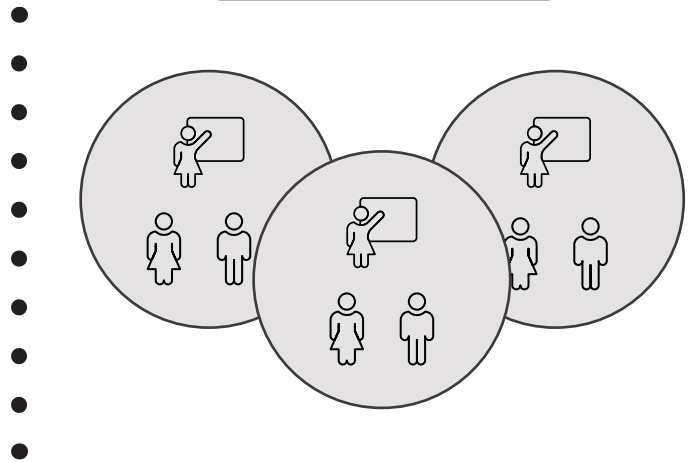
# Hybrid Delivery

## Consultation Model

### Online Group



### In-Class Small Groups



All course delivery is done 100% online. Instructors can meet with small groups of students in-class on a regular basis. The group sizes can be determined by the faculty while maintaining safety guidelines.

### PROS:

- Allowed to help students through small group interactions

### CONS:

- No in-class instruction
- More up-front class preparation
- All assessments would be done online

## What Instructor Sees

Student Group	Session 1	Session 2	Session 3
Group A			
Group B			
Group C			
Group D (Online Only Students)			

