



Creating Connected Communities

Arkansas Leaders Consortium

March 30, 2022

Presenters



Jordyn Williams
Sr. Program Associate
U.S. Programs
Winrock International



Dave Roberts
Sr. Vice President
Planning
Crafton Tull

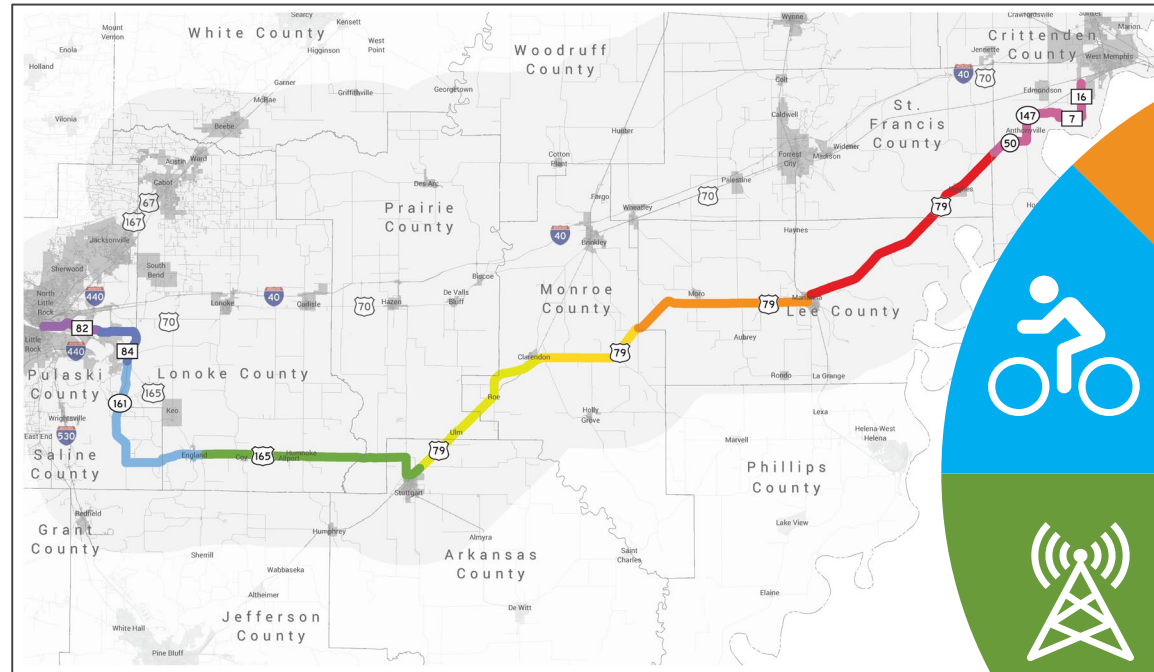


Bethany Hildebrand
President & CEO
**Stuttgart Chamber of
Commerce**

USDA Rural Placemaking Innovation Challenge



Jordyn Williams
Sr. Program Associate
U.S. Programs
Winrock International



Goal:

To capitalize on local community assets and potential through the creation of quality public spaces that contribute to the community's social, physical and economic well-being.



Teamwork



The diagram consists of three overlapping circles arranged horizontally. The leftmost circle is blue and contains the text 'Local Community Context'. The middle circle is green and contains the text 'Project Partners and Technical Expertise'. The rightmost circle is purple and contains the text 'Regionalism'. The circles overlap in the center, and there are grey curved lines on the left and right sides of the circles, suggesting a flow or connection between the elements.

Local Community
Context

Project Partners
and Technical
Expertise

Regionalism

Project Partners

Crafton Tull

- Master Bicycle-Pedestrian Plan
- Steering Committee, Public Forums



UAMS SPAN

- Master Bicycle-Pedestrian Plan
- Walk Action Institute



Thrive

- Wayfinding signage design
- Crosswalk art
- Public murals
- Informational map design



USDA Rural Development

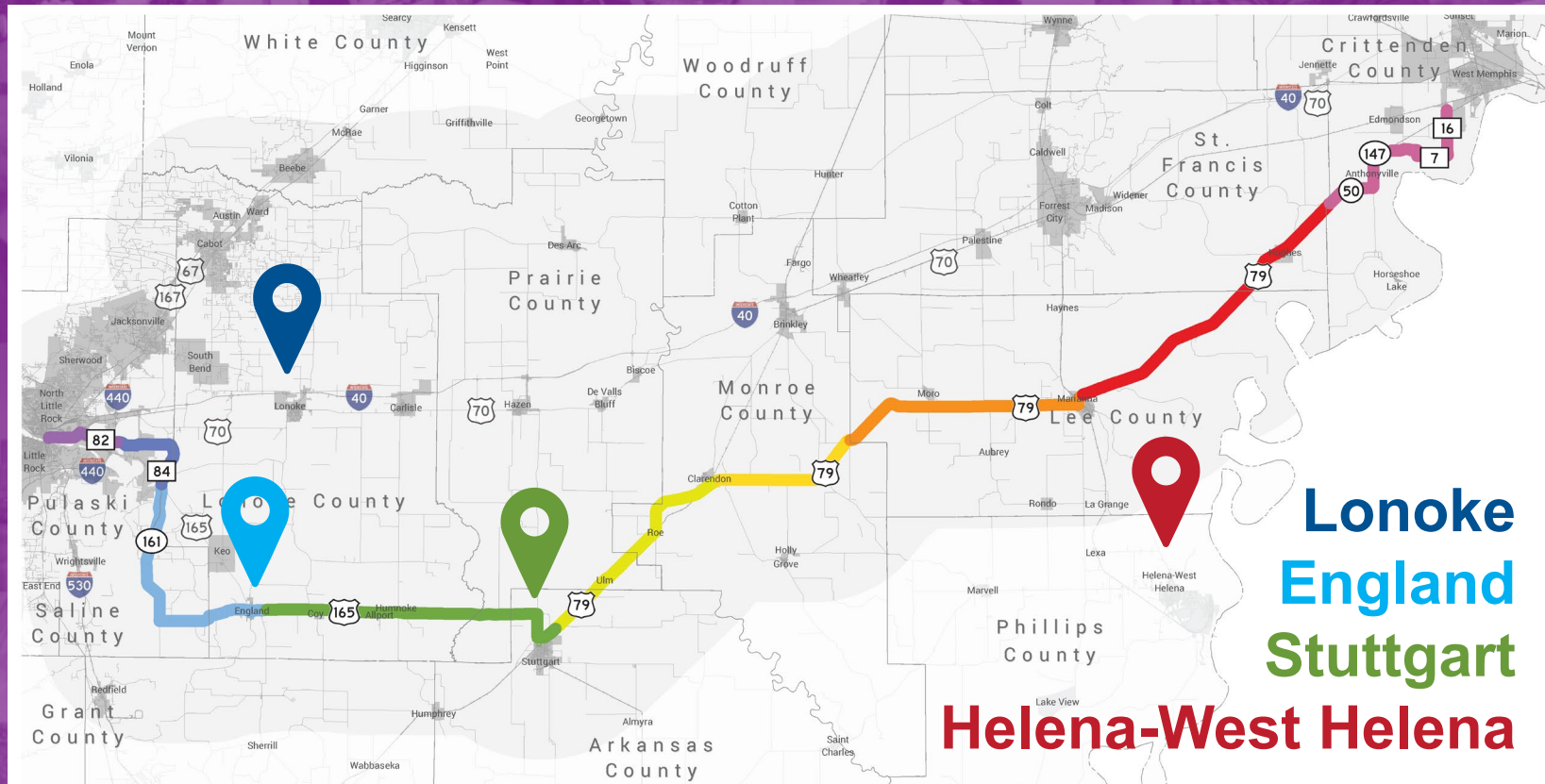
- Connections to other federal partners and programs



Rural Development



Regionalism



- Develop Hub Community network along USBR80
- Opportunity to build connections with leaders in other communities
- Foster learning and mentorship



LEVERAGING STATE INITIATIVES



Dave Roberts
Sr. Vice President
Planning
Crafton Tull



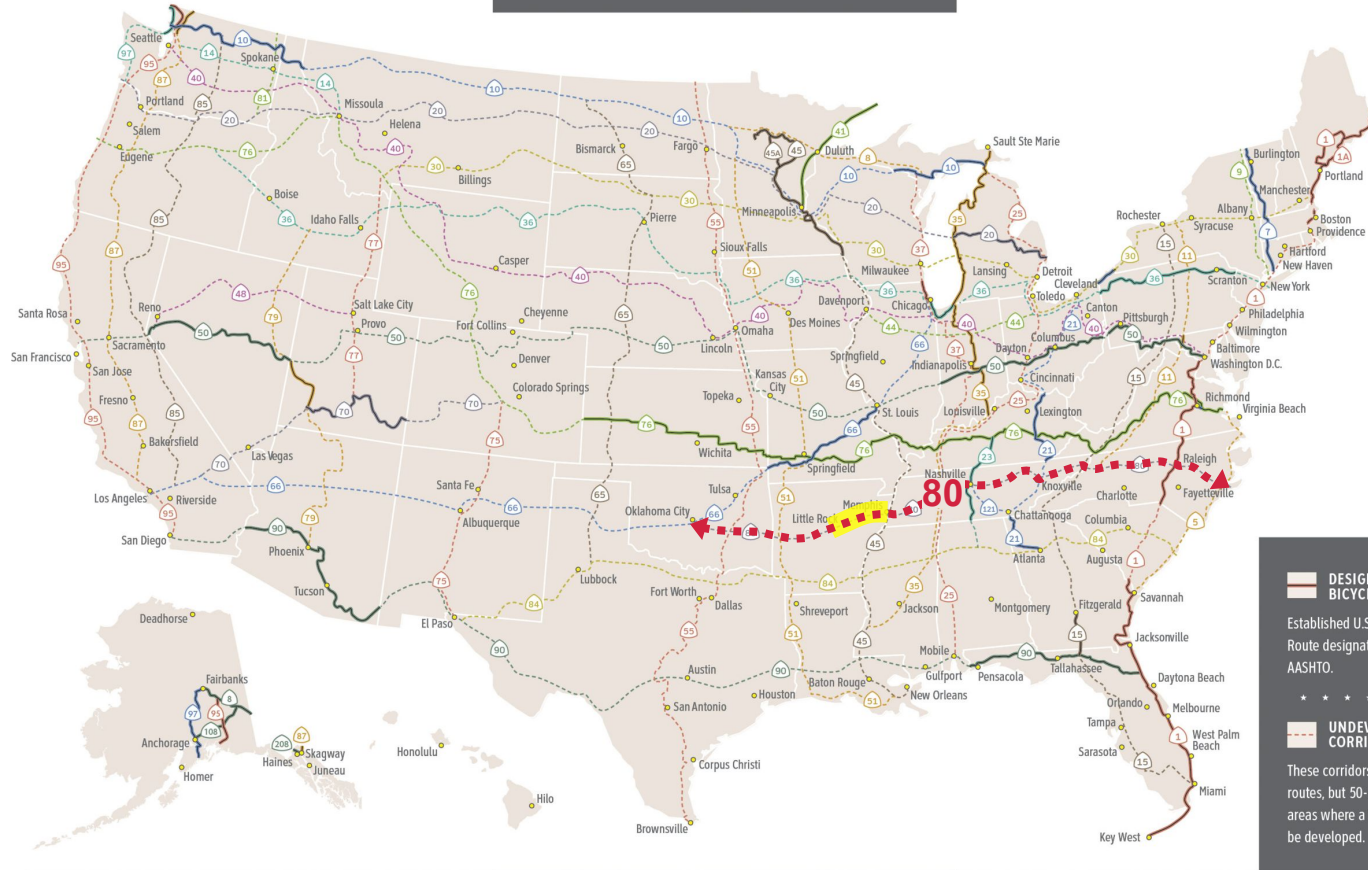
INTRODUCTION



The goal of The United States Bicycle Route System is to connect America through a network of numbered interstate bicycle routes.

NATIONAL CORRIDOR PLAN

June 2019



DESIGNATED U.S. BICYCLE ROUTE

Established U.S. Bicycle Route designated by AASHTO.

UNDEVELOPED CORRIDOR

These corridors are not routes, but 50-mile wide areas where a route may be developed.

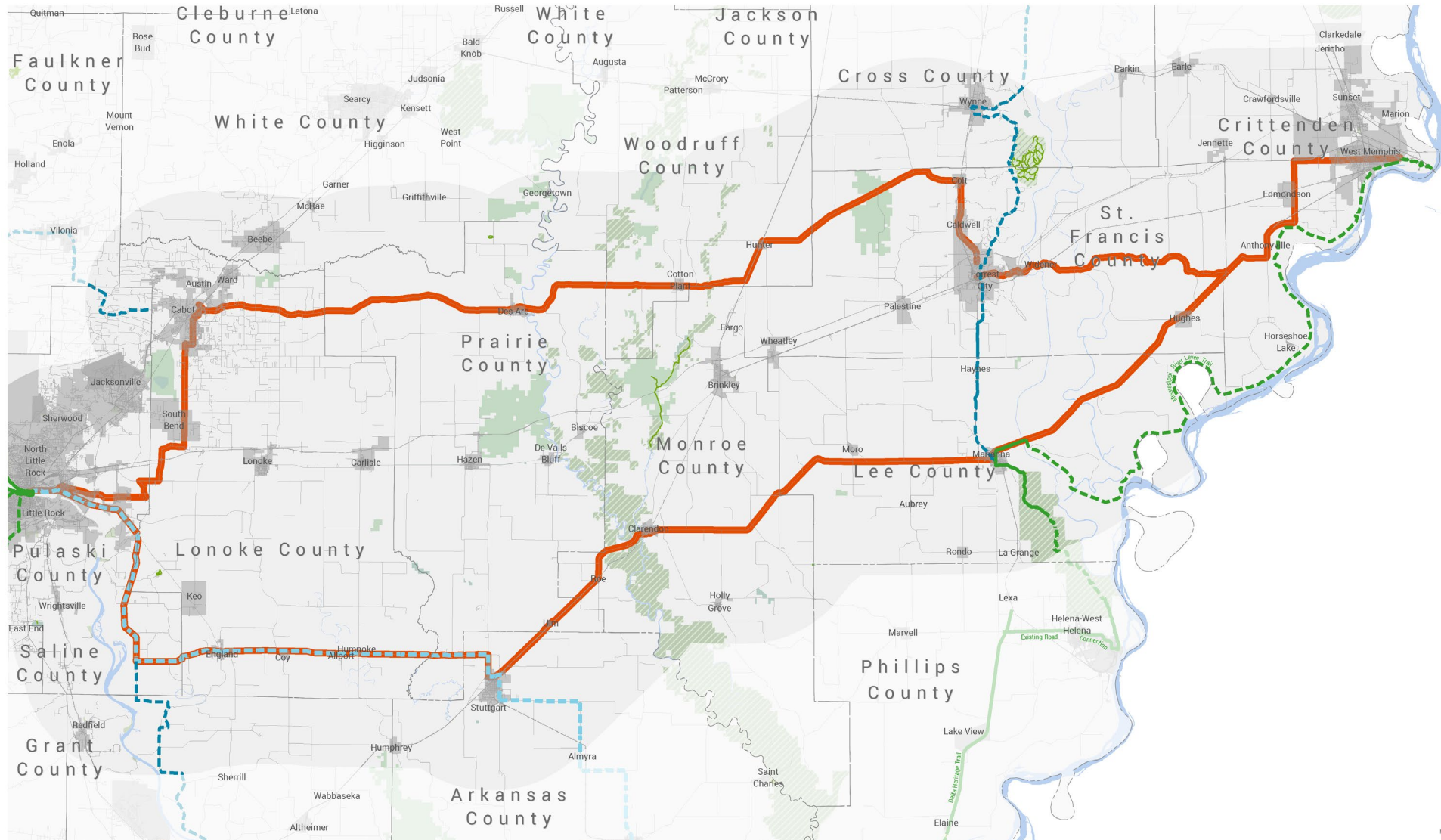
ADVENTURECYCLING.ORG/USBR

HUB COMMUNITIES CRITERIA



	◇	◇◇	◇◇◇	◇◇◇◇
Food/Lodging/Water	<ul style="list-style-type: none"> • Basic food offerings and free water supply • Tent camping permitted 	<ul style="list-style-type: none"> • Dine-In Restaurants • Motel/Airbnb or Camping with electricity and restrooms (www.warmshower.org) 	<ul style="list-style-type: none"> • Restaurants with specific healthy food choices (grains and fresh fruits and vegetables) • Multiple lodging options (camping, motel, hotel, Airbnb) 	<ul style="list-style-type: none"> • Multiple options for healthy food offerings • Multiple lodging options (camping, motel, hotel, Airbnb)
Medical and Support Services	<ul style="list-style-type: none"> • Bike fixit stations + tubes and repair kit for purchase at a convenience or hardware store 	<ul style="list-style-type: none"> • Pop-up bike repair (volunteer bike mechanic) • Access to urgent care or medical clinic 	<ul style="list-style-type: none"> • Volunteer bike repair mechanic or bike shop • Access to urgent care or medical clinic 	<ul style="list-style-type: none"> • Bike shop for all repair and purchase needs • 24-hour – or extended hours for a medical facility and pharmacy • Public laundry services
Safe local pedestrian and cycling routes	<ul style="list-style-type: none"> • Share the road signs on applicable City streets • Bike education for Police Department (rules and safety) 	<ul style="list-style-type: none"> • Safe bike route with paths or bike lanes in town • Bicycle education program for police and community leaders 	<ul style="list-style-type: none"> • Connected bike network with lanes and paths • Bicycle safety education programs in schools with police and community leaders • Fixed Route Transit or Taxi/Uber/Lyft services 	<ul style="list-style-type: none"> • Connected bicycle network identified in an adopted bicycle and pedestrian master plan • Adopted complete street policy/ordinance
Local leadership commitment, marketing, budget for Operations and Maintenance (policy-related)		<ul style="list-style-type: none"> • Adopted resolution to develop plan(s) for mobility and accessibility. 	<ul style="list-style-type: none"> • Wayfinding signage • <i>Cycling and pedestrian attractions promoted by local advertising and promotion entity.</i> • <i>Has a locally-adopted bike/ped plan for the community.</i> 	<ul style="list-style-type: none"> • Implementing locally-adopted bike/ped plan for community • Formal commitment for participation (e.g. to maintain provided signage). • Wayfinding signage with bike parking shown on a route map • Bike tour of town offered
Community and Cultural attractions and destinations			<ul style="list-style-type: none"> • Cultural experiences and/or natural amenity within a biking or walking distance 	<ul style="list-style-type: none"> • Multiple cultural and natural destinations and events within a biking or walking distance
Benefits of HUB Community Classification	<ul style="list-style-type: none"> • Two (2) signs/placards • Designation on the USBR map and the Arkansas Bike Suitability Map • Link to ADPT website - tourism potential 	<ul style="list-style-type: none"> • Two (2) signs/placards • Designation on the USBR map and the Arkansas Bike Suitability Map • UAMS Education Support 	<ul style="list-style-type: none"> • Two (2) signs/placards • Designation on the USBR map and the Arkansas Bike Suitability Map • Implementation Workshop 	<ul style="list-style-type: none"> • Two (2) signs/placards • Designation on the USBR map and the Arkansas Bike Suitability Map • Pop Up Workshop (Livability Workshop, Walk Audits)

ROUTES



FIELD VERIFICATION: ROUTES



Special Considerations



Bridge Widths



Shoulder Widths and

Condition

FIELD VERIFICATION: AMENITIES



Downtowns



Rural Services



Health Facilities



Camping

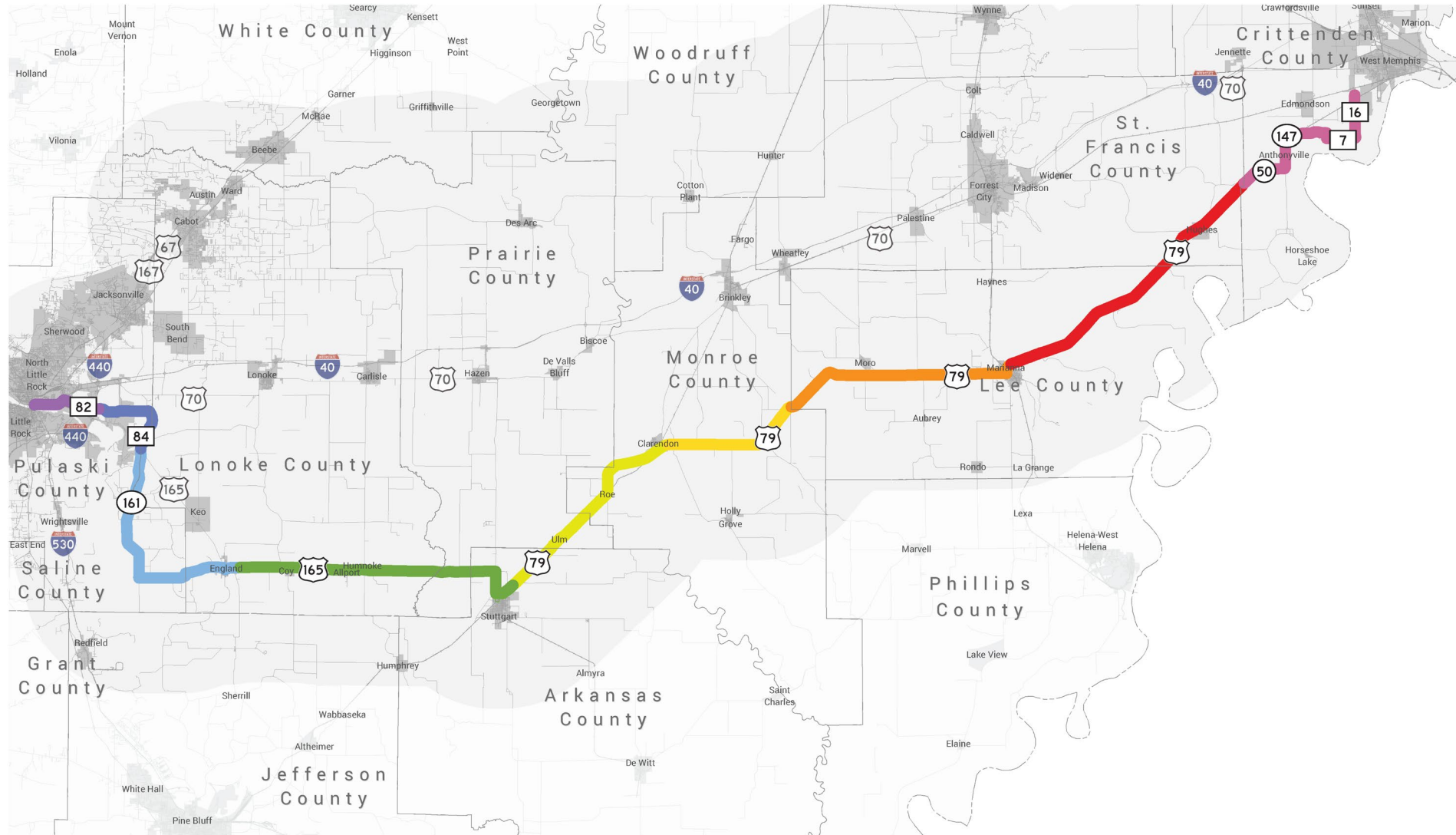
FIELD VERIFICATION: CONNECTIONS



- Big River Trail
- Mississippi River Trail
- Harahan Bridge
- Clinton Presidential Park Bridge
- Arkansas River Trail
- Proposed USBR TransAmerica Link
- Statewide



SELECTED ROUTE: SOUTHERN



PROOFING RIDE



PROOFING RIDE





- ✓ **Partnerships with Municipalities and Counties along route**
- ✓ **Secure State & Local Resolutions of Support**
- **Apply for USBR Designation to AASHTO**
- **Roll-out Hub Communities Program**





Project Team



Commissioned Feasibility Study



Project Partner



Project Partner

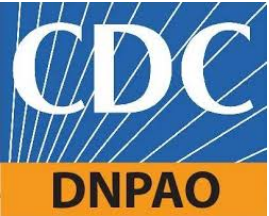


Consultant

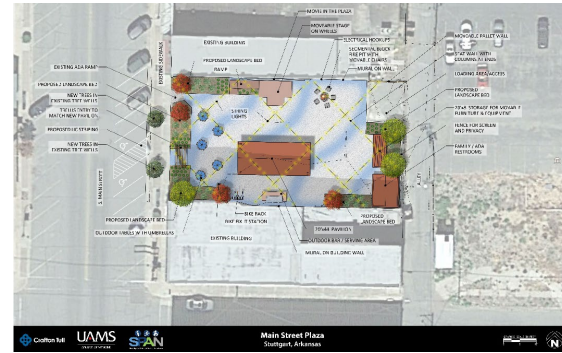
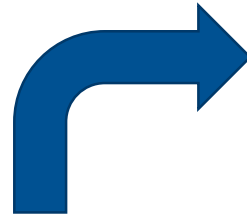
Collaboration for Success



Bethany Hildebrand
President & CEO
Stuttgart Chamber of
Commerce



Built Environment Technical Assistance “Flow”



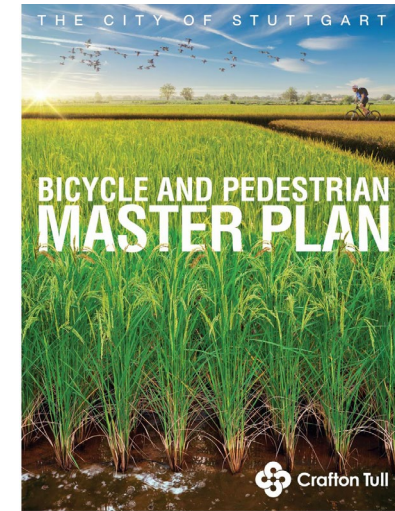
Park Planning



Walk Audits



Pop-Up Pilots



Master Bike-Ped Plans



Stuttgart, Arkansas

Walk Audit: June 2, 2020



Stuttgart, Arkansas

- ❖ **Pocket Parks:** A downtown vacant lot situated between two buildings can become a small park space with the addition of site furniture, shade elements and public art. This pocket park becomes the perfect outdoor eating space for adjacent restaurants or a nice place for respite for pedestrians walking and shopping the downtown area. Retaining the existing building façade (shown below - right) will define the open space and is a remnant of downtown's history.

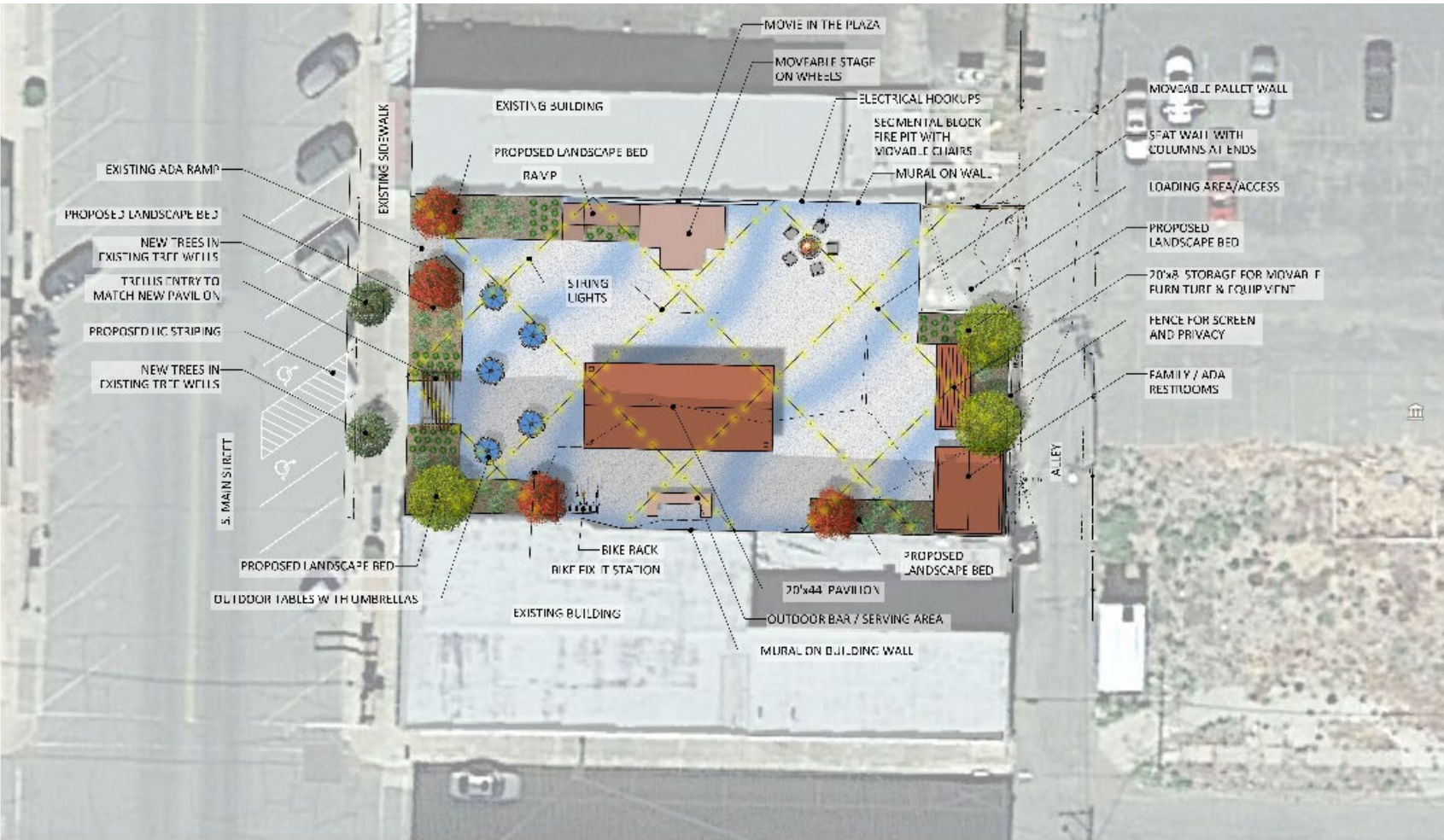


Pop-up Pocket Park: May 28, 2021



Stuttgart, Arkansas

Downtown Revitalization

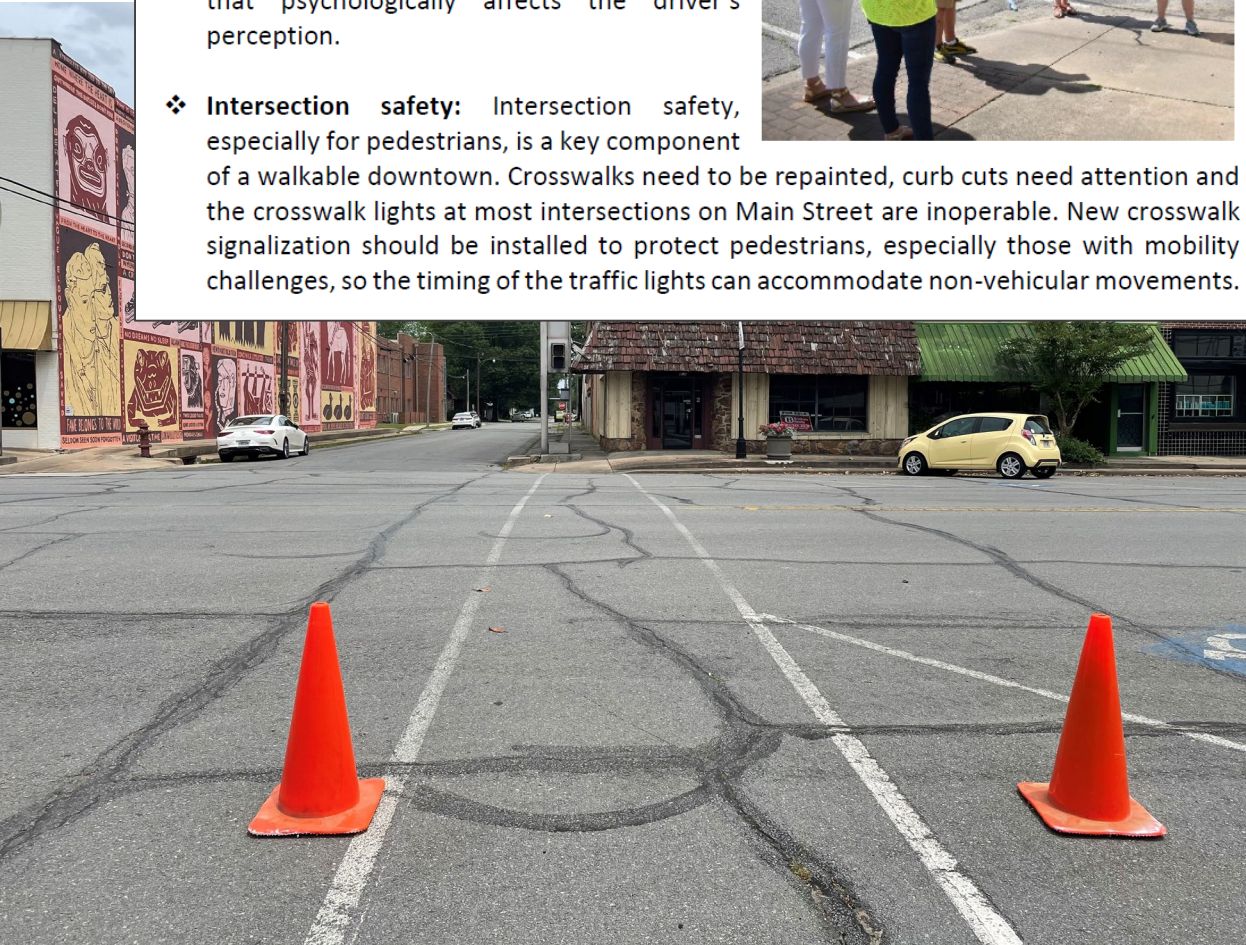


Stuttgart, Arkansas

Pop-up Crosswalks: May 28, 2021

❖ **Curb Extensions:** Main Street and the cross streets (2nd through 9th) could utilize curb extensions to protect pedestrians crossing at intersections by reducing the width of road they need to traverse. These 'bulb outs' will also provide protection to the adjacent parked cars as well. Curb extensions help to reduce traffic speeds by creating a visual narrowing that psychologically affects the driver's perception.

❖ **Intersection safety:** Intersection safety, especially for pedestrians, is a key component of a walkable downtown. Crosswalks need to be repainted, curb cuts need attention and the crosswalk lights at most intersections on Main Street are inoperable. New crosswalk signalization should be installed to protect pedestrians, especially those with mobility challenges, so the timing of the traffic lights can accommodate non-vehicular movements.



Stuttgart, Arkansas

Pedestrian Safety



Stuttgart, Arkansas

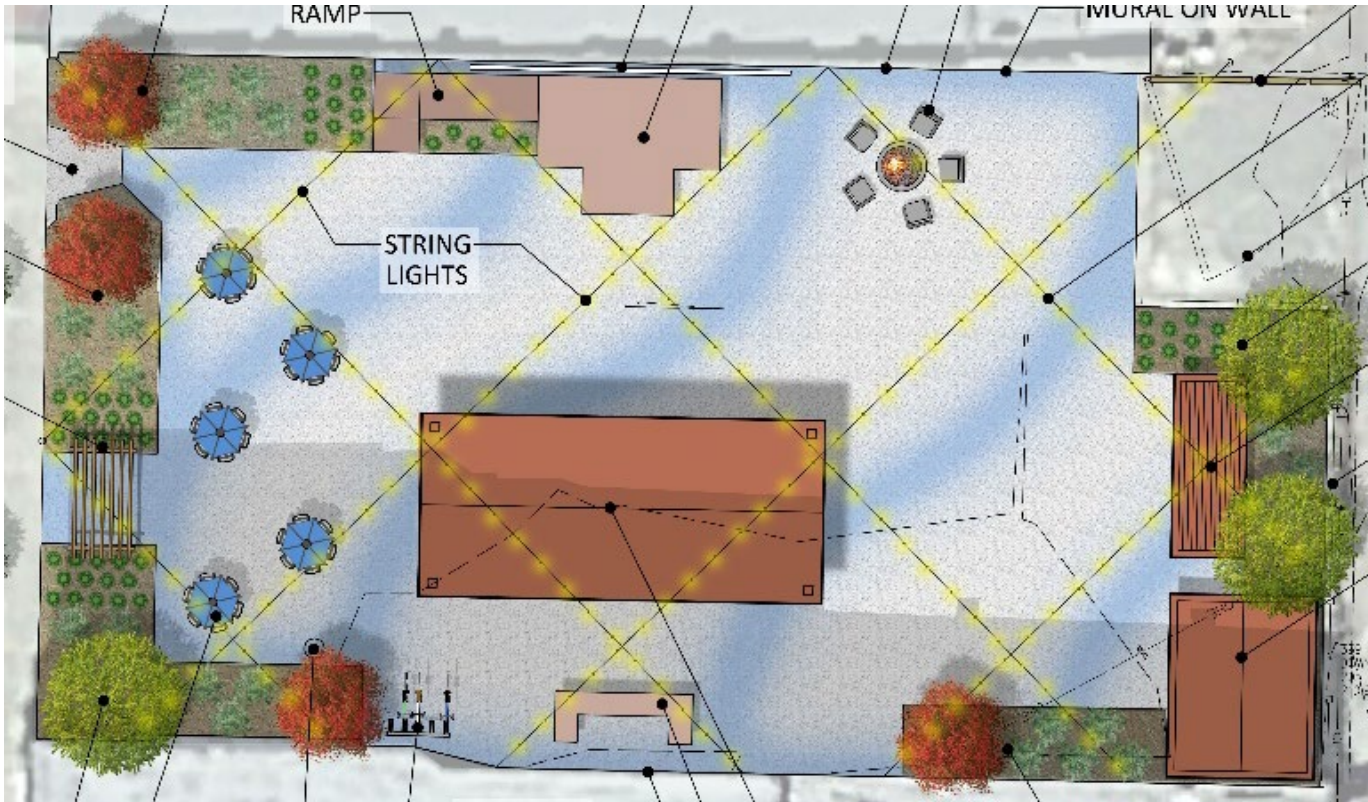
Park Planning for Outdoor Recreation Grant: Summer 2021



OPINION OF PROBABLE COST
DESCRIPTION: Stuttgart Plaza
DATE: July 9, 2021

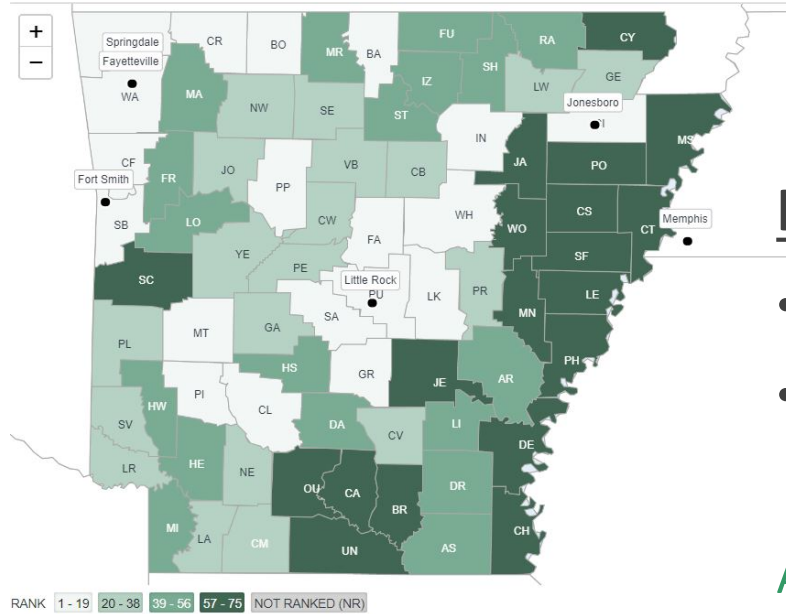
ITEM	DESCRIPTION	UNITS	ESTIMATED QUANTITY	UNIT PRICE	TOTAL
1.0	Mobilization	LS	1.00	\$10,000.00	\$10,000.00
2.0	Demolition	LS	1.00	\$25,000.00	\$25,000.00
3.0	Paving	Sq. Ft.	8,298.00	\$10.00	\$82,980.00
4.0	Outlets	Ea.	5.00	\$500.00	\$2,500.00
5.0	Outdoor String Lights	LF	681.00	\$2.00	\$1,362.00
6.0	Filter Fabric	Sq. Yds.	199.00	\$3.25	\$646.75
7.0	Class 7 Aggregate	Tons	184.00	\$24.00	\$4,416.00
8.0	Topsoil	Cu. Yds.	200.00	\$25.00	\$5,000.00
9.0	Mulch	Cu. Yds.	20.00	\$25.00	\$500.00
10.0	Trees	Ea.	8.00	\$350.00	\$3,150.00
11.0	Shrubs	Ea.	21.00	\$35.00	\$735.00
12.0	Groundcover	Ea.	55.00	\$25.00	\$1,375.00
13.0	Drainage	LS	1.00	\$15,000.00	\$15,000.00
14.0	Bike Rack	Ea.	1.00	\$500.00	\$500.00
15.0	Bike Fix-It Station	Ea.	1.00	\$900.00	\$900.00
16.0	Outdoor Bar	Ea.	1.00	\$5,000.00	\$5,000.00
17.0	Umbrella Tables w/ chairs	Ea.	5.00	\$2,000.00	\$10,000.00
18.0	Outdoor Chairs (at firepit)	Ea.	5.00	\$250.00	\$1,250.00
19.0	Stone Fire Pit	Ea.	1.00	\$6,000.00	\$6,000.00
20.0	Stage With Ramp	Ea.	1.00	\$15,000.00	\$15,000.00
21.0	Pavilion With Fan	Ea.	1.00	\$132,000.00	\$132,000.00
22.0	Restroom (Prefabricated)	Ea.	1.00	\$50,000.00	\$50,000.00
23.0	Storage Container - modified	Ea.	1.00	\$4,000.00	\$4,000.00
24.0	Entry Trellis	Ea.	1.00	\$30,000.00	\$30,000.00
25.0	Fencing	LF	73.00	\$27.00	\$1,971.00
26.0	Pallet Wall	LS	1.00	\$100.00	\$100.00
27.0	Handicap Parking decals & paint	LS	2.00	\$50.00	\$100.00
28.0	Mural Paintings - supplies only	LS	2.00	\$2,500.00	\$5,000.00
29.0	Electrical	LS	1.00	\$5,000.00	\$5,000.00
CONSTRUCTION SUBTOTAL					\$418,185.75
CONTINGENCY (10%)					\$41,818.58
TOTAL BUDGET					\$461,104.33

NOTES:



Stuttgart, Arkansas

Bicycle & Pedestrian Master Plan: September 2021

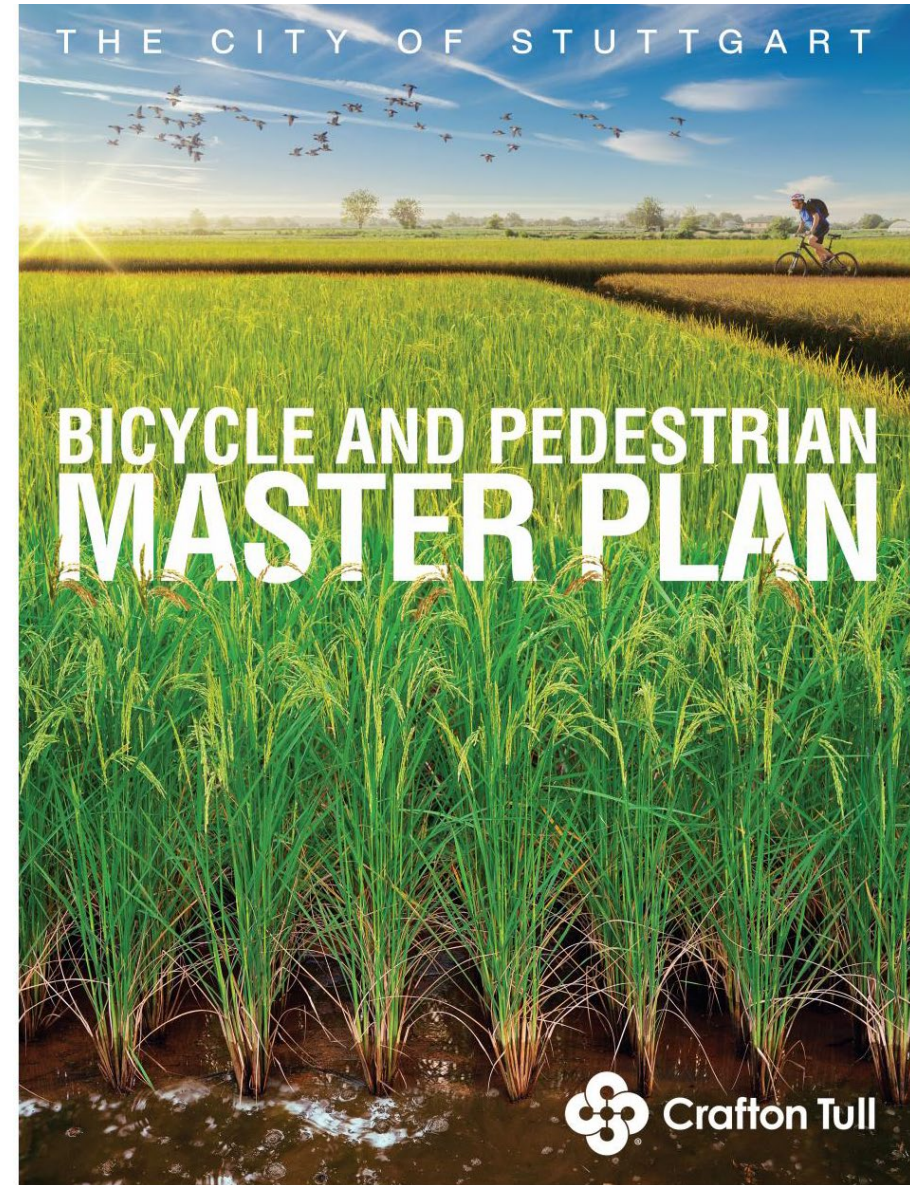


Health Outcomes

- How long people live
- How healthy they feel while alive

Arkansas County: #47 /75

Source: Robert Wood Johnson Foundation <http://www.countyhealthrankings.org/app/arkansas>



Questions and Discussion

