

# SCULPTURE MAINTENANCE RECORD

Accession Number:

Artist: Tom Gibbs

Title: SONG OF THE EARTH *Cast Bronze*

Location: UCA, Conway

Component/Materials:

Dimensions:

Date Examined: 11/22/05

By (name): Robby Burton

Date(s) of Maintenance Treatment: 11/22/05

By (name): Robby Burton

Page 1 of 2

**Previous Maintenance Treatment:**  none  maintained (last date) 9/16/04  
(Indicate method and materials used, if known)

## CONDITION SCULPTURE

**Discoloration** (staining, blanching, darkening . . . )  Fabric of Sculpture  Surface Finish or Applied Patina  
 Applied Coating(s)

*None*

**Graffiti**  Fabric of Sculpture  Surface Finish or Applied Patina  Applied Coating(s)

*None*

**Corrosion Activity**  Fabric of Sculpture  Surface Finish or Applied Patina  Applied Coating(s)

*None*

**Foreign Materials** (accretions, bird guano . . . )

*see diagram*

**Physical Damage** (worn, abraded, chipped, scratched ...)  Fabric of Sculpture  Surface Finish or Applied Patina  
 Applied Coating(s)

*None*

**Cracks/Splits**  Fabric of Sculpture  Surface Finish or Applied Patina  Applied Coating(s)

*Patina still looks good*

**Missing Parts**

*None*

**Other Problems**  Fabric of Sculpture  Surface Finish or Applied Patina  Applied Coating(s)

*Fountain is still out of order.*

**SCULPTURE MAINTENANCE RECORD**

Accession Number \_\_\_\_\_

Artist/Title: Tom Gibbs/SONG OF THE EARTH

Component: \_\_\_\_\_

Date of Record: \_\_\_\_\_

**CONDITION**

**PEDESTAL**

Looks Good. No visible problems

Graffiti

Accretions

Staining

Mechanical Damages

Cracks

Problems with Joints

Other Condition Problems

**MAINTENANCE STEPS**

Washed (Materials/Method)  Sculpture  Pedestal

Application of Protective Coating (Materials/Method)  Sculpture  Pedestal

Other Maintenance Treatment Steps (Materials/Method)  Sculpture  Pedestal

**ADDITIONAL CONDITION ISSUES / COMMENTS ON ONGOING CONDITION / RECOMMENDATIONS**

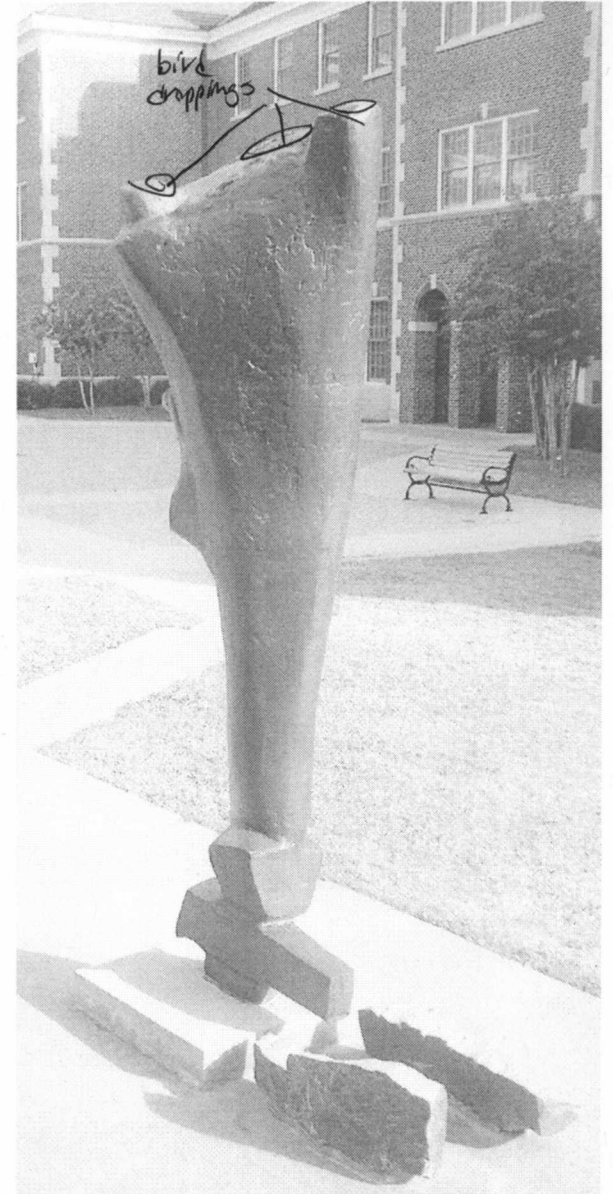
Fountain not working



North East



South East



South West

# SCULPTURE MAINTENANCE RECORD

Accession Number:

Artist: Tom Gibbs

Title: SONG OF THE EARTH *Painted Steel*

Location: UCA, Conway

Component/Materials:

Dimensions:

Date Examined: 11/22/05

By (name): Robby Burton

Date(s) of Maintenance Treatment: 11/22/05

By (name): Robby Burton

Page 1 of 2

**Previous Maintenance Treatment:**  none  maintained (last date) 9/16/04  
(Indicate method and materials used, if known)

## CONDITION SCULPTURE

**Discoloration** (staining, blanching, darkening . . .)  Fabric of Sculpture  Surface Finish or Applied Patina  
 Applied Coating(s)

**Graffiti**  Fabric of Sculpture  Surface Finish or Applied Patina  Applied Coating(s)

*None*

**Corrosion Activity**  Fabric of Sculpture  Surface Finish or Applied Patina  Applied Coating(s)

*chipped paint, rusting under chip*  
~~None~~

**Foreign Materials** (accretions, bird guano . . .)

*grass, bird droppings*

**Physical Damage** (worn, abraded, chipped, scratched ...)  Fabric of Sculpture  Surface Finish or Applied Patina  
 Applied Coating(s)

*(see diagram)*  
*chipped paint*

**Cracks/Splits**  Fabric of Sculpture  Surface Finish or Applied Patina  Applied Coating(s)

*None*

**Missing Parts**

*None*

**Other Problems**  Fabric of Sculpture  Surface Finish or Applied Patina  Applied Coating(s)

**SCULPTURE MAINTENANCE RECORD**

Accession Number \_\_\_\_\_

Artist/Title: Tom Gibbs/SONG OF THE EARTH

Component: \_\_\_\_\_

Date of Record: 11/22/05

**CONDITION**

**PEDESTAL**

looks Good

Graffiti

Accretions

Staining

Mechanical Damages

Cracks

Problems with Joints

Other Condition Problems

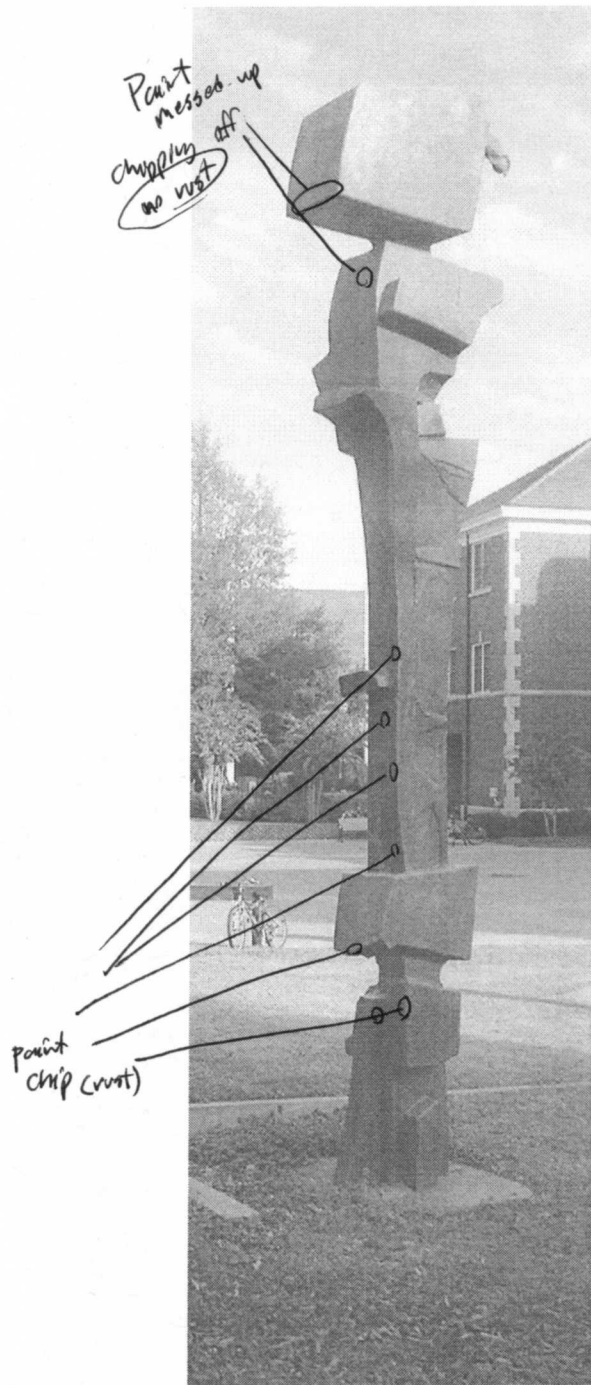
**MAINTENANCE STEPS**

Washed (Materials/Method)  Sculpture  Pedestal

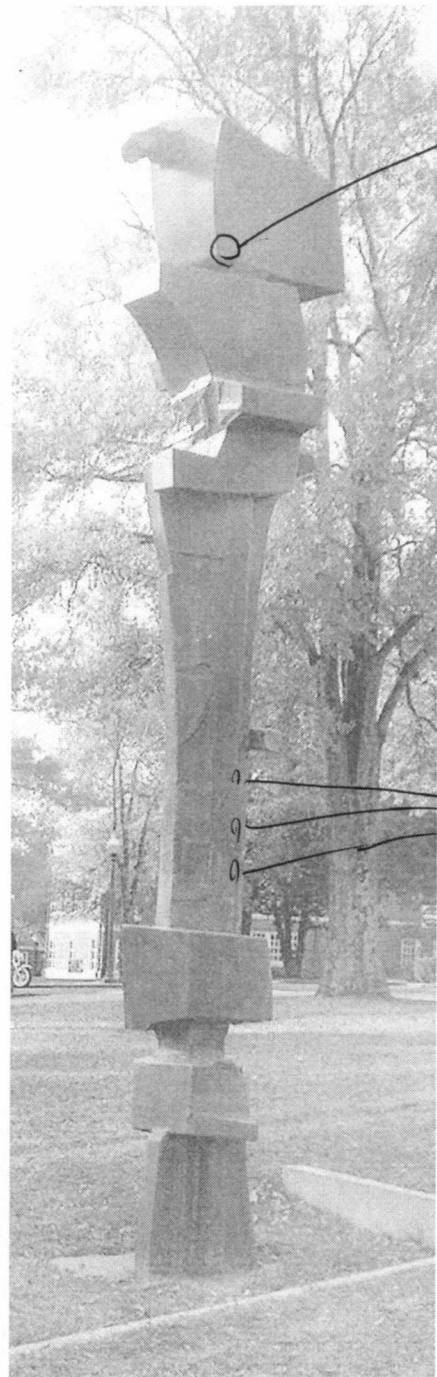
Application of Protective Coating (Materials/Method)  Sculpture  Pedestal

Other Maintenance Treatment Steps (Materials/Method)  Sculpture  Pedestal

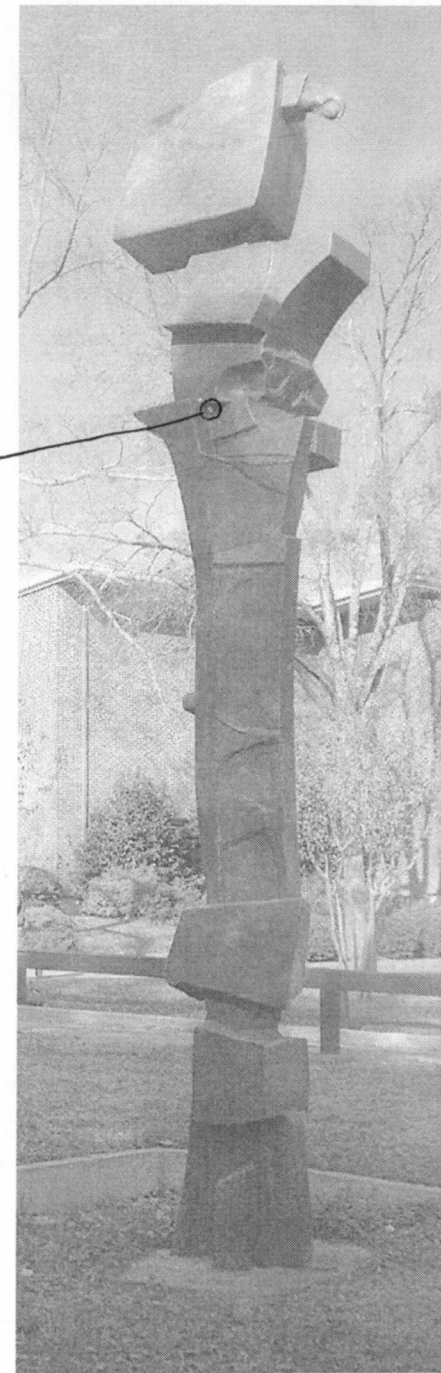
**ADDITIONAL CONDITION ISSUES / COMMENTS ON ONGOING CONDITION / RECOMMENDATIONS**



South



North East



South East

# SCULPTURE MAINTENANCE RECORD

Accession Number:

Artist: Tom Gibbs

Title: SONG OF THE EARTH (Granite wall)

Location: UCA, Conway

Component/Materials:

Dimensions:

Date Examined: 11/20/95

By (name): Roddy Burton

Date(s) of Maintenance Treatment: 11/20/05

By (name): Roddy Burton

Page 1 of 2

**Previous Maintenance Treatment:**  none  maintained (last date) 9/16/04  
(Indicate method and materials used, if known)

## CONDITION SCULPTURE

**Discoloration** (staining, blanching, darkening . . .)  Fabric of Sculpture  Surface Finish or Applied Patina  
*see diagram*  Applied Coating(s)

**Graffiti**  Fabric of Sculpture  Surface Finish or Applied Patina  Applied Coating(s)

**Corrosion Activity**  Fabric of Sculpture  Surface Finish or Applied Patina  Applied Coating(s)

**Foreign Materials** (accretions, bird guano . . .)

**Physical Damage** (worn, abraded, chipped, scratched . . .)  Fabric of Sculpture  Surface Finish or Applied Patina  
*• large scrape. This has been there since installation of the work*  Applied Coating(s)

*• scratches at bottom of wall. Probably caused by weed eater.*

**Cracks/Splits**  Fabric of Sculpture  Surface Finish or Applied Patina  Applied Coating(s)

**Missing Parts**

**Other Problems**  Fabric of Sculpture  Surface Finish or Applied Patina  Applied Coating(s)

**SCULPTURE MAINTENANCE RECORD**

Accession Number \_\_\_\_\_

Artist/Title: Tom Gibbs/SONG OF THE EARTH

Component: \_\_\_\_\_

Date of Record: 11/20/05

**CONDITION**

**PEDESTAL**

see diagram retaining wall seems to moving. there is also some separation on the stairs.

Graffiti

Accretions

Staining

Mechanical Damages

Cracks

Problems with Joints

Other Condition Problems

**MAINTENANCE STEPS**

Washed (Materials/Method)  Sculpture  Pedestal

Application of Protective Coating (Materials/Method)  Sculpture  Pedestal

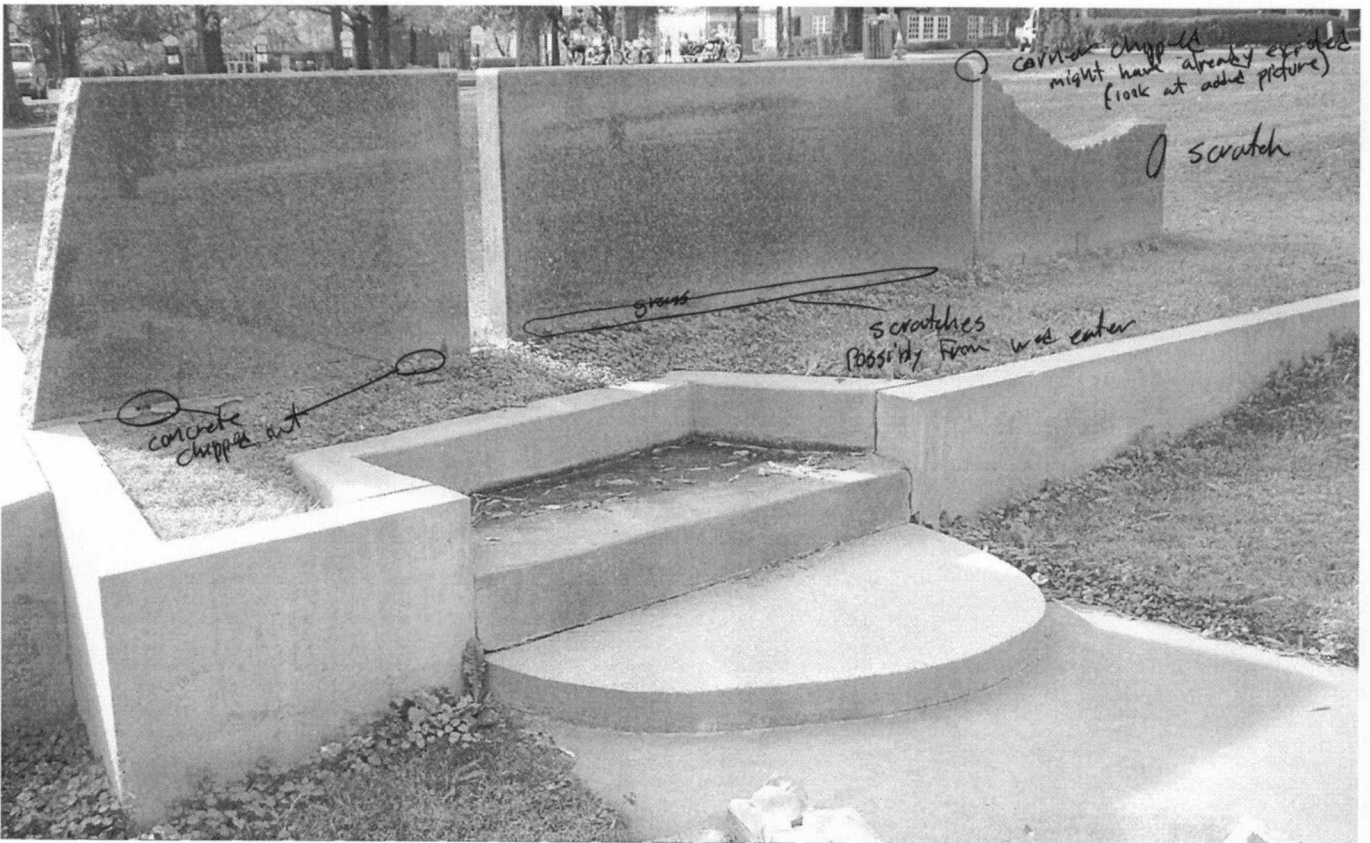
Other Maintenance Treatment Steps (Materials/Method)  Sculpture  Pedestal

**ADDITIONAL CONDITION ISSUES / COMMENTS ON ONGOING CONDITION / RECOMMENDATIONS**

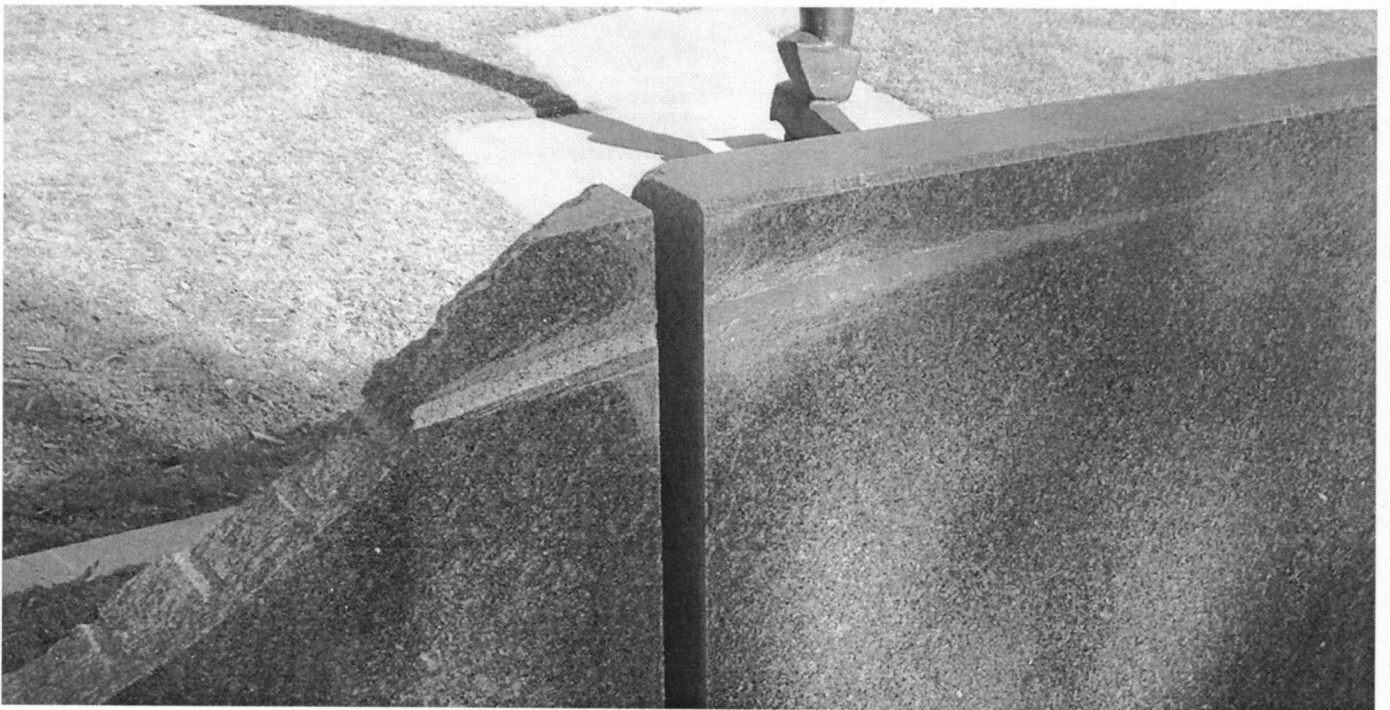
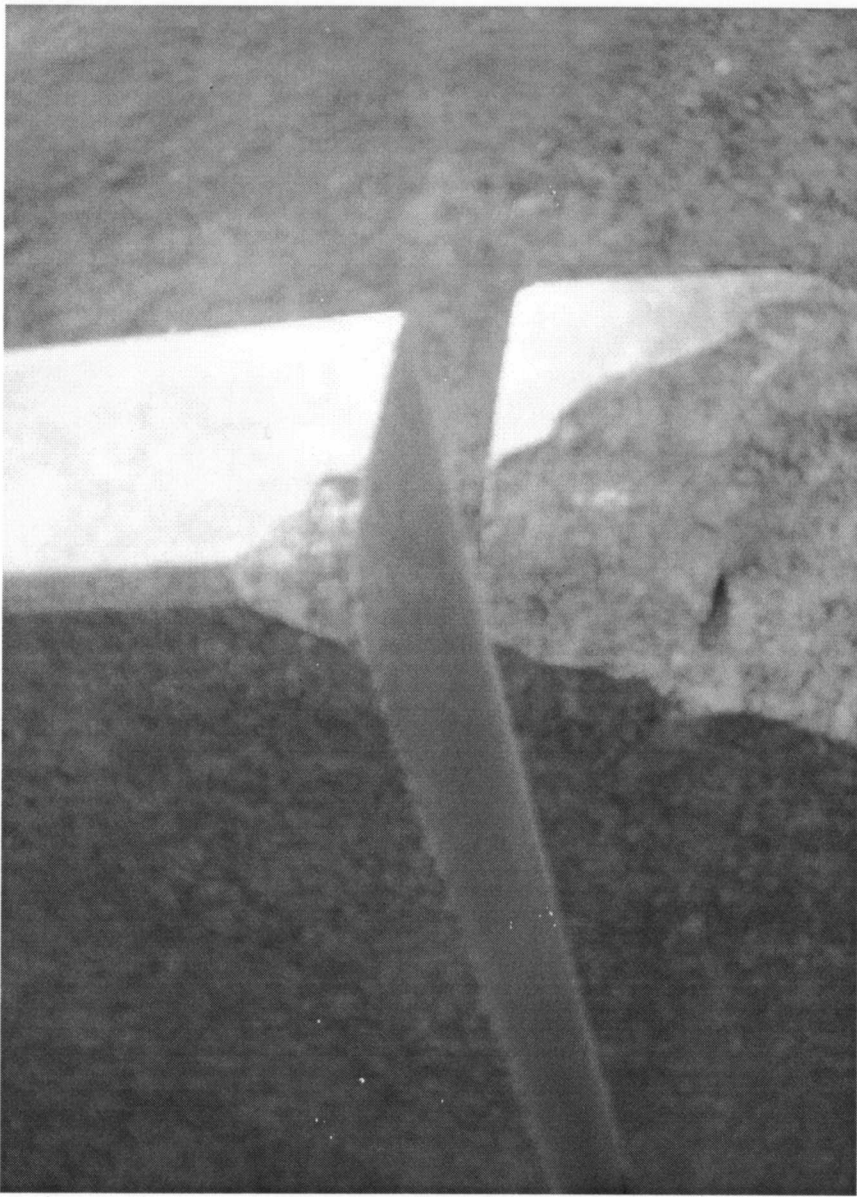


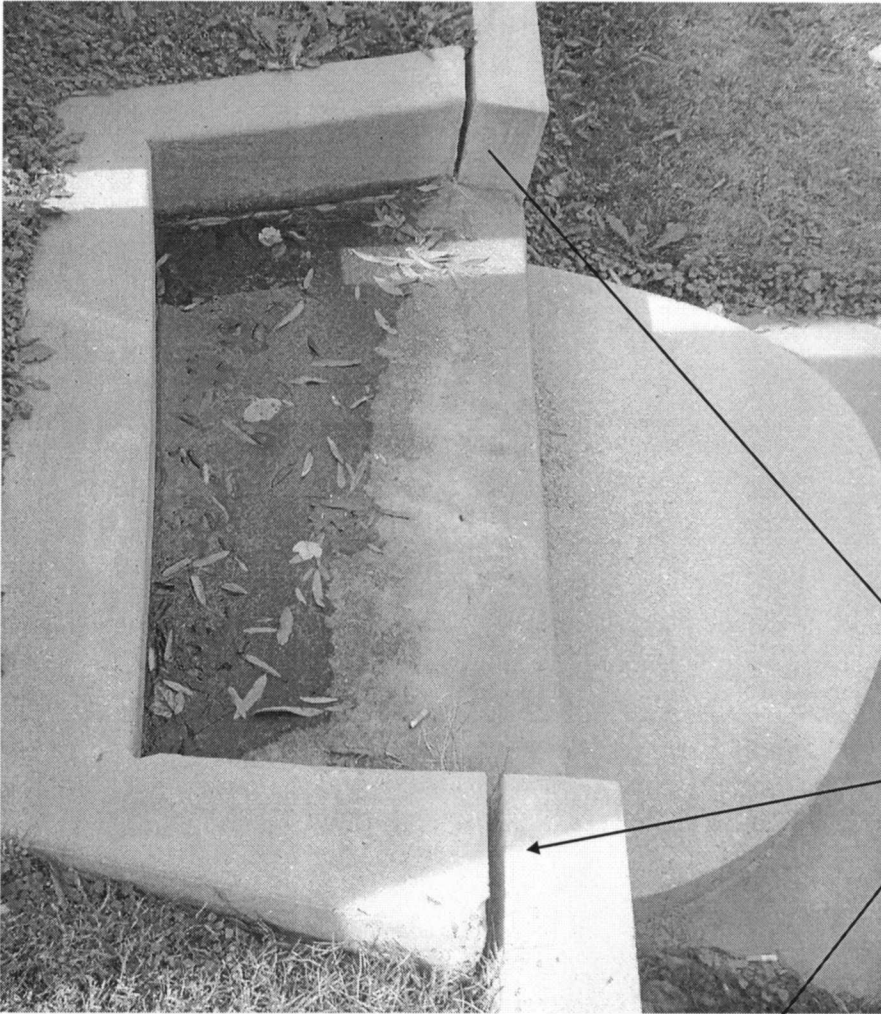


South



North





Concrete  
Separation

Nov. 2005

