

Division of Academic Affairs
 Provost and Executive Vice President
Patricia S. Poulter

College Deans

Arts, Humanities, and Social Sciences ►
Tom Williams

Business ►
Michael Hargis

Education ►
Victoria Groves-Scott

Health and Behavioral Sciences ►
Nancy Reese

Natural Sciences and Mathematics ►
Stephen Addison

Associate Vice President
 Center for Global Learning and
 Engagement ►
Phillip Bailey

Associate Vice President
 Outreach and Community Engagement ►
Shaneil Ealy

Dean
 Graduate School
Angela T. Barlow

Reporting areas:

Graduate School

- ♦ Graduate Council
- ♦ Internal Grant/Research Funds

Office of Research and Sponsored Programs

Joy Richey, Director

- ♦ Compliance
- ♦ External Grants
- ♦ Contracts

Dean
 Honors College
Patricia Smith

Reporting areas:

Schedler Honors College
 Honors in the Major
 University Scholars Program

Associate Provost
 Institutional Effectiveness
Jonathan A. Glenn

Reporting areas:

Institutional Research
Amber Hall, Director

Academic Assessment and General Education
Jacob Held, Assistant Provost

SCES Admin and Assessment Support
Alyson McEntire, Assessment Research Associate

Torreyson Library ►
R. Dean Covington, Director

University Testing
Courtney Dycus, Director

Other responsibilities:

- ♦ ADHE Liaison
- ♦ HLC Liaison (ALO)
- ♦ Academic Bulletins
- ♦ Emergency Management AA
- ♦ Banner Team (chair)
- ♦ DSIA Oversight Group (chair)
- ♦ Strategic Planning Committee (chair)

Associate Provost
 Academic Success
Kurt A. Boniecki

Reporting areas:

Office of Student Success ►
Julia Winden Fey, Director

Center for Excellence in Teaching and Academic Leadership ►
Amy Hawkins, Assistant Provost

Learning Communities ►
Jayne Millsap Stone, Director

Department of Student Transitions
Leslie Gomes, Chair

Other responsibilities:

- ♦ Grade appeals
- ♦ Sabbatical Leave Review Committee (chair)
- ♦ Council for Student Success (co-chair)
- ♦ Undergraduate Council (chair)
- ♦ UCA Online: Policy and Curriculum Support

Associate Vice President
 Enrollment Management
Kevin P. Thomas

Reporting areas:

Admissions/Enrollment Services ►
Courtney Bryant, Director

Academic Advising Center ►
Leigh Ann DenHartog, Director

Athletic Academic Advising ►
Scott Brezee, Director

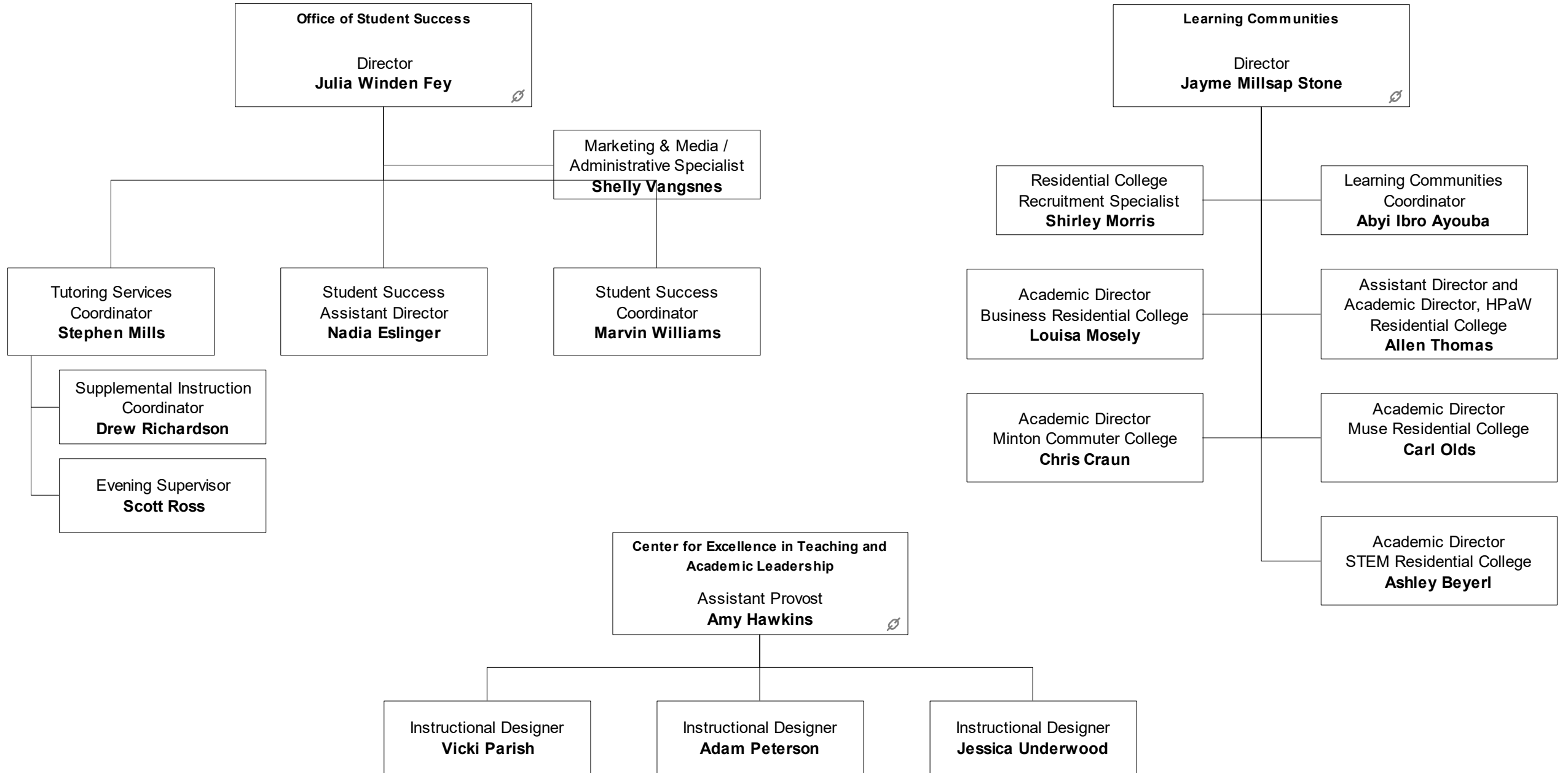
Student Financial Aid ►
Cheryl Lyons, Director

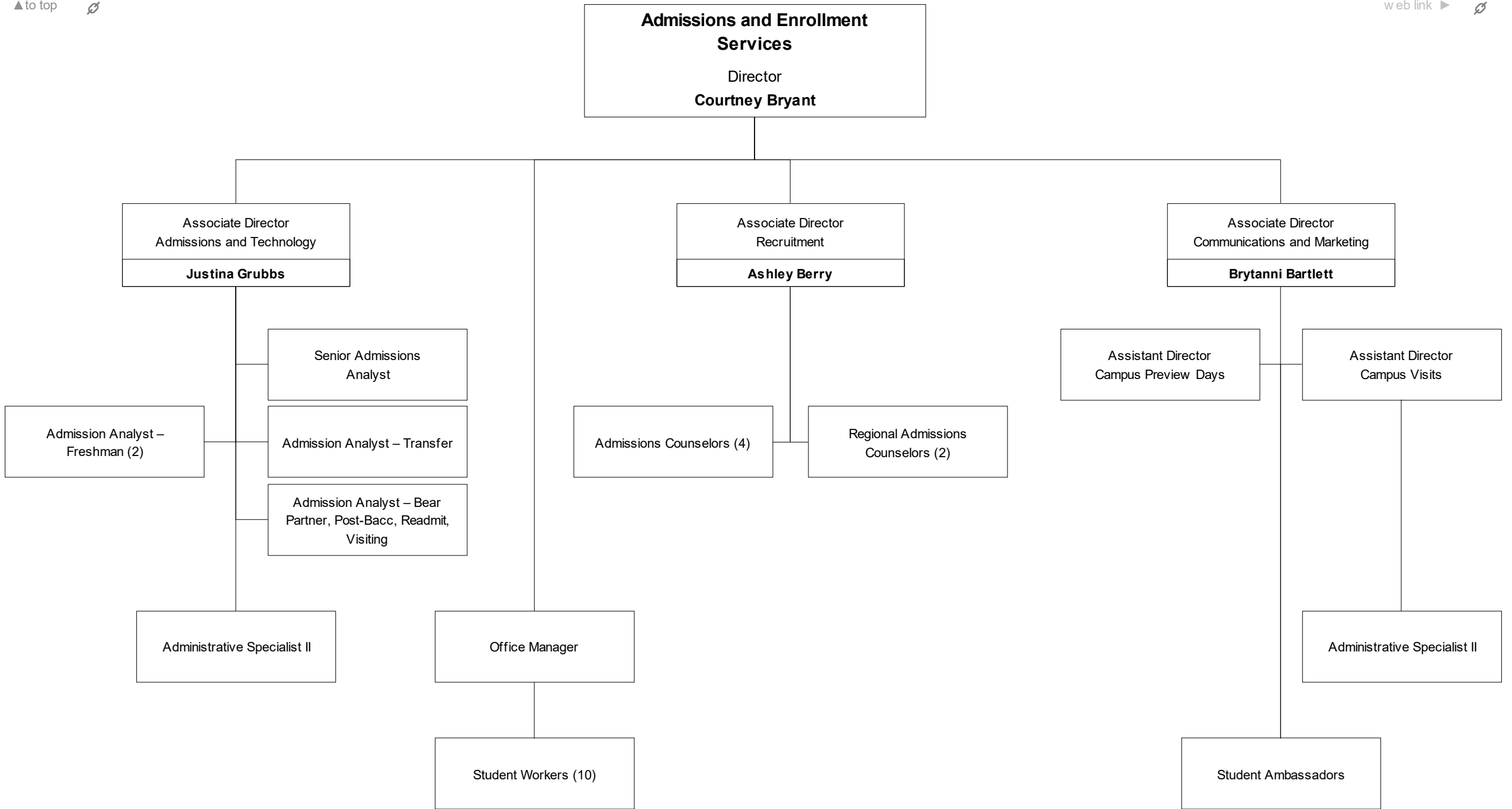
Office of the Registrar ►
Vicky Summers, Registrar

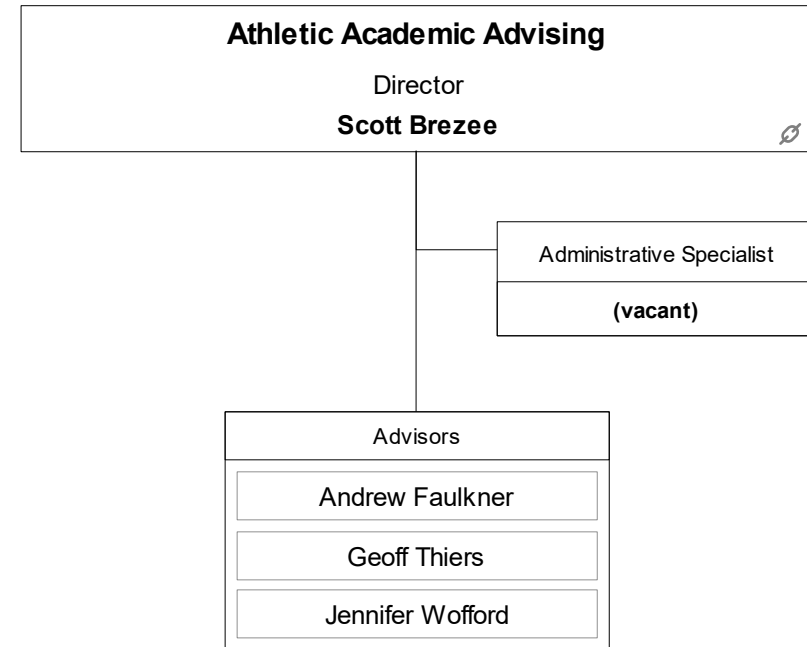
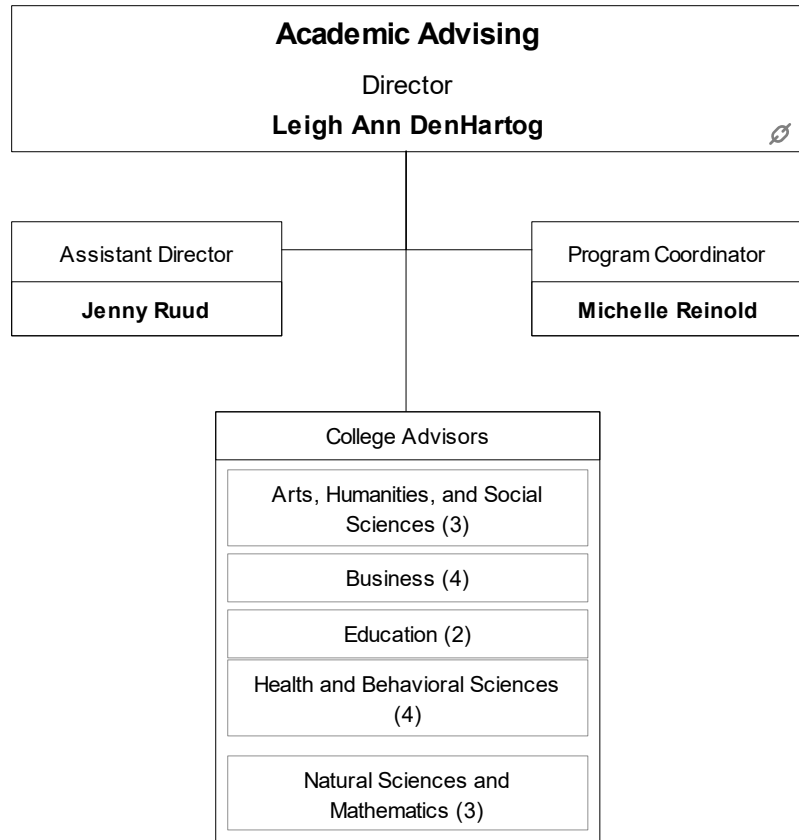
Transfer Services ►
Brian Corbin, Director

Other responsibilities:

- ♦ University Admissions Committee (chair)
- ♦ Council for Student Success (co-chair)
- ♦ UCA Online: Recruitment and Enrollment







College of Arts, Humanities, and Social Sciences
 Dean
Tom Williams

Associate Dean
Gayle Seymour
Associate Dean
(vacant)

UCA Public Appearances
Amanda Horton , Director
Oxford American
Sara Lewis , Executive Director

Department of Art and Design
Bryan Massey , Chair
<u>Programs of study:</u>
♦ BA, Art – Art Education, Art History, Fine Art
♦ BA/BS Interior Design
♦ BFA, Studio Art – Ceramics, Graphic Design, Painting, Photography, Printmaking, Sculpture
<u>Organizations/programs:</u>
♦ Baum Gallery of Fine Art
♦ Black Box Student Gallery

Department of English
Ty Hawkins , Chair
<u>Programs of study:</u>
♦ BA, English
♦ BA, English with teacher licensure
♦ MA, English
<u>Publication:</u>
♦ <i>Slant: A Journal of Poetry</i>

Department of History
Wendy Lucas , Chair
<u>Programs of study:</u>
♦ BA/BS, History
♦ BA, African/African-American Studies
♦ BSE, Social Studies
♦ MA, History
♦ Minors: Asian Studies, Southern and Arkansas Studies
<u>Other program:</u>
♦ History Day Arkansas

Department of Music
Stephen Plate , Chair
<u>Programs of study:</u>
♦ BA, Music
♦ BM, Music – Composition, Performance, Piano Pedagogy
♦ BME, Music Education – Vocal, Piano, Instrumental
♦ GC, Music (Professional Studies)
♦ MM, Music – Performance, Conducting, Theory, Education
<u>Organizations/programs:</u>
♦ Community Music Outreach Division
♦ Conway Symphony Orchestra
♦ UCA Marching Band

Department of Political Science
Clay Arnold , Chair
<u>Programs of study:</u>
♦ BA/BS, Political Science
♦ BA/BS, Public Administration
♦ BA, International Studies
♦ Minor: Legal Studies
<u>Other program/publication:</u>
♦ Model United Nations
♦ <i>Midsouth Political Science Review</i>

School of Communication
Donna Stephens , Director
<u>Programs of study:</u>
♦ BA/BS, Communication
♦ BA/BS, Journalism – Broadcast, Online, Print
♦ BA/BS, Public Relations
♦ BA, Writing
<u>Organizations/programs:</u>
♦ Channel 6
♦ <i>The Echo, The Scroll</i>
♦ UCA Forensics
♦ First-Year Writing Program
♦ Principles of Communication Program
♦ Center for Writing and Communication

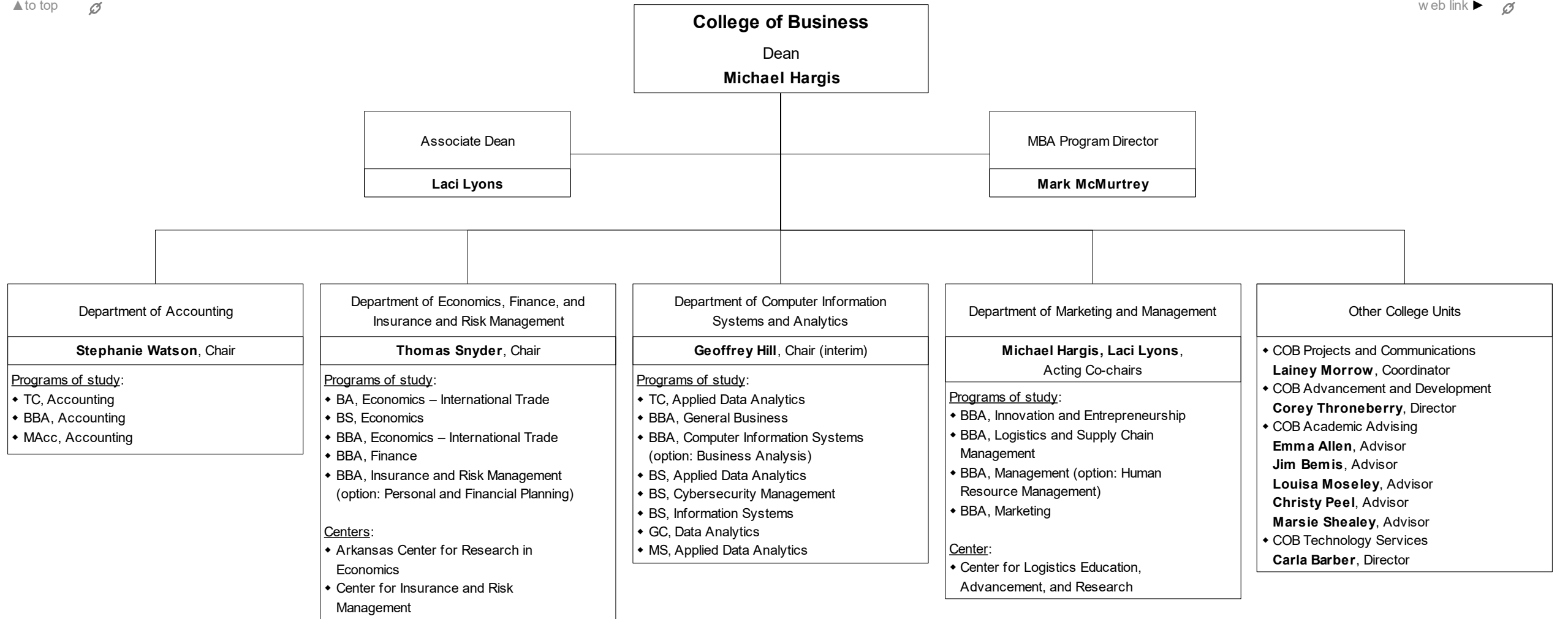
Department of Film, Theatre, and Creative Writing
Shauna Meador , Chair
<u>Programs of study:</u>
♦ BA, Creative Writing
♦ BA/BS, Film
♦ BA/BS, Theatre
♦ MFA, Creative Writing
♦ MFA, Film
<u>Organizations/programs/pubs:</u>
♦ Arkansas Shakespeare Theatre
♦ Arkatext Literary Festival
♦ C. D. Wright Women Writers Conference
♦ UCA Film Festival
♦ Youth Theatre of Central Arkansas
♦ <i>The Vortex, Arkana</i>

Department of Languages, Linguistics, Literatures, and Cultures
Katelyn Knox , Chair (interim)
<u>Programs of study:</u>
♦ BA, Linguistics – Language, TESOL, Computer Science, General Linguistics
♦ BA, Modern Languages – Chinese, French, Spanish
♦ MA, Spanish
♦ Minors: German, Latin American and Latino Studies, TESOL
♦ Intensive English Program
<u>Other program:</u>
♦ Community Language School

Department of Philosophy and Religion
Taine Duncan , Chair
<u>Programs of study:</u>
♦ BA/BS, Philosophy
♦ BA/BS, Religious Studies
♦ Minor: Gender Studies

Department of Sociology, Criminology, and Anthropology
Edward Powers , Chair
<u>Programs of study:</u>
♦ BA/BS, Anthropology
♦ BA/BS, Criminology
♦ BA/BS, Sociology
<u>Organizations/publications:</u>
♦ Jamie C. Brandon Center for Archaeological Research
♦ <i>Journal of Undergraduate Research in Anthropology</i> (JURA)

Other College Units/Programs
<u>Programs of study:</u>
♦ AA, General Education
♦ BGS, Bachelor of General Studies
<u>Institutes/centers:</u>
♦ Asian Studies Development Program
♦ Regional Center
<u>Other programs/publications:</u>
♦ Arts/Humanities/Social Sciences Fair
♦ Quoined Corner: CAHSS Student Research and Creativity Conference
♦ Student Journal (online)





College of Education
Dean
Victoria Groves-Scott

Associate Dean
Michael Mills

Director of Assessment and Accreditation
Donna Wake

Distinguished Education Equity Fellow
Candice Barnes

Department of Elementary, Literacy, and Special Education

Janet Filer, Chair

Programs of study:

- ♦ BSE, Elementary Education
- ♦ BSE, Special Education
- ♦ GC, Dyslexia
- ♦ GC, Integrated Early Childhood Education (B-K)
- ♦ GC, Special Education
- ♦ MSE, Literacy with Dyslexia Endorsement
- ♦ MAT, Special Education
- ♦ MSE, Special Education
- ♦ Special Education Minor (non-licensure)

Centers/Institutes:

- ♦ Child Study Center
- ♦ Mashburn Institute

Department of Leadership Studies

Louis Nadelson, Chair

Programs of study:

- ♦ GC, Computer Science Teaching and Learning
- ♦ GC, Media Design and Development
- ♦ GC, Online Teaching and Learning
- ♦ MS, College Student Personnel Administration
- ♦ MS, Instructional Technology
- ♦ MS, Library Media and Information Technologies
- ♦ MS, School Counseling
- ♦ MS, School Leadership, Management, and Administration
- ♦ PMC, District-Level Administration
- ♦ PMC, Building Administration
- ♦ PMC, Curriculum Administration
- ♦ PMC, Special-Education Program Administration
- ♦ PMC, Gifted and Talented Program Administration
- ♦ EdS, Educational Leadership
- ♦ PhD, Leadership for Inclusion and Equity

Department of Teaching and Learning

Deborah Dailey, Chair

Programs of study:

- ♦ BSE, Middle-Level Education
- ♦ GC, Gifted and Talented Education
- ♦ MAT, Teaching
- ♦ MSE, Advanced Studies in Teacher Leadership
- ♦ EdS, Digital Age Teaching and Learning

Undergraduate Minors:

- ♦ Education for Community Engagement (non-licensure)
- ♦ Teaching and Learning (professional education courses for students in a Secondary Education teacher licensure program)
- ♦ STEM Education (STEMteach)

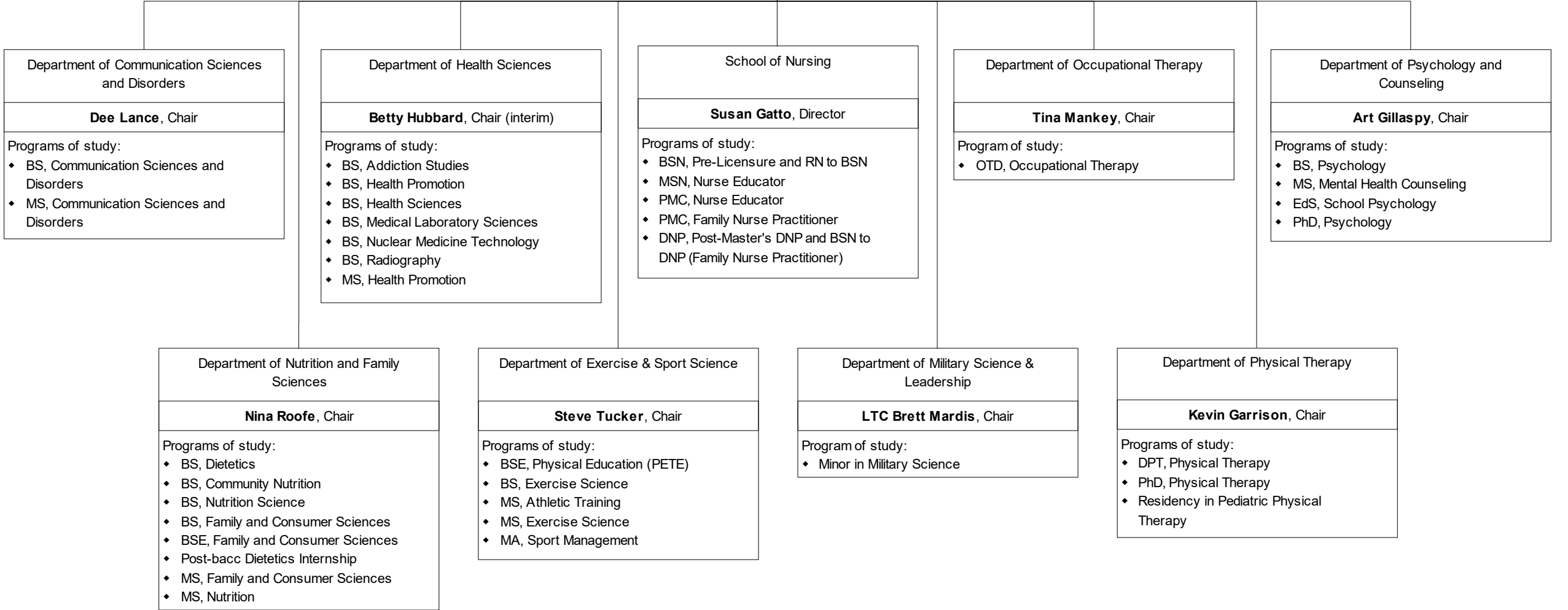
Other College Units

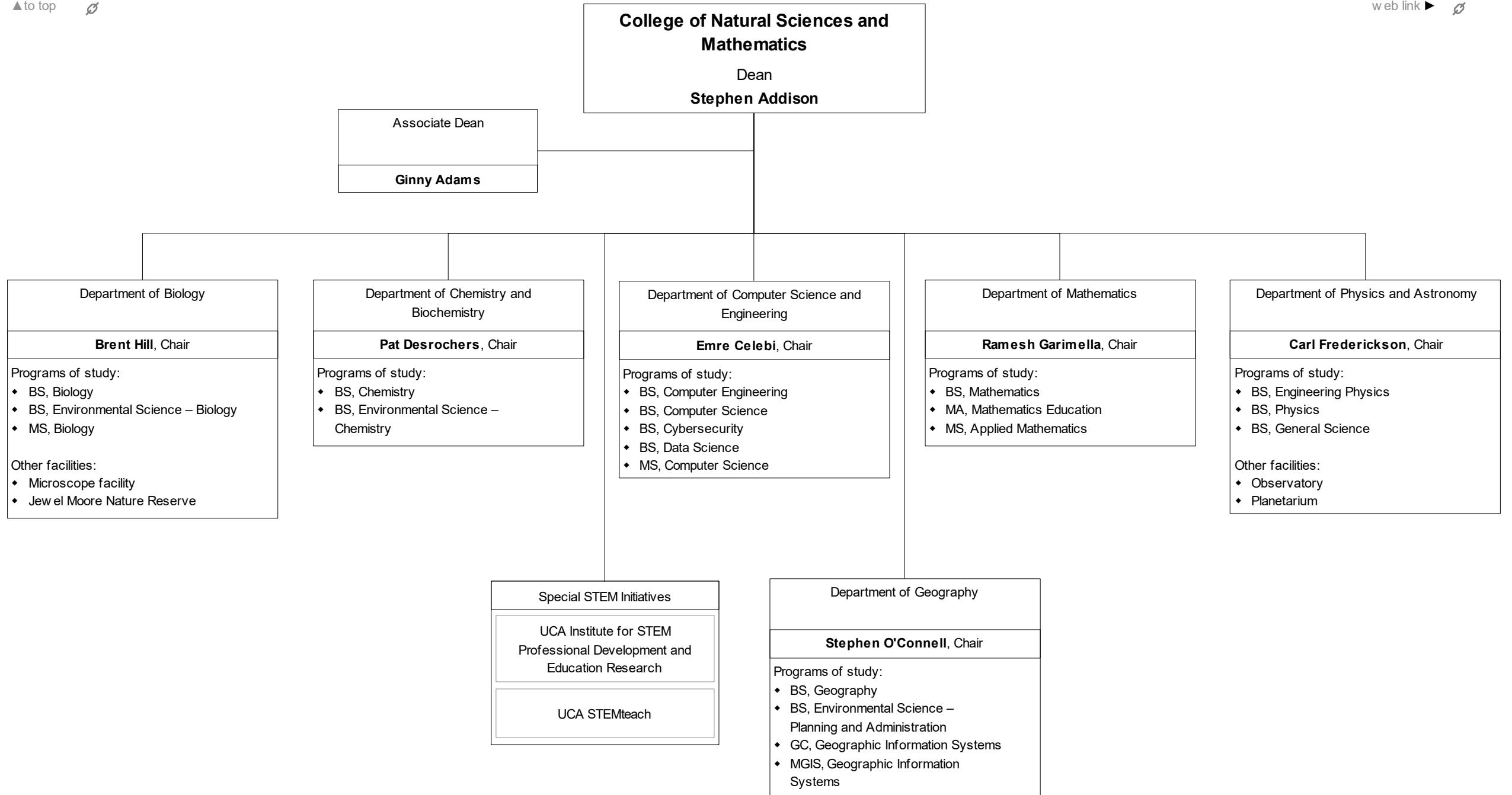
- ♦ Candidate Services
Gary Bunn, Director
- ♦ Technology Learning Center
Ashley Cooksey, Director
- ♦ Reading Center
- ♦ Academic Advising
Whitney Johnson, Advisor
Aniaya Worth, Advisor

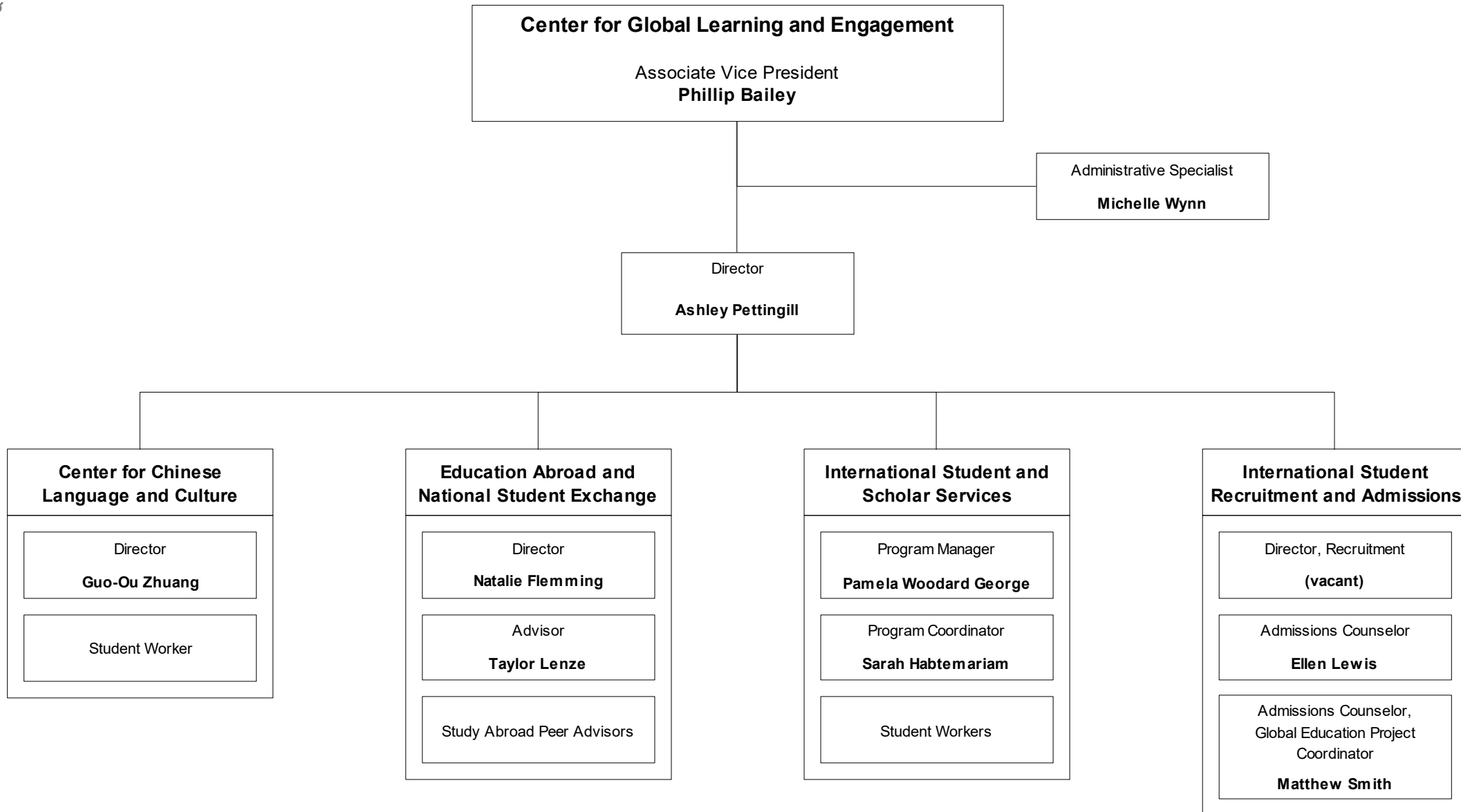


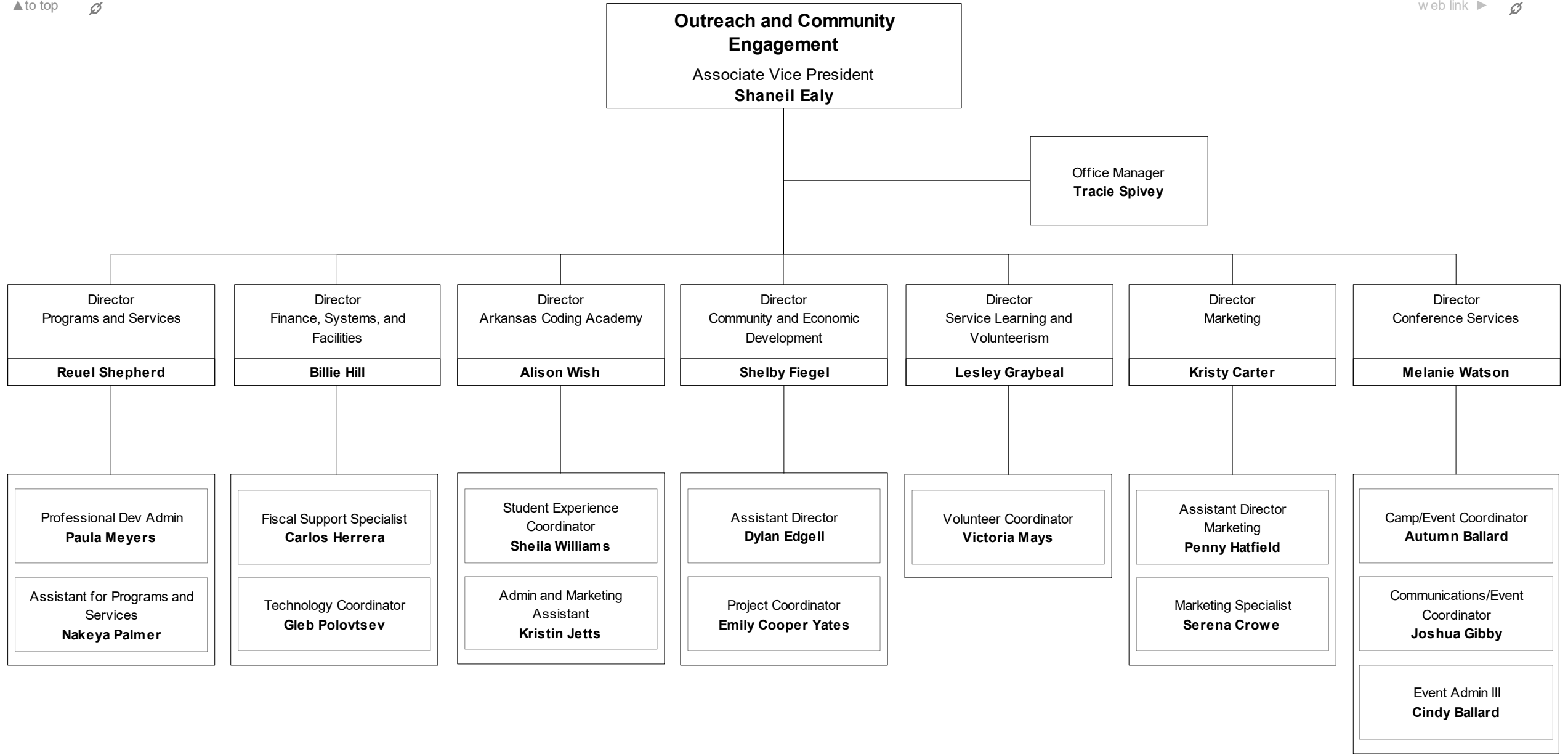
**College of Health and Behavioral
Sciences**
Dean
Nancy Reese

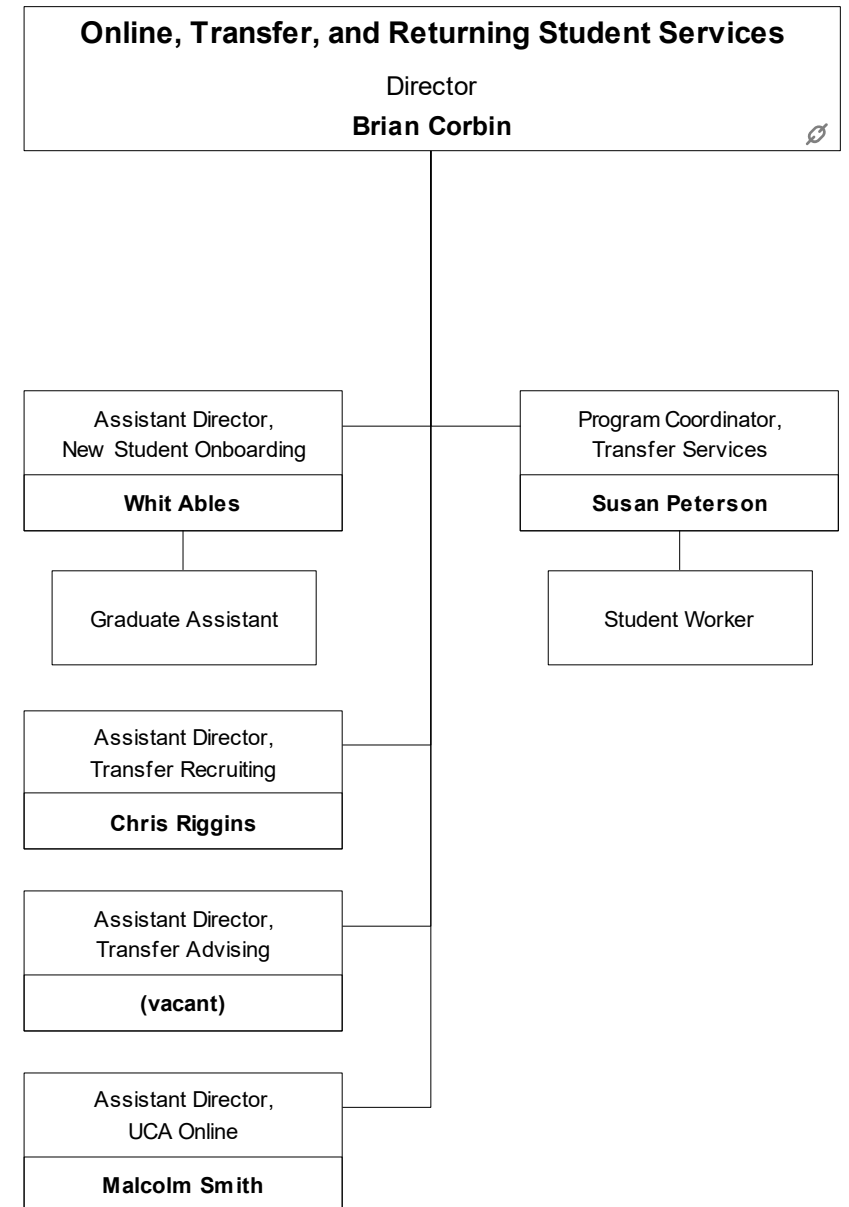
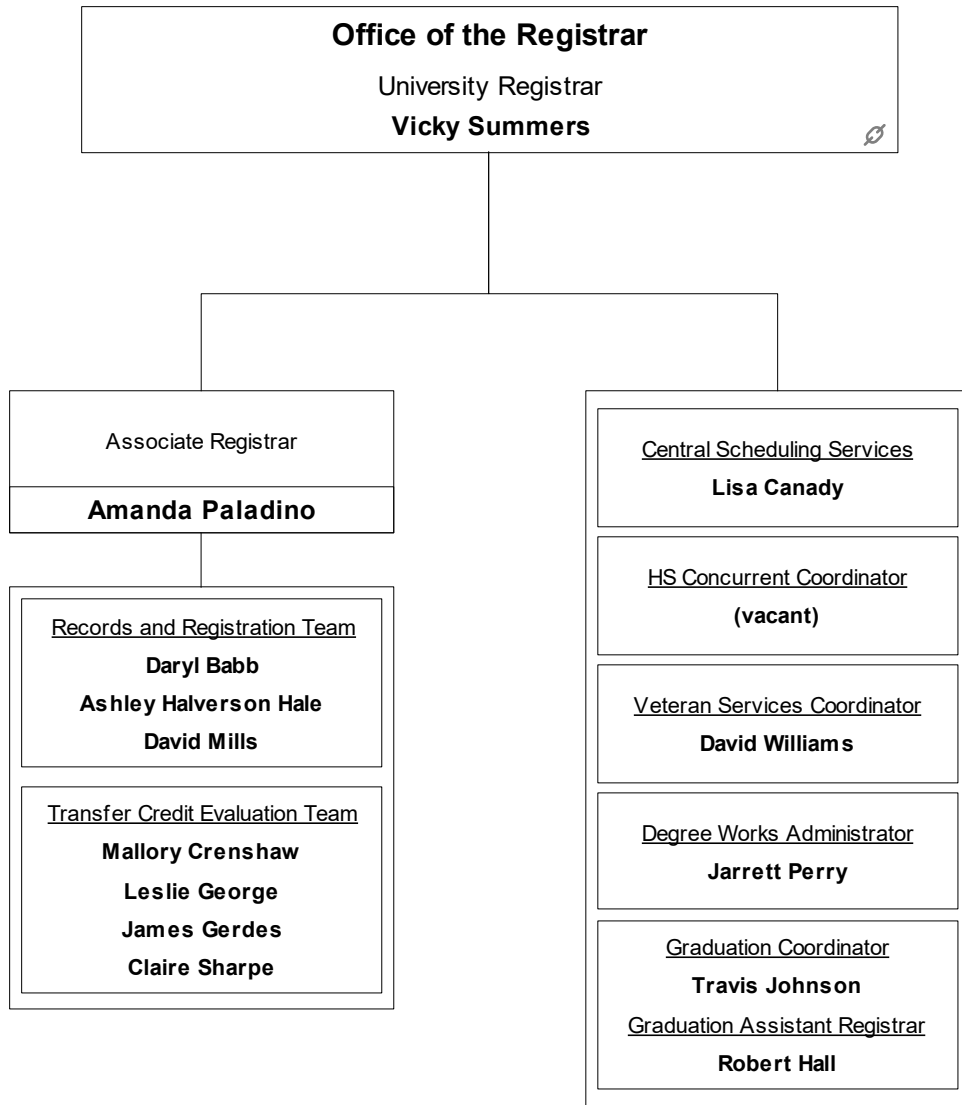
Associate Dean
Jacquie Rainey

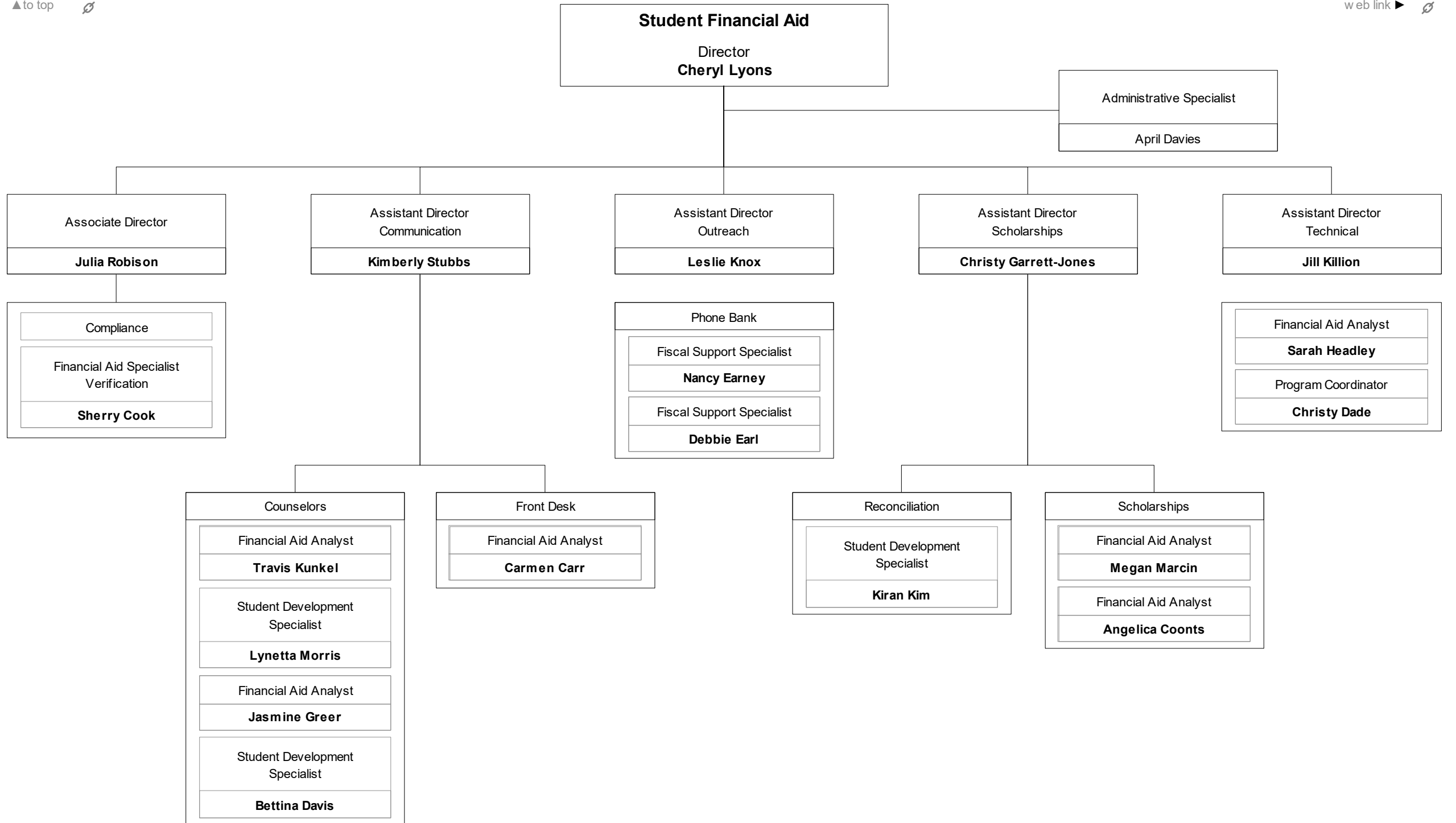


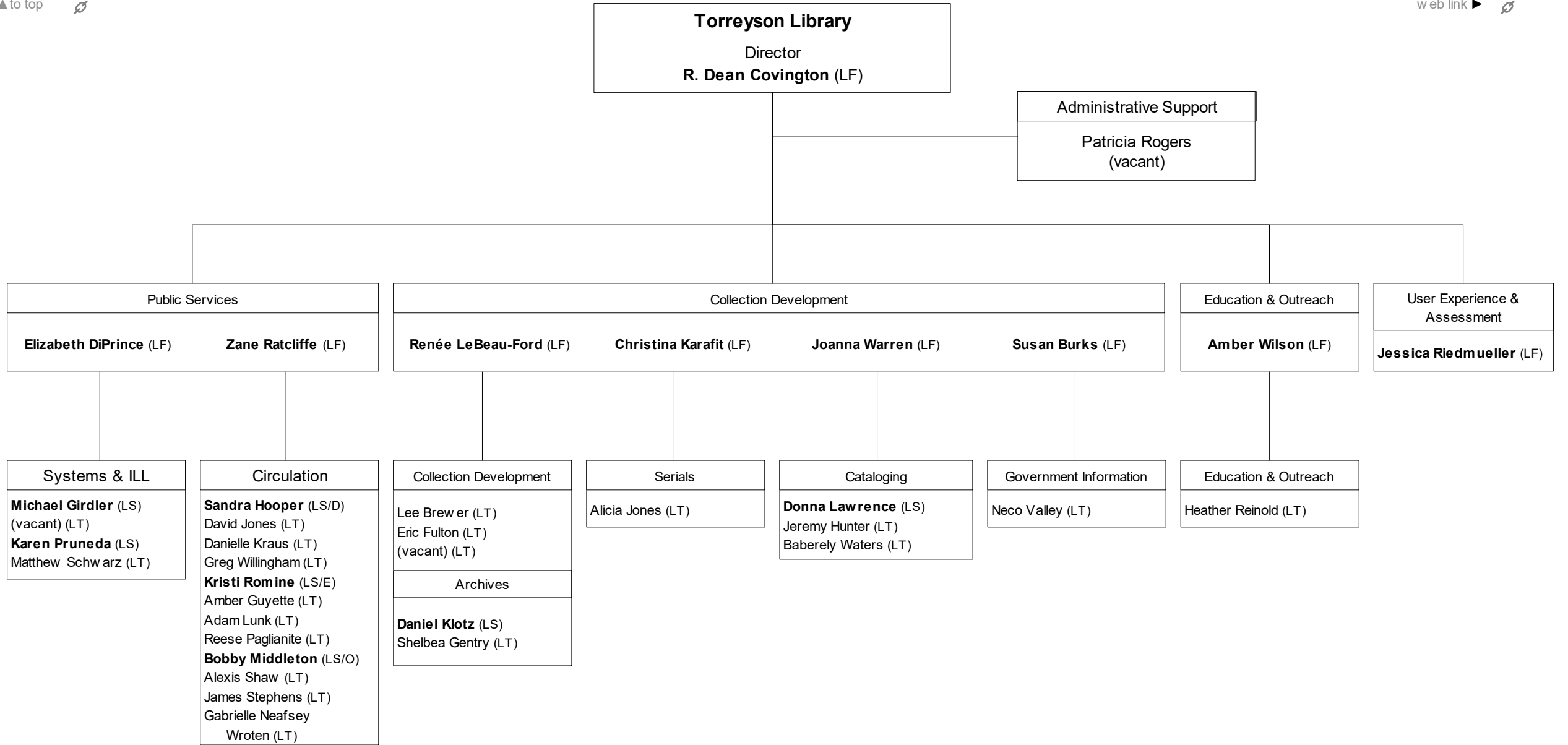












Legend:

LF = Library Faculty

LS = Library Supervisor

LT = Library Technician