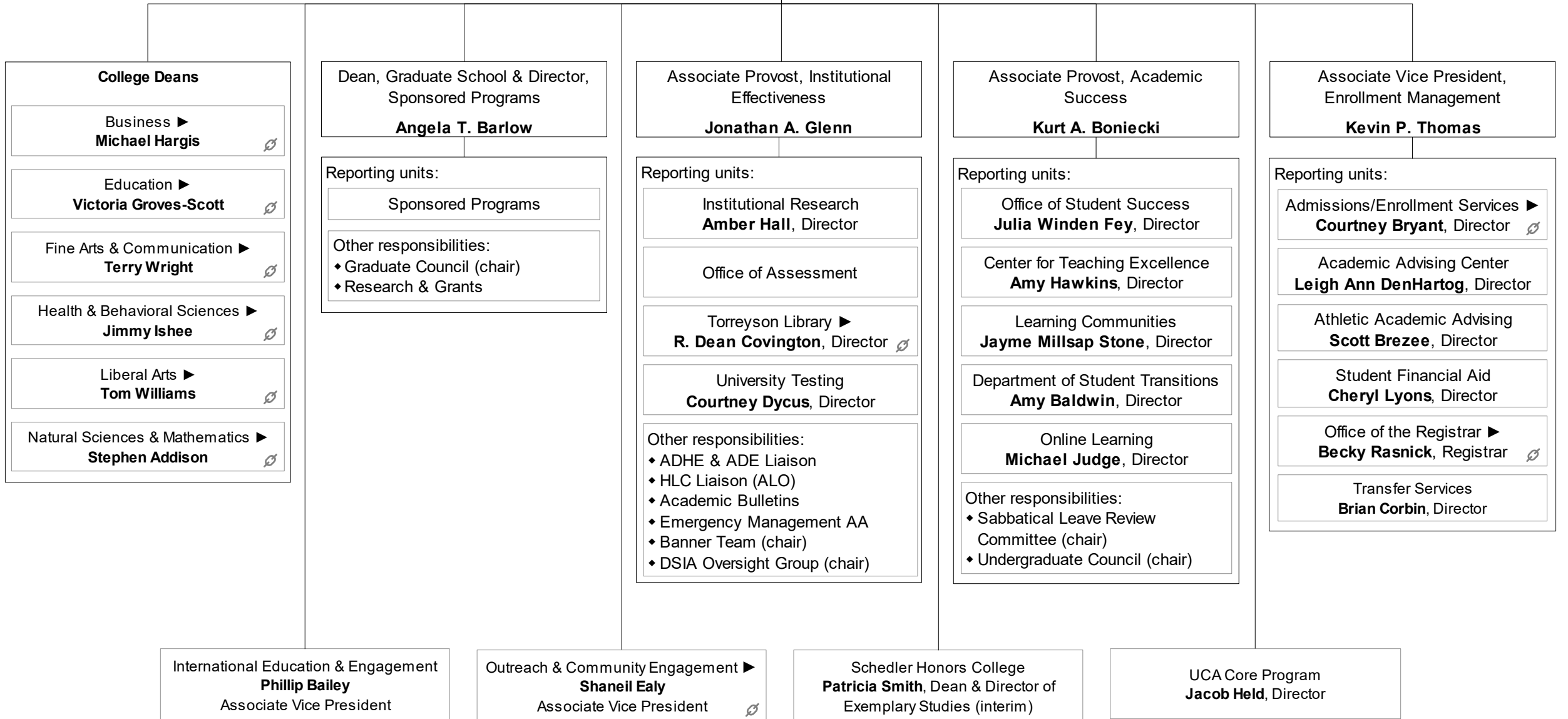
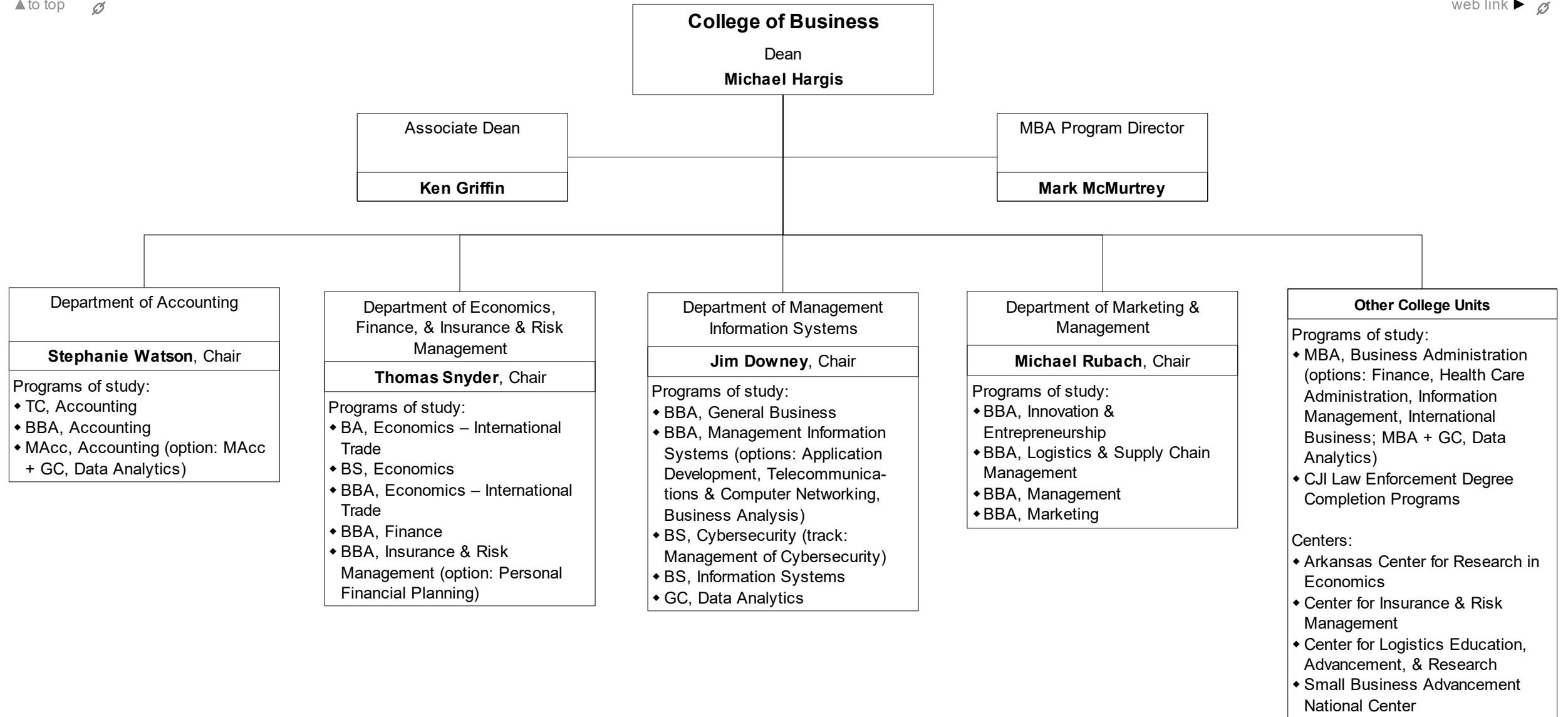
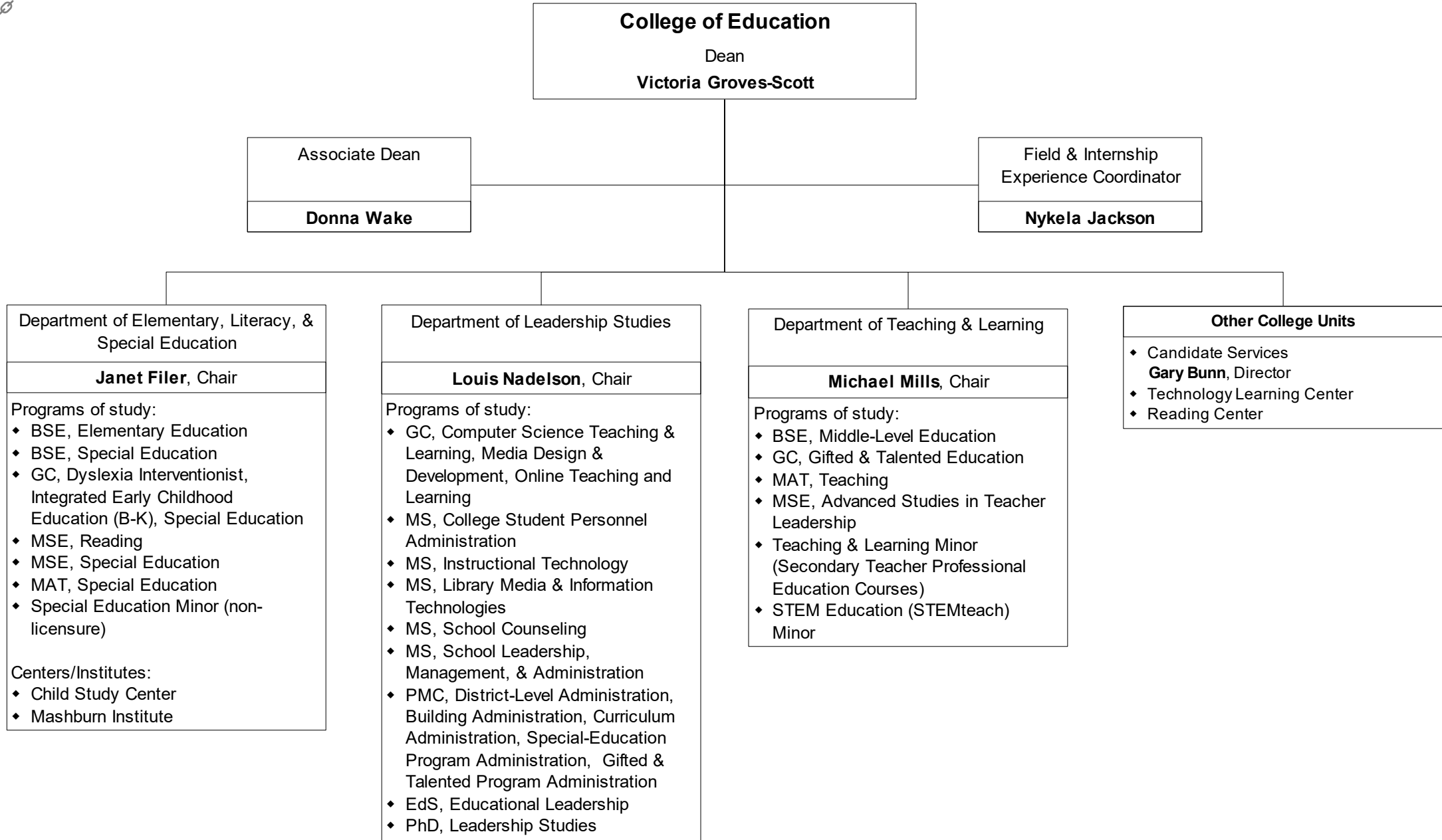
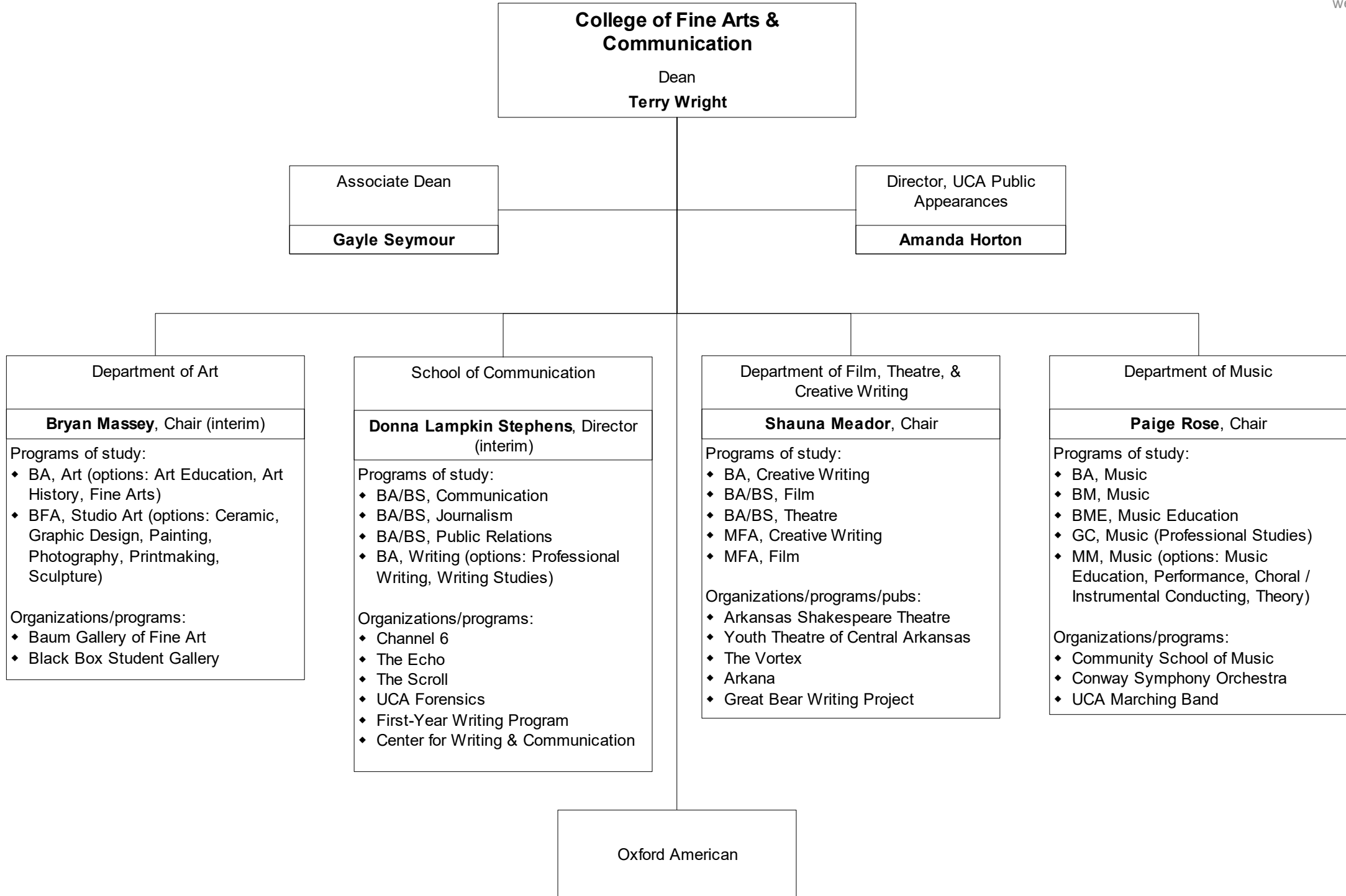


Division of Academic Affairs
 Provost and Executive Vice President
 Patricia S. Poulter









College of Health & Behavioral Sciences
Dean
Jimmy Ishee

Associate Dean
Jacquie Rainey

Department of Communication Sciences & Disorders
Dee Lance, Chair

Programs of study:

- ◆ BS, Communication Sciences & Disorders
- ◆ MS, Communication Sciences & Disorders

Department of Health Sciences
Emogene Fox, Chair

Programs of study:

- ◆ BS, Addiction Studies (options: Prevention, Treatment)
- ◆ BS, Health Education
- ◆ BS, Health Sciences
- ◆ BS, Medical Laboratory Sciences
- ◆ BS, Nuclear Medicine Technology
- ◆ BS, Radiography
- ◆ BPS, Professional Studies (Health and Safety)
- ◆ MS, Health Promotion

School of Nursing
Susan Gatto, Director

Programs of study:

- ◆ BSN, Nursing (options: Pre-Licensure; RN–BSN degree completion)
- ◆ MSN, Nursing (MSN options: Clinical Nurse Leader, Nurse Educator with Clinical Specialty)
- ◆ PMCs: Clinical Nurse Leader, Nurse Educator with Clinical Specialty, Family Nurse Practitioner
- ◆ DNP, Nursing (options: BSN-DNP [FNP], Post-Master's DNP)

Department of Occupational Therapy
Jimmy Ishee, Acting Chair

Program of study:

- ◆ OTD, Occupational Therapy

Department of Psychology & Counseling
Art Gillaspay, Chair

Programs of study:

- ◆ BS, Psychology
- ◆ MS, Mental Health Counseling
- ◆ EdS, School Psychology
- ◆ PhD, Psychology (options: Counseling Psychology, School Psychology)

Department of Family & Consumer Sciences
Nina Roofe, Chair

Programs of study:

- ◆ BS, Dietetics
- ◆ BS, Community Nutrition
- ◆ BS, Nutrition Science
- ◆ BA/BS, Interior Design
- ◆ BS, Family & Consumer Sciences
- ◆ BSE, Family & Consumer Sciences
- ◆ Post-bacc Dietetics Internship
- ◆ MS, Family & Consumer Sciences
- ◆ MS, Nutrition

Department of Exercise & Sport Science
Steve Tucker, Chair

Programs of study:

- ◆ BSE, Kinesiology & Physical Education (PETE)
- ◆ BS, Exercise Science (options: Clinical Exercise Science, Pre-Athletic Training)
- ◆ MS, Athletic Training
- ◆ MS, Exercise Science
- ◆ MA, Sport Management

Department of Military Science & Leadership
MAJ Joshua Powers, Chair

Program of study:

- ◆ Minor in Military Science

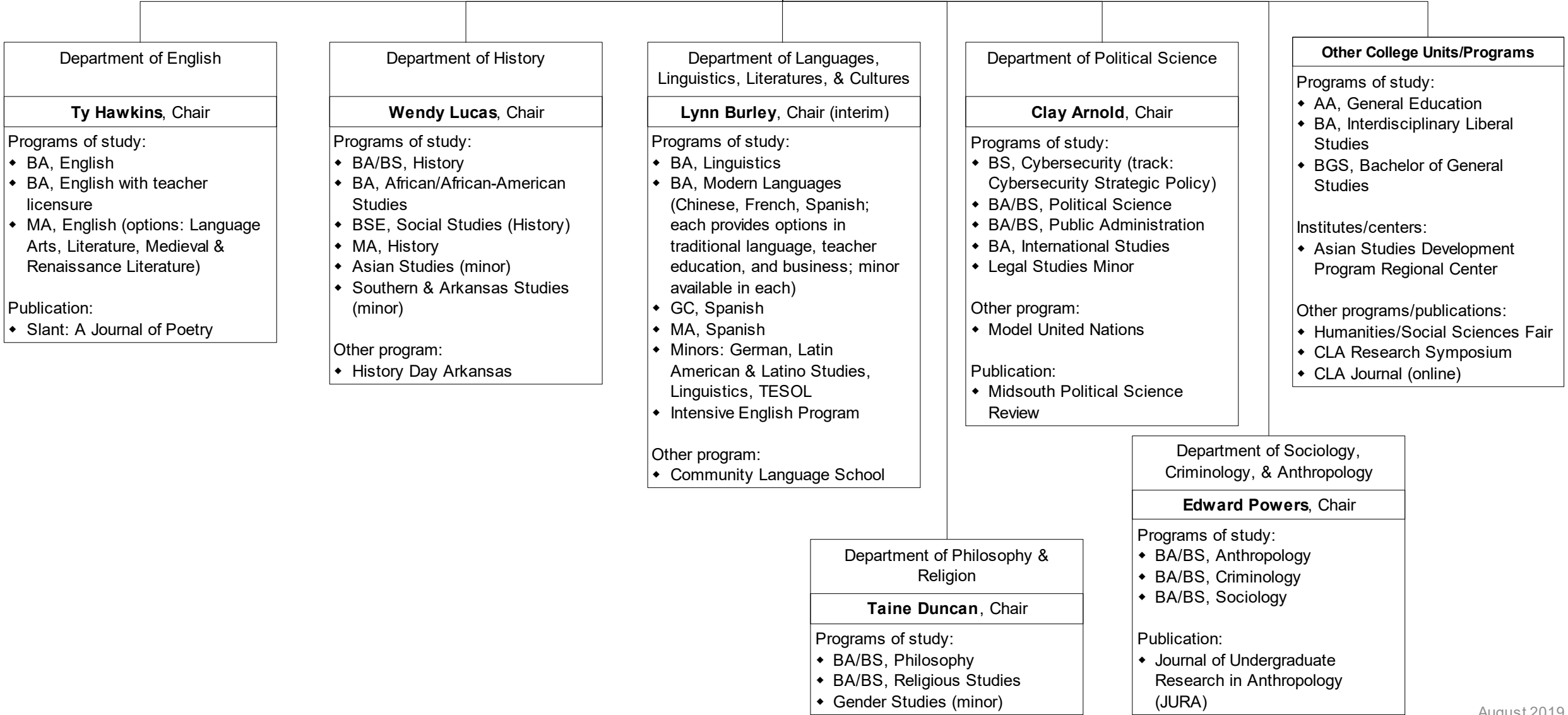
Department of Physical Therapy
Nancy Reese, Chair

Programs of study:

- ◆ DPT, Physical Therapy
- ◆ PhD, Physical Therapy
- ◆ Residency in Pediatric Physical Therapy

College of Liberal Arts
Dean
Tom Williams

Associate Dean
Peter Mehl



College of Natural Sciences & Mathematics
 Dean
Stephen Addison

Associate Dean
Ginny Adams

Department of Biology

Brent Hill, Chair

Programs of study:

- ◆ BS, Biology
- ◆ BS, Environmental Science (option: Biology)
- ◆ MS, Biology

Other facilities:

- ◆ Microscope facility
- ◆ Jewel Moore Nature Reserve

Department of Chemistry

Pat Desrochers, Chair

Programs of study:

- ◆ BS, Chemistry (options: ACS Certified, Standard; ACS Certified, Bio-chemistry; non-ACS Certified)
- ◆ BS, Environmental Science (option: Chemistry)

Department of Computer Science

Emre Celebi, Chair

Programs of study:

- ◆ BS, Computer Engineering
- ◆ BS, Computer Science
- ◆ BS, Cybersecurity (track: Cyberphysical Security)
- ◆ MS, Computer Science

Department of Mathematics

Ramesh Garimella, Chair

Programs of study:

- ◆ BA/BS, Mathematics (options: pure, applied, math education)
- ◆ MA, Mathematics Education
- ◆ MS, Applied Mathematics

Department of Physics & Astronomy

Carl Frederickson, Chair

Programs of study:

- ◆ BS, Engineering Physics
- ◆ BS, Physics (options: Physics, Biological Physics, Chemical Physics, Mathematical Physics, Physical Science)
- ◆ BS, General Science

Other facilities:

- ◆ Observatory
- ◆ Planetarium

Department of Geography

Stephen O'Connell, Chair

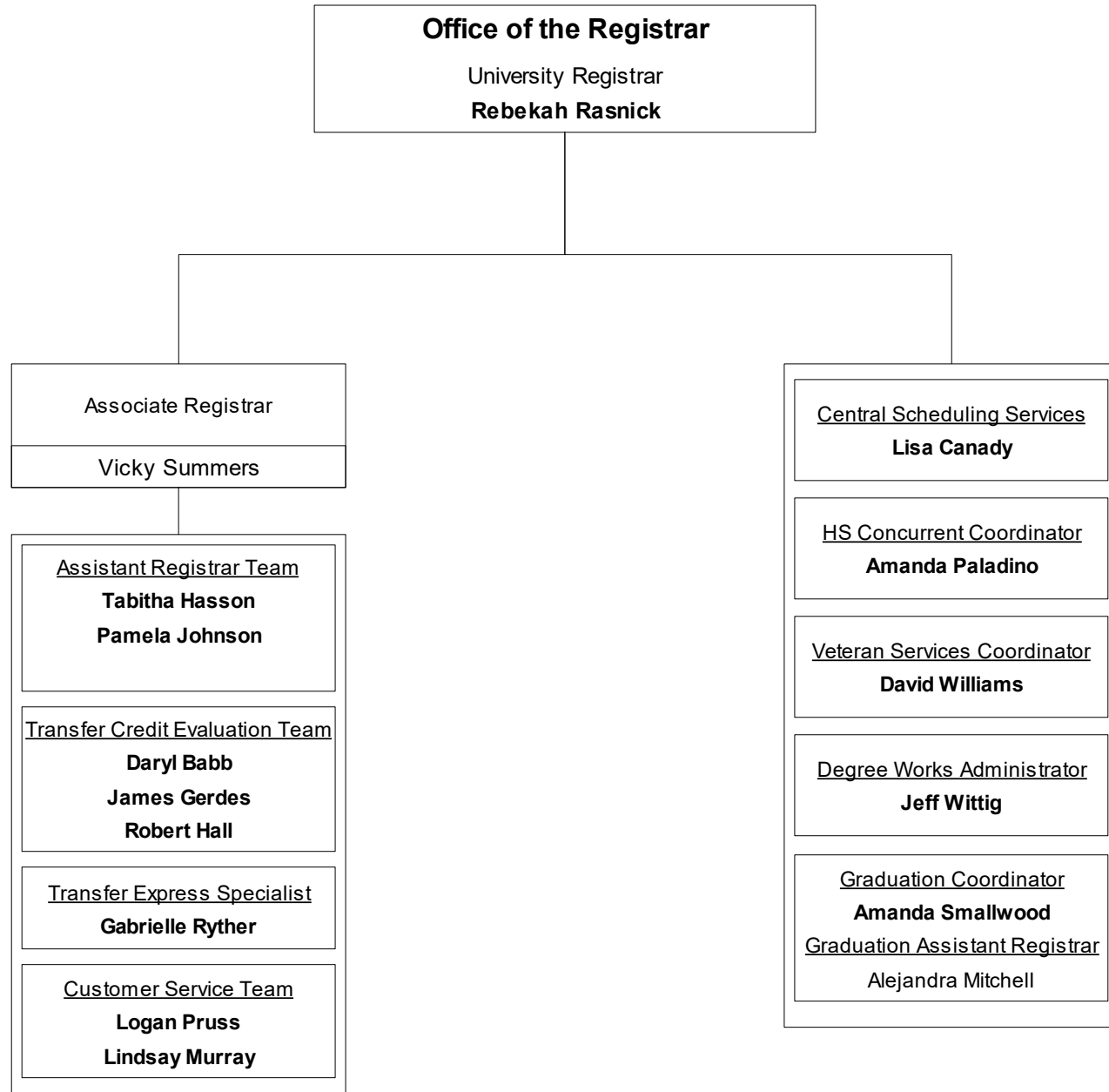
Programs of study:

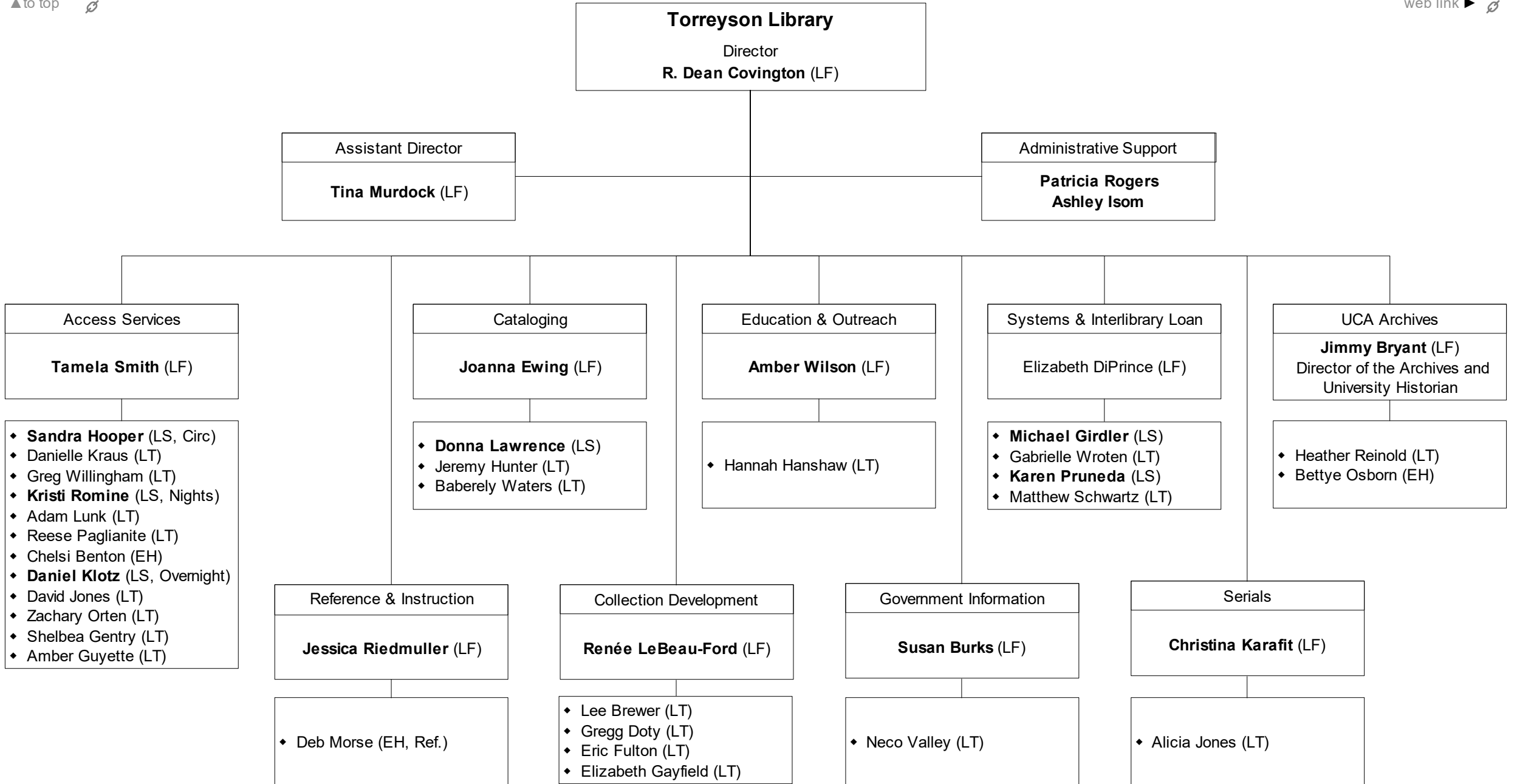
- ◆ BA/BS, Geography (option: Geospatial Technology)
- ◆ BS, Environmental Science (option: Planning & Administration)
- ◆ GC, Geographic Information Systems
- ◆ MGIS, Geographic Information Systems

Special STEM Initiatives

UCA Institute for STEM Professional Development & Education Research

UCA STEMteach





Legend:
 EH = Extra Help
 LF = Library Faculty
 LS = Library Supervisor
 LT = Library Technician

