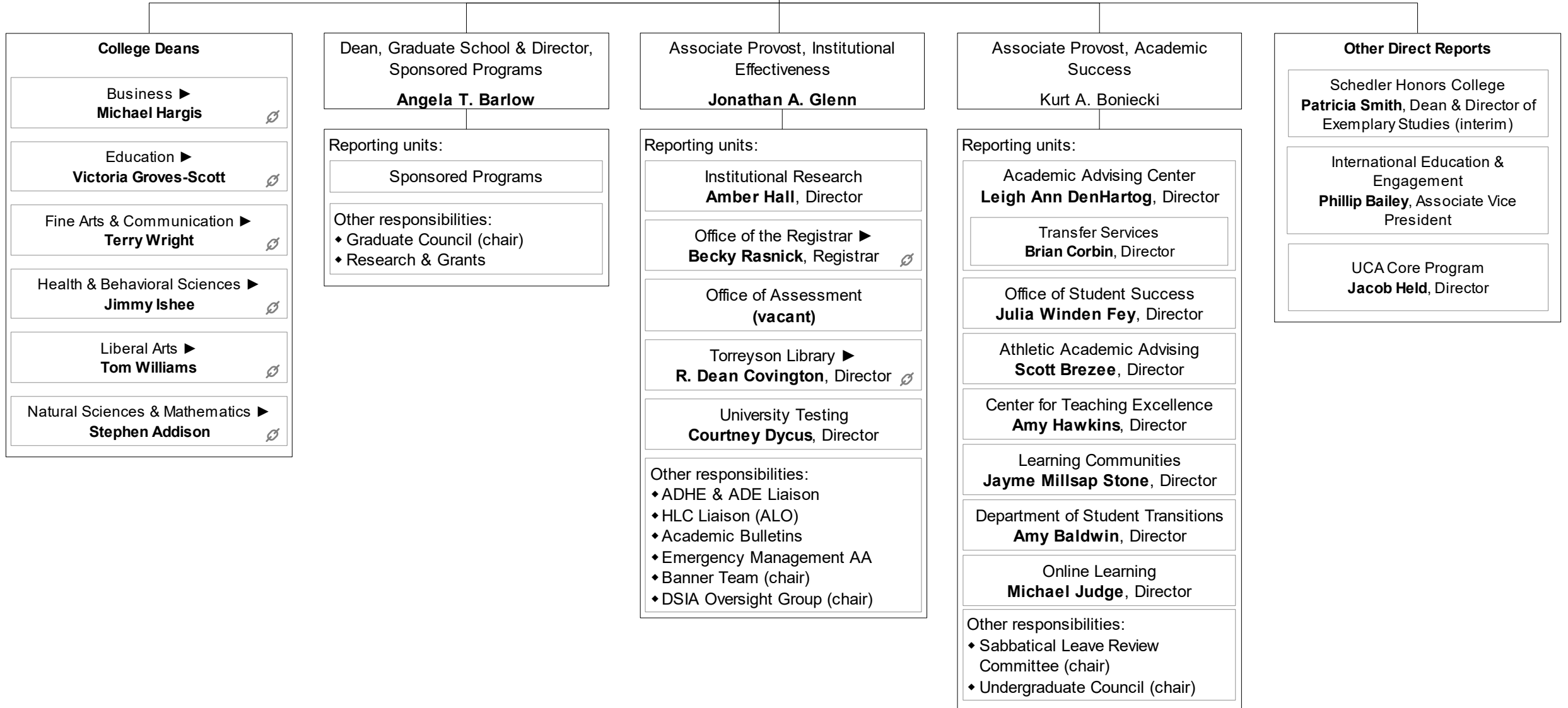
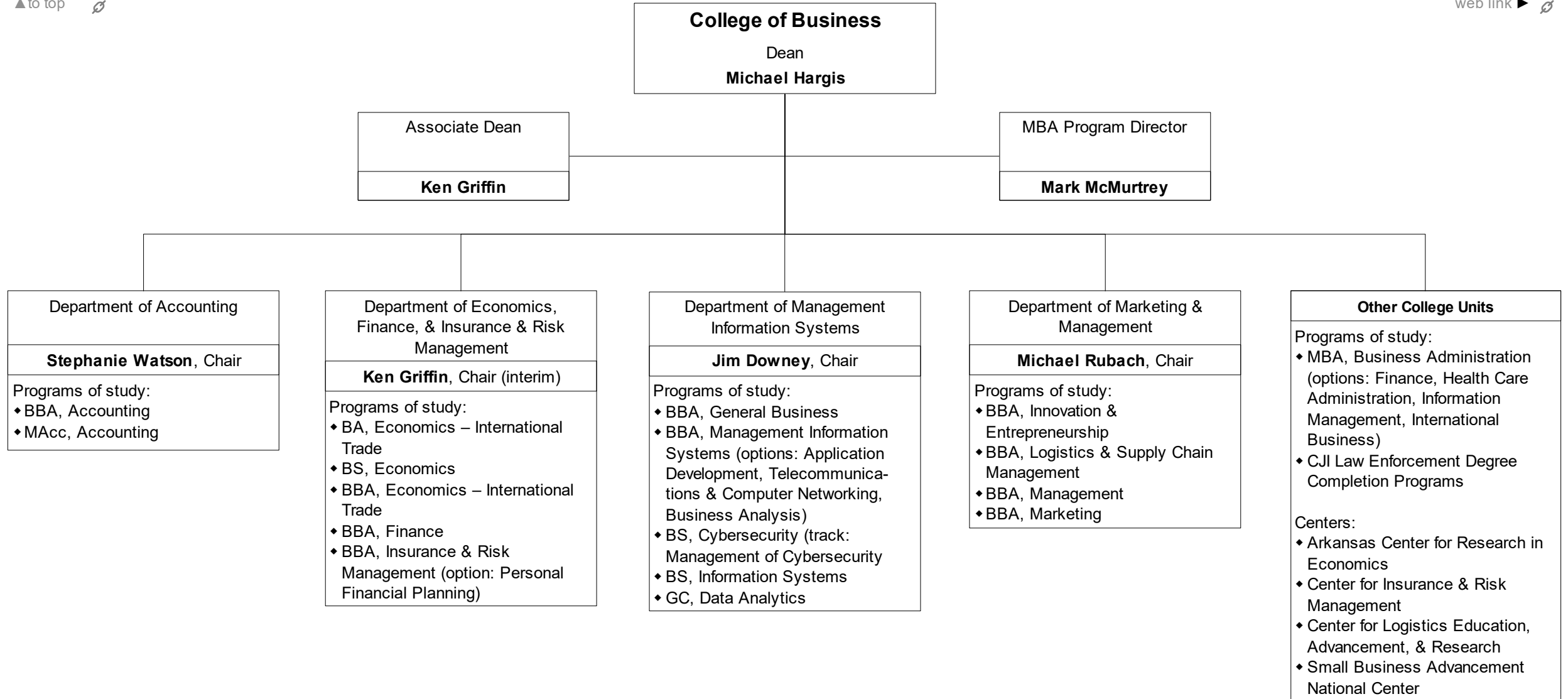
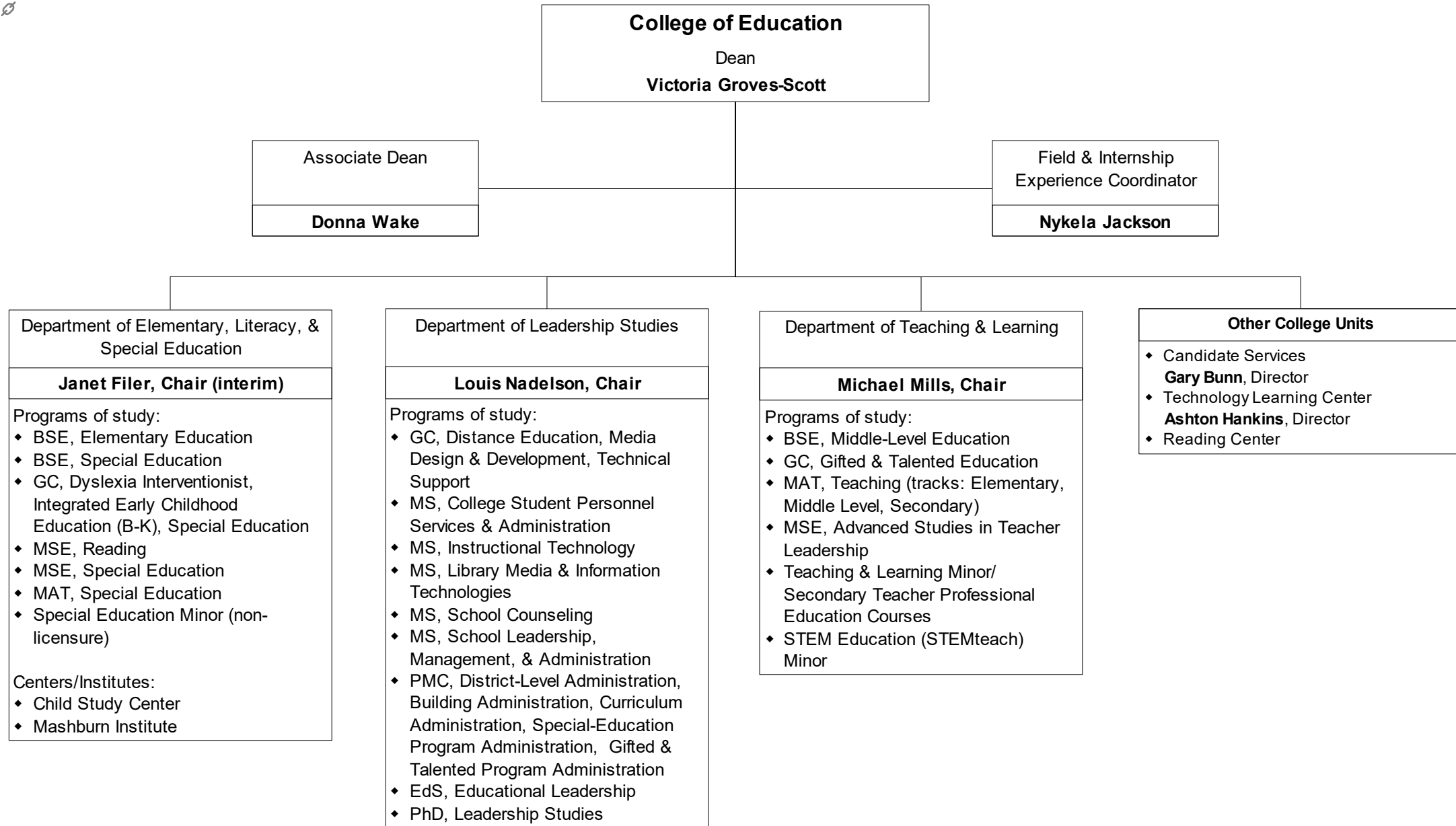
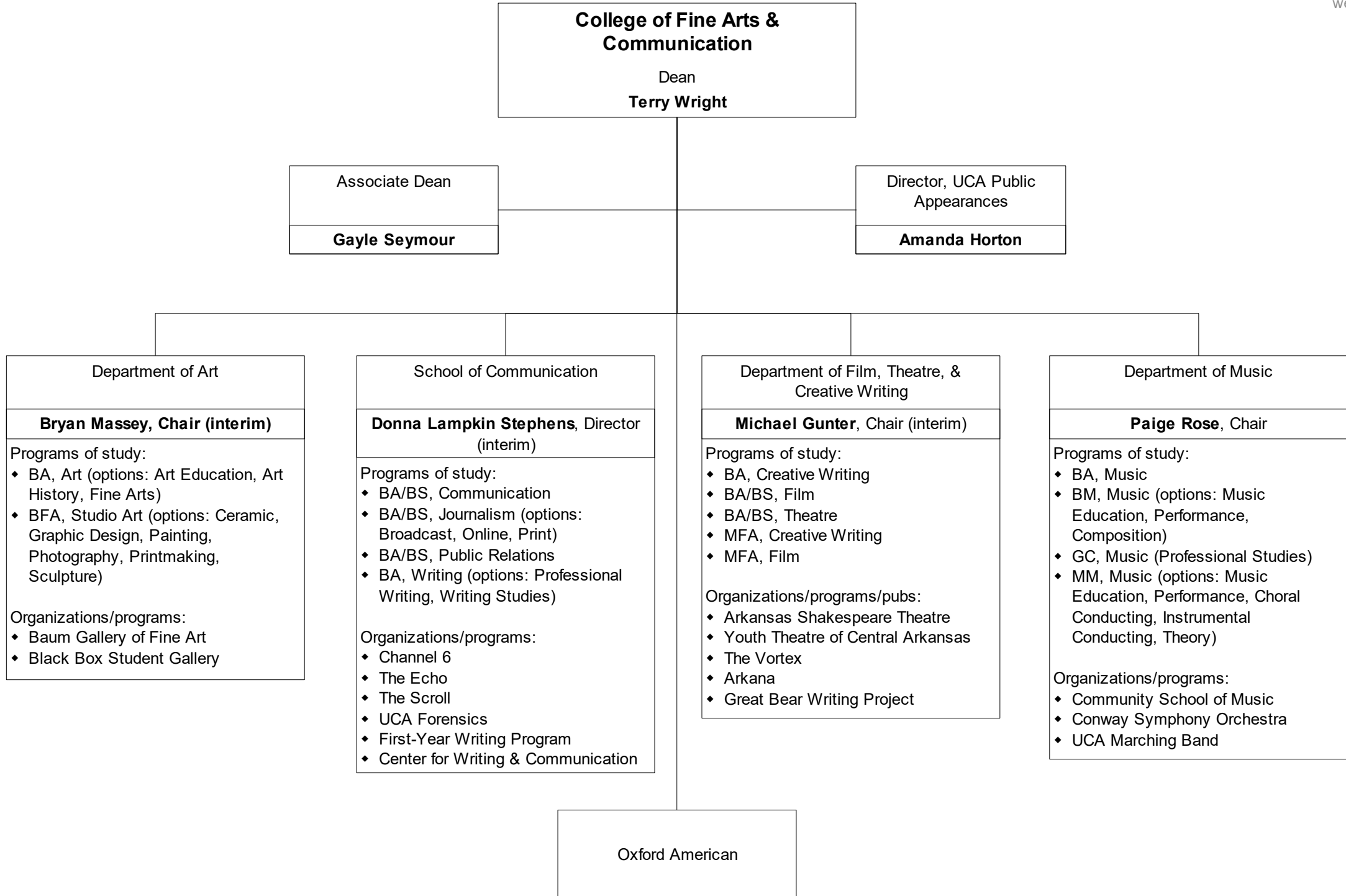


Division of Academic Affairs
Provost and Executive Vice President
Patricia S. Poulter









College of Health & Behavioral Sciences
Dean
Jimmy Ishee

Associate Dean
Jacquie Rainey

Department of Communication Sciences & Disorders

Dee Lance, Chair

Programs of study:

- ◆ BS, Communication Sciences & Disorders
- ◆ MS, Communication Sciences & Disorders
- ◆ PhD, Communication Sciences & Disorders (consortium with UALR, UAMS)

Department of Health Sciences

Emogene Fox, Chair

Programs of study:

- ◆ BS, Addiction Studies (options: Prevention, Treatment)
- ◆ BS, Health Education
- ◆ BS, Health Sciences
- ◆ BS, Medical Laboratory Sciences
- ◆ BS, Nuclear Medicine Technology
- ◆ BS, Radiography
- ◆ BPS, Professional Studies (Health and Safety)
- ◆ MS, Health Sciences

School of Nursing

Susan Gatto, Director

Programs of study:

- ◆ BSN, Nursing (options: Pre-Licensure; LPN/LPTN-BSN, RN-BSN degree completion)
- ◆ MSN, Nursing (MSN options: Clinical Nurse Leader, Nurse Educator with Clinical Specialty; PMCs: Clinical Nurse Leader, Nurse Educator with Clinical Specialty, Adult/Gerontology Nurse Practitioner, Family Nurse Practitioner)
- ◆ DNP, Nursing

Department of Occupational Therapy

Jennifer A. Moore, Chair

Program of study:

- ◆ OTD, Occupational Therapy

Department of Psychology & Counseling

Art Gillaspay, Chair

Programs of study:

- ◆ BS, Psychology
- ◆ MS, Mental Health Counseling
- ◆ EdS, School Psychology (pending final approval)
- ◆ PhD, Psychology (options: Counseling Psychology, School Psychology)

Department of Family & Consumer Sciences

Nina Rooft, Chair

Programs of study:

- ◆ BA/BS, Interior Design
- ◆ BS, Family & Consumer Sciences
- ◆ BS, Nutrition
- ◆ BSE, Family & Consumer Sciences
- ◆ Post-bacc Dietetics Internship
- ◆ MS, Family & Consumer Sciences
- ◆ MS, Nutrition

Department of Exercise & Sport Science

Steve Tucker, Chair

Programs of study:

- ◆ BSE, Kinesiology & Physical Education (PETE)
- ◆ BS, Exercise Science (options: Clinical Exercise Science, Pre-Athletic Training)
- ◆ MS, Athletic Training
- ◆ MS, Exercise Science
- ◆ MA, Sport Management

Department of Military Science & Leadership

MAJ Joshua Powers, Chair

Program of study:

- ◆ Minor in Military Science

Department of Physical Therapy

Nancy Reese, Chair

Programs of study:

- ◆ BS, Health Science – Physical Therapy
- ◆ DPT, Physical Therapy
- ◆ PhD, Physical Therapy
- ◆ Residency in Pediatric Physical Therapy

College of Liberal Arts
Dean
Tom Williams

Associate Dean
Peter Mehl

Department of English

Conrad Shumaker, Chair (interim)

Programs of study:

- ◆ BA, English
- ◆ BA, English with teacher licensure
- ◆ MA, English (options: Language Arts, Literature, Medieval & Renaissance Literature)

Publication:

- ◆ Slant: A Journal of Poetry

Department of History

Wendy Lucas, Chair

Programs of study:

- ◆ BA/BS, History
- ◆ BA, African/African-American Studies
- ◆ BSE, Social Studies (History)
- ◆ MA, History
- ◆ Asian Studies (minor)
- ◆ Southern & Arkansas Studies (minor)

Other program:

- ◆ History Day Arkansas

Department of Languages, Linguistics, Literatures, & Cultures

Lynn Burley, Chair (interim)

Programs of study:

- ◆ BA, Linguistics
- ◆ BA, Modern Languages (Chinese, French, Spanish; each provides options in traditional language, teacher education, and business; minor available in each)
- ◆ GC, Spanish
- ◆ MA, Spanish
- ◆ German (minor)
- ◆ Latin American & Latino Studies (minor)
- ◆ Intensive English Program
- ◆ TESOL (minor)

Other program:

- ◆ Community Language School

Department of Political Science

Clay Arnold, Chair

Programs of study:

- ◆ BS, Cybersecurity (track: Cybersecurity Strategic Policy)
- ◆ BA/BS, Political Science
- ◆ BA/BS, Public Administration
- ◆ BA, International Studies

Other program:

- ◆ Model United Nations

Publication:

- ◆ Midsouth Political Science Review

Other College Units/Programs

Programs of study:

- ◆ AA, General Education
- ◆ BA, Interdisciplinary Liberal Studies
- ◆ BGS, Bachelor of General Studies

Institutes/centers:

- ◆ Asian Studies Regional Center

Other programs:

- ◆ Humanities & Social Sciences Fair

Department of Philosophy & Religion

Charles Harvey, Chair

Programs of study:

- ◆ BA/BS, Philosophy
- ◆ BA/BS, Religious Studies
- ◆ Gender Studies (minor)

Department of Sociology, Criminology, & Anthropology

Edward Powers, Chair

Programs of study:

- ◆ BA/BS, Anthropology
- ◆ BA/BS, Criminology
- ◆ BA/BS, Sociology

Publication:

- ◆ Journal of Undergraduate Research in Anthropology (JURA)

College of Natural Sciences & Mathematics
 Dean
Stephen Addison

Associate Dean
Ginny Adams

Department of Biology

Brent Hill, Chair

Programs of study:

- ◆ BS, Biology
- ◆ BS, Environmental Science (option: Biology)
- ◆ MS, Biology

Other facilities:

- ◆ Microscope facility
- ◆ Jewel Moore Nature Reserve

Department of Chemistry

Pat Desrochers, Chair

Programs of study:

- ◆ BS, Chemistry (options: ACS Certified, Standard; ACS Certified, Bio-chemistry; non-ACS Certified)
- ◆ BS, Environmental Science (option: Chemistry)

Department of Computer Science

Emre Celebi, Chair

Programs of study:

- ◆ BS, Computer Engineering
- ◆ BS, Computer Science
- ◆ BS, Cybersecurity (track: Cyberphysical Security)
- ◆ MS, Applied Computing

Department of Mathematics

Ramesh Garimella, Chair

Programs of study:

- ◆ BA/BS, Mathematics (options: pure, applied, math education)
- ◆ MA, Mathematics Education
- ◆ MS, Applied Mathematics

Department of Physics & Astronomy

Carl Frederickson, Chair

Programs of study:

- ◆ BS, Physics (options: Physics, Biological Physics, Chemical Physics, Mathematical Physics, Physical Science, Engineering Physics)
- ◆ BS, General Science

Other facilities:

- ◆ Observatory
- ◆ Planetarium

Department of Geography

Stephen O'Connell, Chair

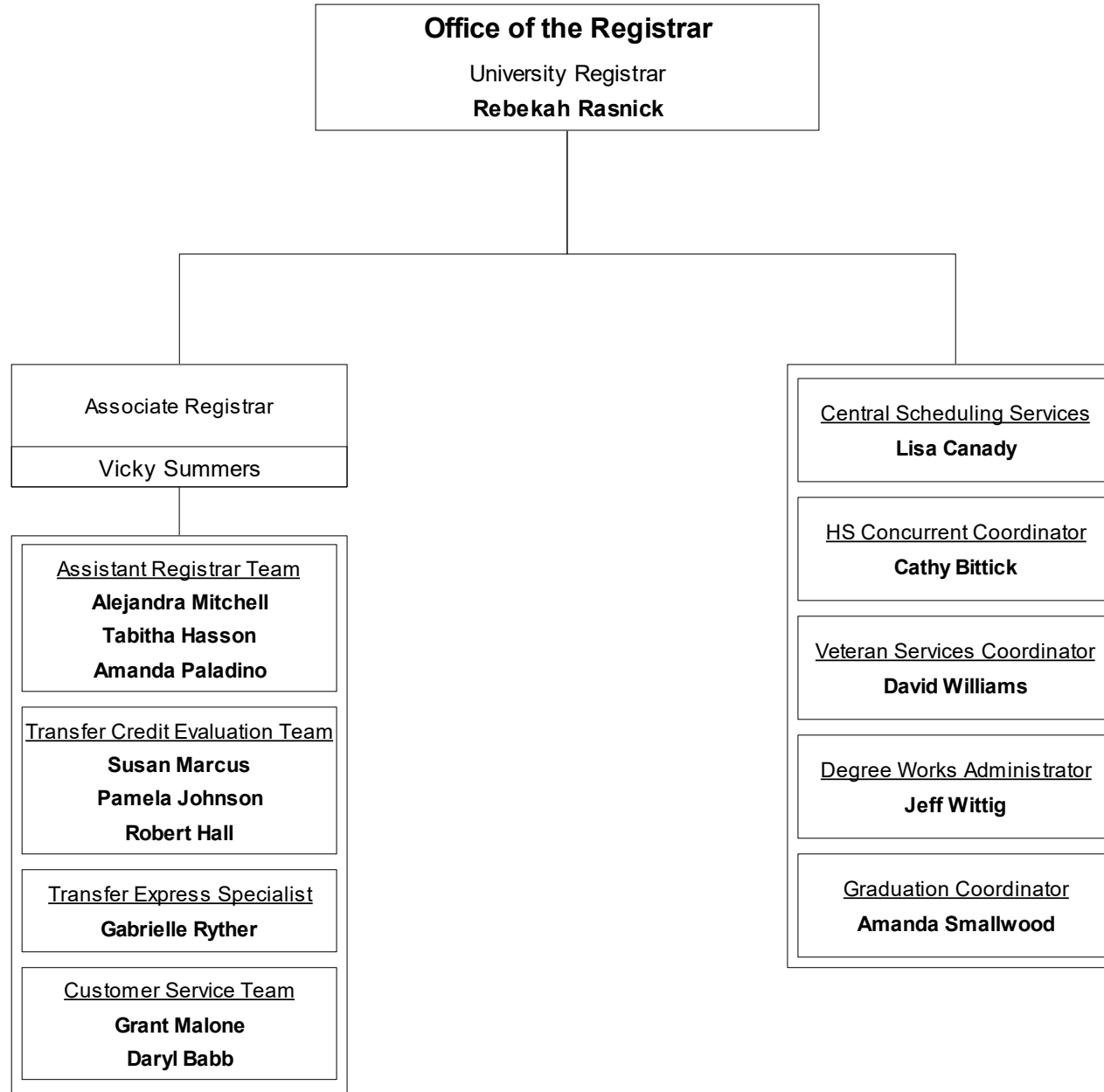
Programs of study:

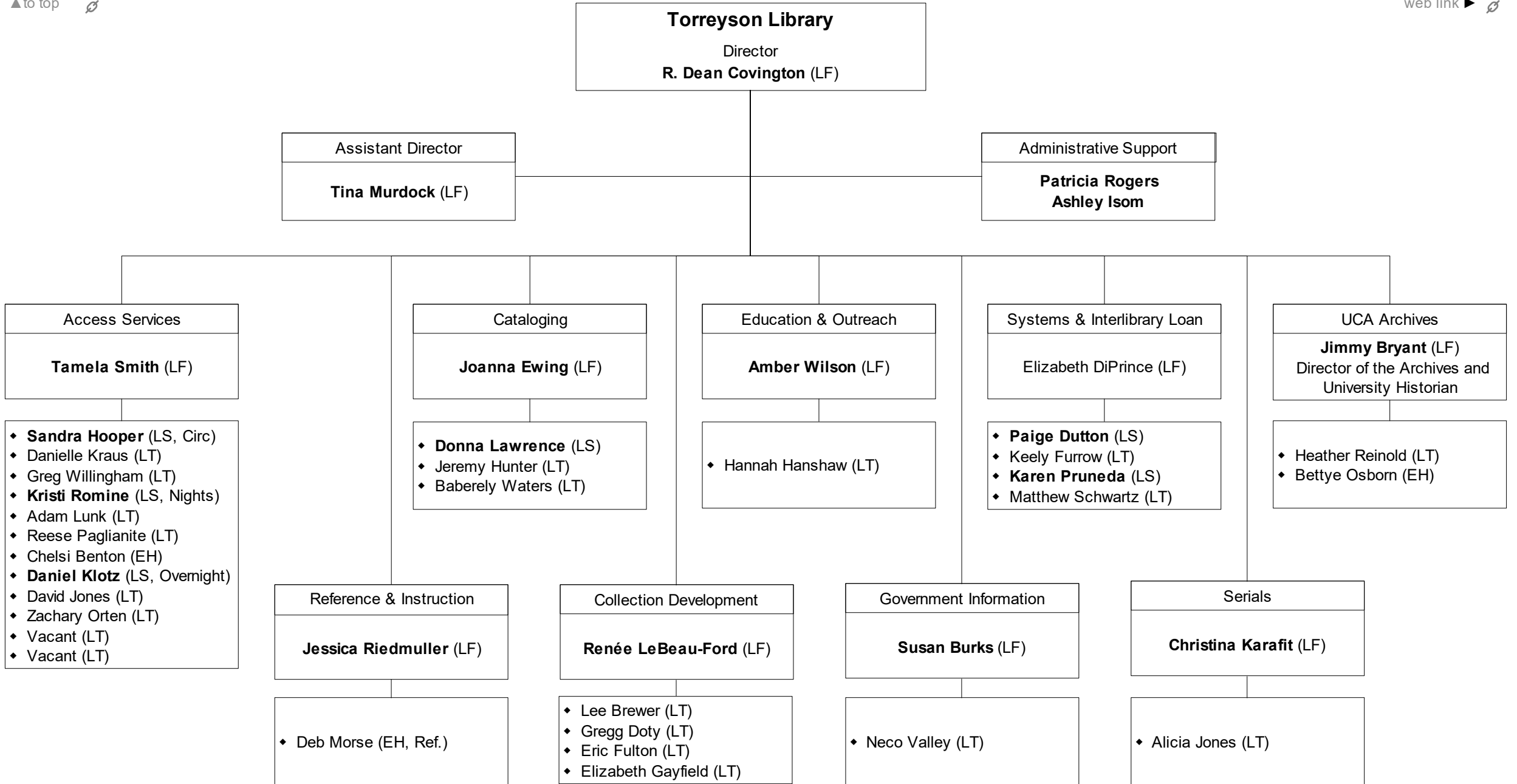
- ◆ BA/BS, Geography (option: Geospatial Technology)
- ◆ BS, Environmental Science (option: Planning & Administration)
- ◆ GC, Geographic Information Systems
- ◆ MGIS, Geographic Information Systems

Special STEM Initiatives

UCA Institute for STEM Professional Development & Education Research

UCA STEMteach





Legend:
 EH = Extra Help
 LF = Library Faculty
 LS = Library Supervisor
 LT = Library Technician