



University of Central Arkansas

FY13 Budget Prep Book

University of Central Arkansas

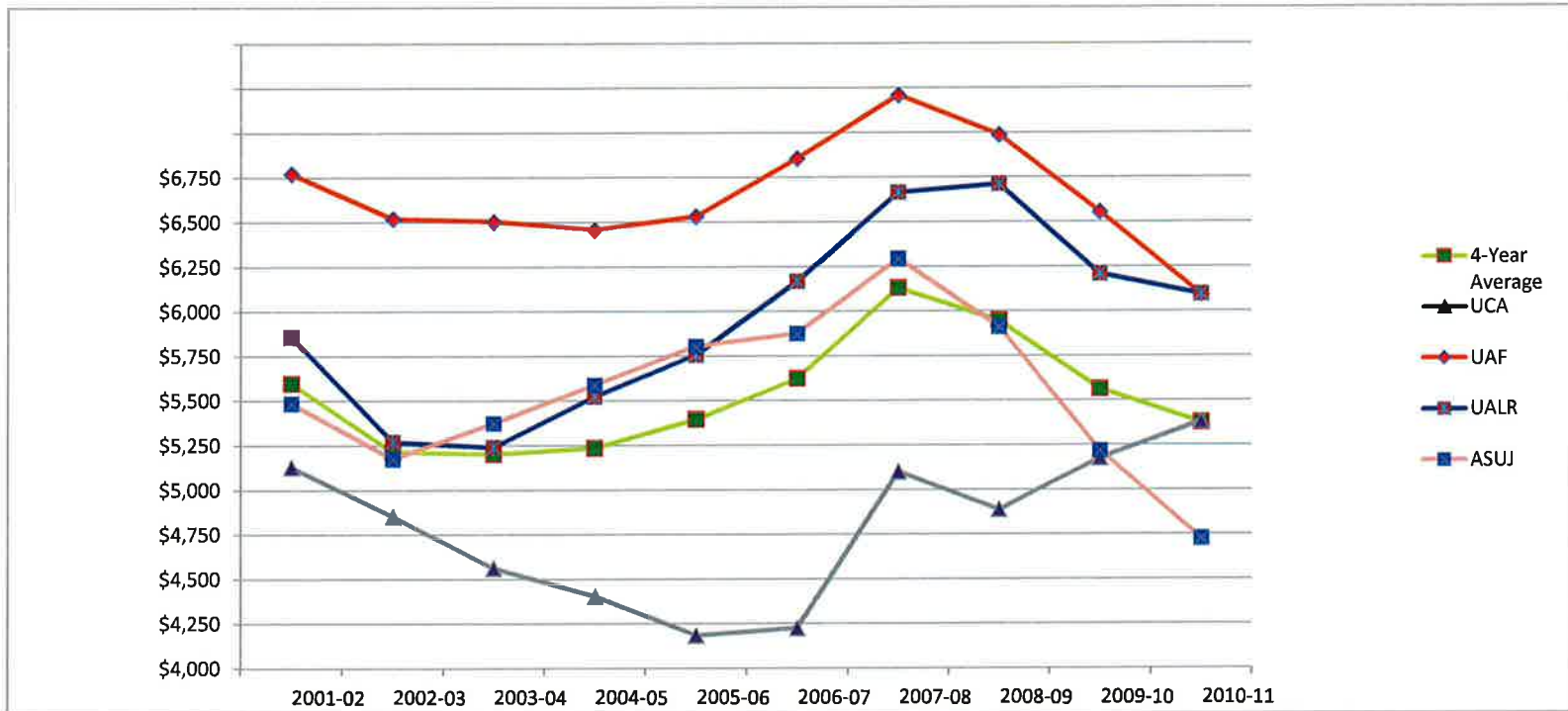
Table of Contents

Comparative – Arkansas 4-Year Public University State Funding per FTE	1
UCA – State Funding, 2001 – 2011	2
Comparative – Arkansas 4-Year Public University FTE & Enrollment	3
UCA – Fall Enrollment, 2001 – 2011	4
Comparative – Tuition/Fees for Arkansas 4-Year Public Universities	5
UCA – Tuition/Fees, 00/01 – 11/12	6
UCA Room & Board Rates per semester, 02-12	7
Operating Summary, FY10-FY12	8
Operating Revenues, 06/07 – 11/12	9
Operating Expenses, 06/07 – 11/12	10
Auxiliary Revenues, 06/07 – 11/12	11
Auxiliary Expenses, 06/07 – 11/12	12
Debt Service	13
Tuition Increases	14
Current UCA Employees	15
COLA Increase Summary	16

University of Central Arkansas

ARKANSAS FOUR-YEAR PUBLIC UNIVERSITY STATE FUNDING PER FTE, 2001-02 to 2010-11

Institution	2001-02	2002-03	2003-04	2004-05	2005-06	2006-07	2007-08	2008-09	2009-10	2010-11
Arkansas State University	\$5,486	\$ 5,175	\$ 5,374	\$ 5,588	\$ 5,804	\$ 5,876	\$ 6,294	\$ 5,912	\$ 5,218	\$ 4,726
Arkansas Tech University	\$3,920	\$ 3,662	\$ 3,568	\$ 3,587	\$ 4,162	\$ 4,315	\$ 4,897	\$ 4,869	\$ 4,247	\$ 4,034
Henderson State University	\$5,269	\$ 4,953	\$ 5,210	\$ 5,303	\$ 5,560	\$ 5,838	\$ 5,982	\$ 5,966	\$ 5,868	\$ 5,713
Southern Arkansas University	\$4,500	\$ 4,390	\$ 4,972	\$ 5,024	\$ 5,191	\$ 5,513	\$ 5,825	\$ 5,904	\$ 5,477	\$ 5,348
University of Arkansas-Fayetteville	\$6,771	\$ 6,520	\$ 6,504	\$ 6,458	\$ 6,532	\$ 6,855	\$ 7,210	\$ 6,988	\$ 6,554	\$ 6,092
University of Arkansas-Fort Smith	\$4,554	\$ 3,790	\$ 3,801	\$ 3,653	\$ 3,894	\$ 4,106	\$ 4,378	\$ 4,150	\$ 3,709	\$ 3,564
University of Arkansas at Little Rock	\$5,860	\$ 5,270	\$ 5,240	\$ 5,523	\$ 5,756	\$ 6,168	\$ 6,665	\$ 6,712	\$ 6,209	\$ 6,095
University of Arkansas at Monticello	\$5,320	\$ 4,651	\$ 4,305	\$ 4,440	\$ 4,722	\$ 4,950	\$ 6,192	\$ 6,077	\$ 5,641	\$ 5,740
University of Arkansas at Pine Bluff	\$6,706	\$ 6,298	\$ 6,495	\$ 6,534	\$ 7,145	\$ 7,947	\$ 7,932	\$ 7,191	\$ 6,582	\$ 7,503
University of Central Arkansas	\$5,128	\$ 4,852	\$ 4,562	\$ 4,407	\$ 4,185	\$ 4,225	\$ 5,100	\$ 4,888	\$ 5,177	\$ 5,381
TOTAL	\$5,598	\$ 5,214	\$ 5,202	\$ 5,236	\$ 5,396	\$ 5,624	\$ 6,131	\$ 5,948	\$ 5,564	\$ 5,377



**University of Central Arkansas
UCA State Funding**

Fiscal Year	2001	2002	2003	2004	2005	2006
General Revenue	37,969,302	38,088,262	36,776,278	38,429,852	39,168,657	41,013,816
Edu Excellence	3,521,032	3,604,678	3,622,778	3,693,991	3,882,996	4,190,343
Total RSA	41,490,334	41,692,940	40,399,056	42,123,843	43,051,653	45,204,159
General Improvement	467,006	777,628	59,453	463,772	130,993	1,010,721

Fiscal Year	2007	2008	2009	2010	2011
General Revenue	43,674,855	52,427,363	51,116,512	50,664,714	51,972,375
Edu Excellence	4,496,020	4,712,402	4,551,683	4,485,832	4,241,423
Total RSA	48,170,875	57,139,765	55,668,195	55,150,547	56,213,798
General Improvement	749,980	1,003,098	500,000	825,000	275,000

**Shaded lines represent funding provided by the Legislature over and above the regular appropriated monies.
Examples include funding for economic development, critical maintenance, renovations, equipment and instructional needs**

University of Central Arkansas

ARKANSAS FOUR-YEAR PUBLIC UNIVERSITY FTE, 2001-02 to 2010-11

Institution	2001-02	2002-03	2003-04	2004-05	2005-06	2006-07	2007-08	2008-09	2009-10	2010-11
Arkansas State University	9,064	9,131	9,154	9,002	9,044	9,431	9,382	10,019	11,121	12,495
Arkansas Tech University	5,324	5,520	6,110	6,203	6,387	6,563	6,281	6,325	7,112	7,642
Henderson State University	3,301	3,363	3,304	3,326	3,293	3,291	3,407	3,441	3,421	3,576
Southern Arkansas University	2,921	2,897	2,796	2,824	2,839	2,807	2,840	2,814	2,970	3,102
University of Arkansas-Fayetteville	14,487	14,588	14,997	15,390	15,950	16,162	16,749	17,299	18,095	19,852
University of Arkansas-Fort Smith	3,824	4,478	4,650	4,975	5,049	5,135	5,264	5,547	6,093	6,437
University of Arkansas at Little Rock	8,676	8,771	8,936	9,043	9,127	9,088	9,155	9,103	9,653	10,018
University of Arkansas at Monticello	2,143	2,284	2,661	2,640	2,605	2,644	2,243	2,301	2,423	2,428
University of Arkansas at Pine Bluff	3,041	3,058	3,072	3,172	2,993	2,799	2,916	3,257	3,471	3,104
University of Central Arkansas	8,130	8,326	9,233	9,768	10,802	11,401	11,203	11,389	10,653	10,446
TOTAL	60,911	62,416	64,913	66,343	68,089	69,321	69,440	71,495	75,012	79,100

Source: www.adhe.edu

ARKANSAS FOUR-YEAR PUBLIC FALL ENROLLMENT, FALL 2003 TO FALL 2010

Institution	2003	2004	2005	2006	2007	2008	2009	2010
Arkansas State University	10,573	10,508	10,414	10,949	11,130	11,490	12,156	13,415
Arkansas Tech University	6,249	6,483	6,842	7,038	7,476	7,492	8,814	9,815
Henderson State University	3,515	3,569	3,584	3,664	3,603	3,652	3,583	3,713
Southern Arkansas University	3,008	3,057	3,109	3,113	3,150	3,117	3,226	3,379
University of Arkansas-Fayetteville	16,405	17,269	17,821	17,926	18,648	19,194	19,849	21,405
University of Arkansas-Fort Smith	6,358	6,581	6,761	6,731	6,611	6,772	7,322	7,716
University of Arkansas at Little Rock	11,757	11,806	11,896	11,905	12,135	11,965	13,132	13,176
University of Arkansas at Monticello	2,875	2,942	2,959	3,179	3,187	3,302	3,479	3,638
University of Arkansas at Pine Bluff	3,251	3,303	3,231	3,128	3,200	3,525	3,792	3,428
University of Central Arkansas	9,515	10,068	11,375	12,329	12,619	12,974	11,781	11,444
TOTAL	73,506	75,586	77,992	79,962	81,759	83,483	87,134	91,129

Source: www.adhe.edu

University of Central Arkansas

Fall Enrollment

Headcount	2001	2002	2003	2004	2005	2006	2007	2008	2009	2010	2011
Full-time	7,404	7,542	8,479	8,902	9,713	10,203	9,815	9,893	9,261	8,980	8,783
Part-Time	1,082	1,004	1,033	1,165	1,629	1,678	2,141	1,995	1,840	1,918	2,001
Total*	8,486	8,546	9,512	10,067	11,342	11,881	11,956	11,888	11,101	10,898	10,784
Fall Full-time Equivalent (FTE)		7,930	8,820	9,306	10,291	10,728	10,403	10,350	9,763	9,506	9,447

* Excludes Concurrent Enrollment

Concurrent	0	7	4	2	33	449	663	1,086	680	546	379
Concurrent FTE	0	0	0	0	2	123	173	404	205	153	112

TOTAL ENROLLMENT (including concurrent)	8,486	8,553	9,516	10,069	11,375	12,330	12,619	12,974	11,781	11,444	11,163
--	-------	-------	-------	--------	--------	--------	--------	--------	--------	--------	--------

	2000-01	2001-02	2002-03	2003-04	2004-05	2005-06	2006-07	2007-08	2008-09	2009-10	2010-11
Annualized FTE**	8,027	8,130	8,326	9,233	9,768	10,802	11,401	11,203	11,389	10,653	10,446

** Includes Concurrent

University of Central Arkansas

Tuition & Fees for Arkansas Public 4-Year Universities

SOURCE: ADHE Fact Book 2011 & 18-1 Series

In-State, Full-Time UNDERGRADUATE								
Inst.	Annual Tuition & Fees					% Increase	% Increase	% Increase
	2007-08	2008-09	2009-10	2010-11	2011-12	2010-11 to 2011-12	2009-10 to 2011-12	2007-08 to 2011-12
ASUJ	\$ 6,010	\$ 6,370	\$ 6,370	\$ 6,640	\$ 6,934	4.43%	8.85%	15.37%
ATU	\$ 5,120	\$ 5,430	\$ 5,610	\$ 5,908	\$ 6,258	5.92%	11.55%	22.23%
HSU	\$ 5,689	\$ 6,024	\$ 6,204	\$ 6,444	\$ 6,714	4.19%	8.22%	18.02%
SAUM	\$ 5,224	\$ 5,646	\$ 6,066	\$ 6,426	\$ 6,786	5.60%	11.87%	29.90%
UAF	\$ 6,038	\$ 6,399	\$ 6,459	\$ 6,767	\$ 7,173	6.00%	11.05%	18.80%
UAFS	\$ 4,060	\$ 4,410	\$ 4,600	\$ 4,918	\$ 5,267	7.10%	14.50%	29.73%
UALR	\$ 5,740	\$ 6,121	\$ 6,331	\$ 6,642	\$ 7,120	7.20%	12.46%	24.04%
UAM	\$ 4,300	\$ 4,600	\$ 4,750	\$ 4,990	\$ 5,290	6.01%	11.37%	23.02%
UAPB	\$ 4,499	\$ 4,676	\$ 4,796	\$ 5,033	\$ 5,330	5.90%	11.13%	18.47%
UCA	\$ 6,205	\$ 6,505	\$ 6,698	\$ 6,908	\$ 7,183	3.98%	7.24%	15.76%
Average	\$ 5,289	\$ 5,618	\$ 5,788	\$ 6,068	\$ 6,406	5.57%	10.66%	21.12%
Amount UCA is above UAF	\$ 167	\$ 106	\$ 239	\$ 141	\$ 10			
Amount UCA is above state average	\$ 917	\$ 887	\$ 910	\$ 840	\$ 778			

In-State, Full-Time GRADUATE								
Inst.	Annual Tuition & Fees					% Increase	% Increase	% Increase
	2007-08	2008-09	2009-10	2010-11	2011-12	2010-11 to 2011-12	2009-10 to 2011-12	2007-08 to 2011-12
ASUJ	\$ 5,830	\$ 6,190	\$ 6,190	\$ 6,430	\$ 6,709	4.34%	8.38%	15.08%
ATU	\$ 4,672	\$ 4,952	\$ 5,120	\$ 5,394	\$ 5,718	6.01%	11.68%	22.39%
HSU	\$ 5,555	\$ 5,899	\$ 6,067	\$ 6,307	\$ 6,547	3.81%	7.91%	17.86%
SAUM	\$ 5,040	\$ 5,426	\$ 5,834	\$ 6,170	\$ 6,530	5.83%	11.93%	29.56%
UAF	\$ 7,708	\$ 8,141	\$ 8,189	\$ 8,558	\$ 9,042	5.66%	10.42%	17.31%
UALR	\$ 6,086	\$ 6,480	\$ 6,691	\$ 7,012	\$ 7,512	7.13%	12.27%	23.43%
UAM	\$ 4,488	\$ 4,896	\$ 5,136	\$ 5,424	\$ 6,000	10.62%	16.82%	33.69%
UAMS	\$ 5,518	\$ 5,849	\$ 6,081	\$ 6,080	\$ 6,081	0.02%	0.00%	10.20%
UAPB	\$ 4,377	\$ 4,544	\$ 4,664	\$ 4,902	\$ 5,202	6.12%	11.54%	18.85%
UCA	\$ 5,943	\$ 6,183	\$ 6,361	\$ 6,529	\$ 6,777	3.80%	6.54%	14.03%
Average	\$ 5,522	\$ 5,856	\$ 6,033	\$ 6,281	\$ 6,612	5.27%	9.59%	19.74%
Amount UCA is under UAF	\$ (1,765)	\$ (1,958)	\$ (1,828)	\$ (2,029)	\$ (2,265)			
Amount UCA is above state average	\$ 421	\$ 327	\$ 328	\$ 248	\$ 165			

University of Central Arkansas

Tuition and Fees, 2000-2001 through 2011-2012

	2001 (12hrs)	2002(12hrs)	2003 (12hrs)	2004 (13 hrs)	2005 (14 hrs)	2006	2007	2008	2009	2010	2011	2012
Tuition (15 hrs)	1,173.00	1,530.00	1,656.00	1,885.00	2,030.00	2,250.00	2,347.50	2,415.00	2,550.00	2,602.50	2,617.50	2,693.25
annualized	2,346.00	3,060.00	3,312.00	3,770.00	4,060.00	4,500.00	4,695.00	4,830.00	5,100.00	5,205.00	5,235.00	5,386.50
Fees (15 hrs)	273.00	339.00	339.00	367.50	496.50	627.50	657.50	687.50	702.50	746.50	836.50	898.00
annualized	546.00	678.00	678.00	735.00	993.00	1,255.00	1,315.00	1,375.00	1,405.00	1,493.00	1,673.00	1,796.00
Total (15 hrs)	1,446.00	1,869.00	1,995.00	2,252.50	2,526.50	2,877.50	3,005.00	3,102.50	3,252.50	3,349.00	3,454.00	3,591.25
annualized	2,892.00	3,738.00	3,990.00	4,505.00	5,053.00	5,755.00	6,010.00	6,205.00	6,505.00	6,698.00	6,908.00	7,182.50

	2001 (12hrs)	2002(12hrs)	2003 (12hrs)	2004 (13 hrs)	2005 (14 hrs)	2006	2007	2008	2009	2010	2011	2012
General Tuition	98.00	127.50	138.00	145.00	145.00	150.00	156.50	161.00	170.00	173.50	174.50	179.55
Credit Hour Fees												
Athletic	10.00	11.50	11.50	11.50	11.50	11.50	11.50	12.00	13.00	14.00	17.00	17.00
Student Center/Recreation	4.00	4.00	4.00	4.00	4.00	4.00	4.00	4.00	4.00	4.00	4.00	4.25
Facilities	3.00	3.00	3.00	3.00	9.00	9.00	9.00	9.00	9.00	9.00	9.00	9.00
HPER	-	4.00	4.00	4.00	4.00	4.00	4.00	4.00	4.00	4.00	4.00	7.50
Fine/Performaing Arts	2.00	2.00	2.00	2.00	2.00	2.00	2.00	2.00	2.00	2.00	2.00	2.00
Cooperative Education	0.50	0.50	0.50	0.50	0.50	0.50	0.50	0.50	0.50	0.50	0.50	0.50
Technology	-	-	-	-	-	4.00	6.00	7.50	7.50	7.50	7.50	7.50
Library	-	-	-	-	-	-	-	-	-	-	3.00	3.00
Writing/Retention	-	-	-	-	-	-	-	-	-	-	-	0.35
Total Credit Hours Fees	19.50	25.00	25.00	25.00	31.00	35.00	37.00	39.00	40.00	41.00	47.00	51.10
Total Tuition & Credit Hour Fees	117.50	152.50	163.00	170.00	176.00	185.00	193.50	200.00	210.00	214.50	221.50	230.65
Semester Fees												
Activity Fee	20.00	20.00	20.00	13.50	13.50	13.50	13.50	13.50	13.50	15.50	15.50	15.50
SAB	-	-	-	8.00	8.00	8.00	8.00	8.00	8.00	8.00	8.00	8.00
AAGE	5.00	5.00	5.00	5.00	5.00	5.00	5.00	5.00	5.00	5.00	5.00	5.00
Publication	5.00	5.00	5.00	6.00	6.00	6.00	6.00	6.00	6.00	6.00	6.00	6.00
Radio Station	4.00	4.00	4.00	5.00	5.00	5.00	5.00	5.00	5.00	5.00	5.00	5.00
Access & Security	-	-	-	-	-	-	-	-	-	27.00	27.00	27.00
Health Service	5.00	5.00	5.00	5.00	25.00	65.00	65.00	65.00	65.00	65.00	65.00	65.00
Total Semester Fees	39.00	39.00	39.00	42.50	62.50	102.50	102.50	102.50	102.50	131.50	131.50	131.50
Grand Total of Tuition & All Fees	156.50	191.50	202.00	212.50	238.50	287.50	296.00	302.50	312.50	346.00	353.00	362.15

University of Central Arkansas

Room and Board Rates per Semester

Fiscal Year	2002	2003	2004	2005	2006	2007	2008	2009	2010	2011	2012
Board Rates											
19 Meal Plan/Full Access	715	775	837	860	900	930	960	1,010	1,050	1,085	1,120
Room Rates											
Hall double	930	1,025	1,056	1,100	1,190	1,230	1,340	1,360	1,390	1,430	1,470
Total Room & Board	1,645	1,800	1,893	1,960	2,090	2,160	2,300	2,370	2,440	2,515	2,590

University of Central Arkansas

OPERATING SUMMARY FOR FISCAL YEARS 2010, 2011 & 2012

	Actual 2009-10	Actual 2010-11	Budget 2011-12
1 Tuition & Fees	68,479,631	68,951,666	67,620,309
2 Appropriations	55,976,707	56,494,605	56,802,983
3 Sales & Services	393,034	352,025	57,185
4 Organized Activities	291,810	278,538	222,793
5 Grants & Contracts	208,117	192,903	115,000
6 Other Sources	919,836	1,111,977	1,093,421
7 Other E&G - Special Programs	1,129,713	1,192,923	-
8 Total E&G Revenue	127,398,848	128,574,638	125,911,691
9 Auxiliary Income	31,417,623	32,746,124	34,019,400
10 Total Income	158,816,471	161,320,761	159,931,091
11 Salaries & Wages	67,038,399	66,925,746	70,992,299
12 Benefits	17,918,349	19,378,408	20,434,170
13 M&O	24,861,966	27,978,356	30,410,326
14 Scholarships & Fee Waivers	23,083,996	21,541,518	22,340,645
15 Purchased Utilities	4,177,475	4,209,362	5,236,907
16 Debt Service	7,814,085	7,043,414	7,740,258
17 Transfers	5,078,187	9,538,721	2,776,486
18 Total Expenditures	149,972,457	156,615,525	159,931,091
19 Net Gain/(Loss)	8,844,014	4,705,237	-

University of Central Arkansas

Operating Revenues

REVENUE	Actual										Budget	
	2006-07		2007-08		2008-09		2009-10		2010-11		2011-12	
	\$	%	\$	%	\$	%	\$	%	\$	%	\$	%
State Appropriations	48,922,509	33.68%	57,838,973	37.14%	55,670,633	34.32%	55,976,707	35.25%	56,494,605	35.02%	56,802,983	35.52%
Tuition and Fees	58,795,535	40.48%	60,805,389	39.05%	71,323,538	43.97%	68,479,631	43.12%	68,951,666	42.74%	67,620,309	42.28%
Auxiliaries*	33,112,959	22.80%	33,141,483	21.28%	31,694,915	19.54%	31,417,623	19.78%	32,746,124	20.30%	34,019,400	21.27%
Other**	4,410,796	3.04%	3,929,071	2.52%	3,502,243	2.16%	2,942,510	1.85%	3,128,366	1.94%	1,488,399	0.93%
Total	145,241,799	100%	155,714,916	100%	162,191,329	100%	158,816,471	100%	161,320,761	100%	159,931,091	100%

* Includes Athletics, Housing, Food Service, Student Center, Farris Fields, HPER, Bookstore, Student Health Services, Post Office, Parking Facilities & Radio Station

**Includes Organized Activities, Sales and Services, Grants and Contracts, Investments, Fines, etc.

University of Central Arkansas

Operating Expenses

EXPENDITURES	Actual										Budget	
	2006-07		2007-08		2008-09		2009-10		2010-11		2011-12	
	\$	%	\$	%	\$	%	\$	%	\$	%	\$	%
Salaries and Fringes	79,075,770	53.74%	84,785,026	56.28%	87,231,408	56.68%	84,956,747	56.65%	86,304,154	55.11%	91,426,469	57.17%
Operational costs	36,130,728	24.56%	36,465,950	24.21%	32,600,129	21.18%	34,117,628	22.75%	41,726,439	26.64%	38,423,719	24.03%
Scholarships/Waivers	25,150,969	17.09%	21,940,800	14.57%	26,131,486	16.98%	23,083,996	15.39%	21,541,518	13.75%	22,340,645	13.97%
Debt Service	6,779,965	4.61%	7,447,320	4.94%	7,945,371	5.16%	7,814,085	5.21%	7,043,414	4.50%	7,740,258	4.84%
Total	147,137,432	100%	150,639,096	100%	153,908,394	100%	149,972,456	100%	156,615,525	100%	159,931,091	100%

Difference in FY12 Budget and FY11 Actual

Reimbursement of Salaries in FY11 with ARRA Funds	1,778,715
FY12 Faculty Replacement Salaries & Fringes	750,000
Salaries Savings due to unfilled or temporary vacant positions FY11	2,593,600
Total	5,122,315

*Reimbursement of Salaries in FY10 with ARRA Funds for \$1,778,715, also accounts for the difference between FY09 and FY10 in salaries & fringes.

University of Central Arkansas

Auxiliaries Revenues

REVENUE	Actual										Budget	
	2006-07		2007-08		2008-09		2009-10		2010-11		2011-12	
	\$	%	\$	%	\$	%	\$	%	\$	%	\$	%
Athletics	6,671,074	20.15%	6,960,245	21.00%	4,976,068	15.70%	5,087,567	16.19%	6,212,841	18.97%	6,425,000	18.89%
Student Housing	13,859,899	41.86%	13,896,797	41.93%	14,269,047	45.02%	14,161,900	45.08%	13,889,538	42.42%	13,800,444	40.57%
Food Service	6,996,343	21.13%	6,579,097	19.85%	7,073,753	22.32%	6,918,511	22.02%	7,038,882	21.50%	7,220,446	21.22%
Student Center	1,550,710	4.68%	1,519,604	4.59%	1,453,449	4.59%	1,277,718	4.07%	1,334,428	4.08%	1,508,760	4.43%
HPER	1,289,371	3.89%	1,243,066	3.75%	1,206,597	3.81%	1,141,969	3.63%	1,227,816	3.75%	2,037,000	5.99%
Farris Fields	151,754	0.46%	142,500	0.43%	142,990	0.45%	133,841	0.43%	143,358	0.44%	150,000	0.44%
Bookstore	307,235	0.93%	515,000	1.55%	369,532	1.17%	350,000	1.11%	350,144	1.07%	350,000	1.03%
Student Health	1,615,184	4.88%	1,598,689	4.82%	1,645,056	5.19%	1,587,031	5.05%	1,720,215	5.25%	1,678,500	4.93%
Post Office	125,381	0.38%	163,899	0.49%	59,842	0.19%	52,179	0.17%	54,720	0.17%	61,250	0.18%
Parking Facilities	502,977	1.52%	485,087	1.46%	498,579	1.57%	706,907	2.25%	774,181	2.36%	756,500	2.22%
Radio Station	43,031	0.13%	37,500	0.11%	-	0.00%	-	0.00%	-	0.00%	31,500	0.09%
Total Auxiliaries	33,112,959	100%	33,141,483	100%	31,694,915	100%	31,417,623	100%	32,746,124	100%	34,019,400	100%

University of Central Arkansas

Auxiliaries Expenses

EXPENDITURES	Actual											
	2006-07		2007-08		2008-09		2009-10		2010-11		2011-12	
	\$	%	\$	%	\$	%	\$	%	\$	%	\$	%
Athletics	6,671,074	21.57%	6,960,245	21.00%	4,976,068	17.83%	5,087,567	17.24%	6,193,137	20.37%	6,425,000	18.89%
Student Housing	12,992,874	42.01%	13,896,797	41.93%	12,170,411	43.61%	12,992,677	44.04%	13,866,617	45.62%	13,800,444	40.57%
Food Service	6,252,823	20.22%	6,579,097	19.85%	6,450,362	23.11%	7,963,416	26.99%	6,377,510	20.98%	7,220,446	21.22%
Student Center	1,282,789	4.15%	1,519,190	4.58%	1,182,963	4.24%	1,713,642	5.81%	1,529,091	5.03%	1,508,760	4.43%
HPER	1,213,415	3.92%	1,243,066	3.75%	1,010,774	3.62%	1,294,652	4.39%	862,887	2.84%	2,037,000	5.99%
Farris Fields	150,969	0.49%	151,926	0.46%	115,448	0.41%	140,620	0.48%	62,855	0.21%	150,000	0.44%
Bookstore	278,484	0.90%	515,000	1.55%	135,306	0.48%	507,948	1.72%	340,546	1.12%	350,000	1.03%
Student Health	1,393,441	4.51%	1,598,689	4.82%	1,399,857	5.02%	1,945,153	6.59%	1,249,869	4.11%	1,678,500	4.93%
Post Office	184,516	0.60%	185,814	0.56%	71,429	0.26%	106,974	0.36%	119,387	0.39%	61,250	0.18%
Parking Facilities	452,985	1.46%	436,555	1.32%	361,132	1.29%	826,852	2.80%	788,017	2.59%	756,500	2.22%
Radio Station	55,379	0.18%	55,105	0.17%	35,264	0.13%	63,089	0.21%	56,578	0.19%	31,500	0.09%
General Auxiliary	-	0.00%	-	0.00%	-	0.00%	(3,140,000)	-10.64%	(1,050,000)	-3.45%	-	0.00%
Total Auxiliaries	30,928,748	100%	33,141,483	100%	27,909,015	100%	29,502,590	100%	30,396,492	100%	34,019,400	100%

University of Central Arkansas

Schedule of Bonds and Capital Leases Payable

	Principal Outstanding as of 1/10/12	Payments to be made by 6/30/12	Principal Outstanding at 6/30/12	Source of Funding	Maturity Date
2004 Series B (IBM Project)	215,000.00	-	215,000.00	Student Fee Revenue	11/1/2014
2006 Series A (1996A Ref (Baridon 91 Ref))	3,490,000.00	265,000.00	3,225,000.00	Housing System Revenue	4/1/2021
2006 Series B (Ref 1996B(Ref Sci 85/74))	3,535,000.00	155,000.00	3,380,000.00	Student Tuition & Fees	4/1/2026
2006 Series C (1996C Athletic Stadium Ref)	3,535,000.00	155,000.00	3,380,000.00	Auxiliary Revenue	4/1/2026
2006 Series D (Student Health/Athletic Fac)	5,920,000.00	290,000.00	5,630,000.00	Auxiliary Fee Revenue	5/1/2026
2006 Series E (Intramurals & General)	3,125,000.00	155,000.00	2,970,000.00	Student Fee Revenue	5/1/2026
2006 Series F (2000 Retirement Ctr Ref)	7,080,000.00	230,000.00	6,850,000.00	Housing System Revenue	5/1/2030
2007 Series A (Capital Improvements-Ath)	1,860,000.00	-	1,860,000.00	Auxiliary Revenue	11/1/2037
2007 Series B (Capital Improvements-E &G)	14,915,000.00	-	14,915,000.00	Student Fee Revenue	11/1/2037
2007 Series C (Ref 1997A & 2004C)	18,795,000.00	-	18,795,000.00	Housing System Revenue	11/1/2034
2010 Series A (Ref 1997B & 2003B)	3,795,000.00	-	3,795,000.00	Auxiliary Revenue	9/1/2023
2010 Series B (Ref 1997C, 1998, 2003A, & 2004A)	14,735,000.00	-	14,735,000.00	Student Fee/Auxiliary Revenue	9/1/2033
2010 Series C (Bear Hall)	21,905,000.00	-	21,905,000.00	Housing Revenue	9/1/2040
Grand Total	102,905,000.00	1,250,000.00	101,655,000.00		

University of Central Arkansas

Tuition Increases

<u>Increase</u>	<u>Per Hour</u>	<u>Revenue</u>	
1.00%	181.35	484,475	\$ 1.80 Per Hour Increase
\$1.00	180.55	269,153	\$ 1.00 Per Hour Increase

University of Central Arkansas

Current UCA Employees

Full-Time Faculty	628
Classified Staff	515
Non-classified Staff	233
Total Full-Time	1,376
Part-Time Faculty	131
Part-Time Staff	113
Total Part-Time	244
Graduate Assistants	229
Student workers	724
Total Student Workers	953
Total 2,573	

As of 12-16-11

University of Central Arkansas

COLA Increase Summary

	Base Salaries	COLA	Salary Increase	Fringe Rate	Fringes	Total Salary & Fringes
E&G Total	58,739,188.00	1.00%	587,391.88	31.00%	182,091.48	769,483.36
Auxiliaries Total	5,325,982.00	1.00%	53,259.82	31.00%	16,510.54	69,770.36
Grand Total	64,065,170.00		640,651.70		198,602.03	839,253.73

	Base Salaries	COLA	Salary Increase	Fringe Rate	Fringes	Total Salary & Fringes
E&G Total	58,739,188.00	2.00%	1,174,783.76	31.00%	364,182.97	1,538,966.73
Auxiliaries Total	5,325,982.00	2.00%	106,519.64	31.00%	33,021.09	139,540.73
Grand Total	64,065,170.00		1,281,303.40		397,204.05	1,678,507.45

	Base Salaries	COLA	Salary Increase	Fringe Rate	Fringes	Total Salary & Fringes
E&G Total	58,739,188.00	2.50%	1,468,479.70	31.00%	455,228.71	1,923,708.41
Auxiliaries Total	5,325,982.00	2.50%	133,149.55	31.00%	41,276.36	174,425.91
Grand Total	64,065,170.00		1,601,629.25		496,505.07	2,098,134.32

	Base Salaries	COLA	Salary Increase	Fringe Rate	Fringes	Total Salary & Fringes
E&G Total	58,739,188.00	3.00%	1,762,175.64	31.00%	546,274.45	2,308,450.09
Auxiliaries Total	5,325,982.00	3.00%	159,779.46	31.00%	49,531.63	209,311.09
Grand Total	64,065,170.00		1,921,955.10		595,806.08	2,517,761.18

As of 10-11-2011