

## You Are Invited to Join the UCA Stream Team

### Why Join?

You'll work along-side mentors, Professors and experienced volunteers and gain a hands-on working knowledge of a variety of commonly used techniques employed to assess water quality and biological density and diversity.

The experience you gain as a member of the Stream Team could lead to Undergraduate and Graduate Research.

You'll help to preserve a valuable watershed and Campus resource.

You'll meet and collaborate with folks within a diverse group of folks with common goals and interests.



Next Sampling and Assessment Scheduled for  
April 15, 2013.



Come and check out the Stream Team in action, get your feet wet, make and contribute to a more ecologically sustainable campus and have fun doing it!



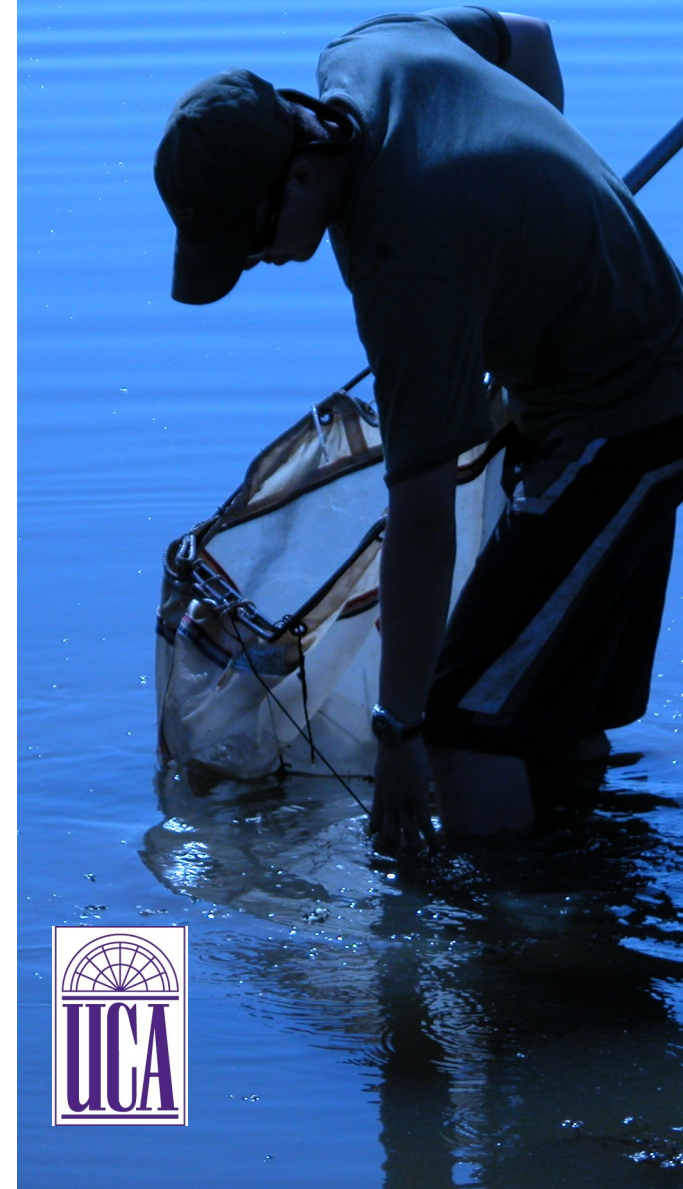
University of  
Central Arkansas™

COLLEGE OF  
NATURAL SCIENCES  
& MATHEMATICS

UCA Stream Team  
019 Lewis Science Center  
sentrekin@uca.edu

<http://uca.edu/biology/jewel-moore-nature-reserve/>

# University of Central Arkansas™ Stream Team



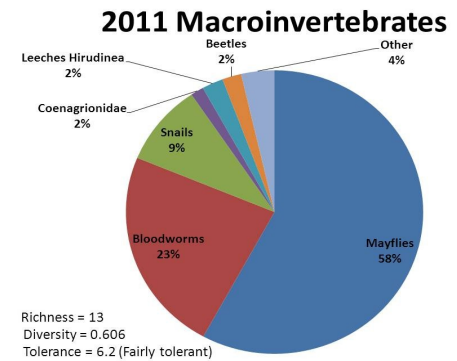
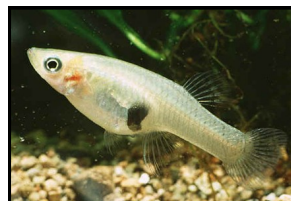




## 2012 Sampling Sites on Stone Dam Creek

Examples of the sampling and analysis performed at these sites include:

- **Chemical** analysis to determine dissolved oxygen, nitrate and orthophosphate levels.
- **Biological** sampling of fish and invertebrates to determine density and diversity.
- Assessment of the **Physical** Characteristics such as depth and streambed composition.



## Stone Dam Creek

Stone Dam Creek is an important watershed that collects runoff from the City of Conway that eventually drains into Lake Conway.

The creek and adjacent riparian zones are important habitat for variety of species.

The Stream Team performs analysis to assess the overall stream quality of Stone Dam and reports its findings to the AGFC as part of a nationwide program promoting the preservation and restoration of watersheds.

**Restoration of the Creek and riparian zones is also a long-term priority of the Stream Team.**

